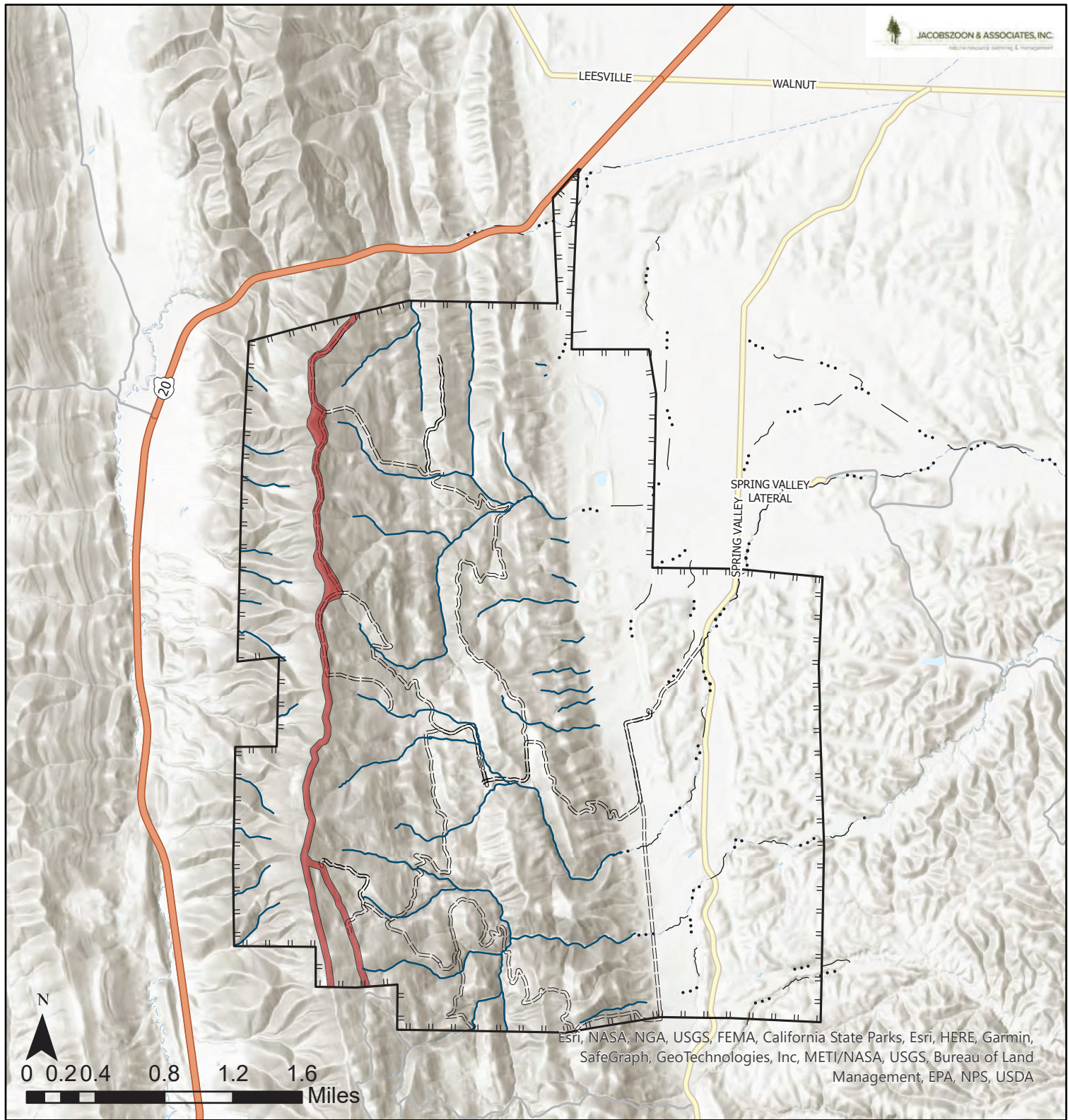


# Attachment B Project Maps



Esri, NASA, NGA, USGS, FEMA, California State Parks, Esri, HERE, Garmin, SafeGraph, GeoTechnologies, Inc, METI/NASA, USGS, Bureau of Land Management, EPA, NPS, USDA

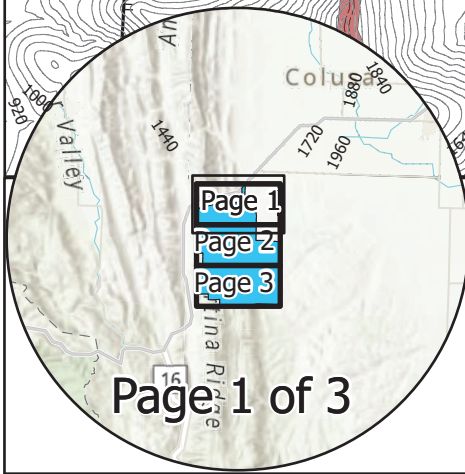
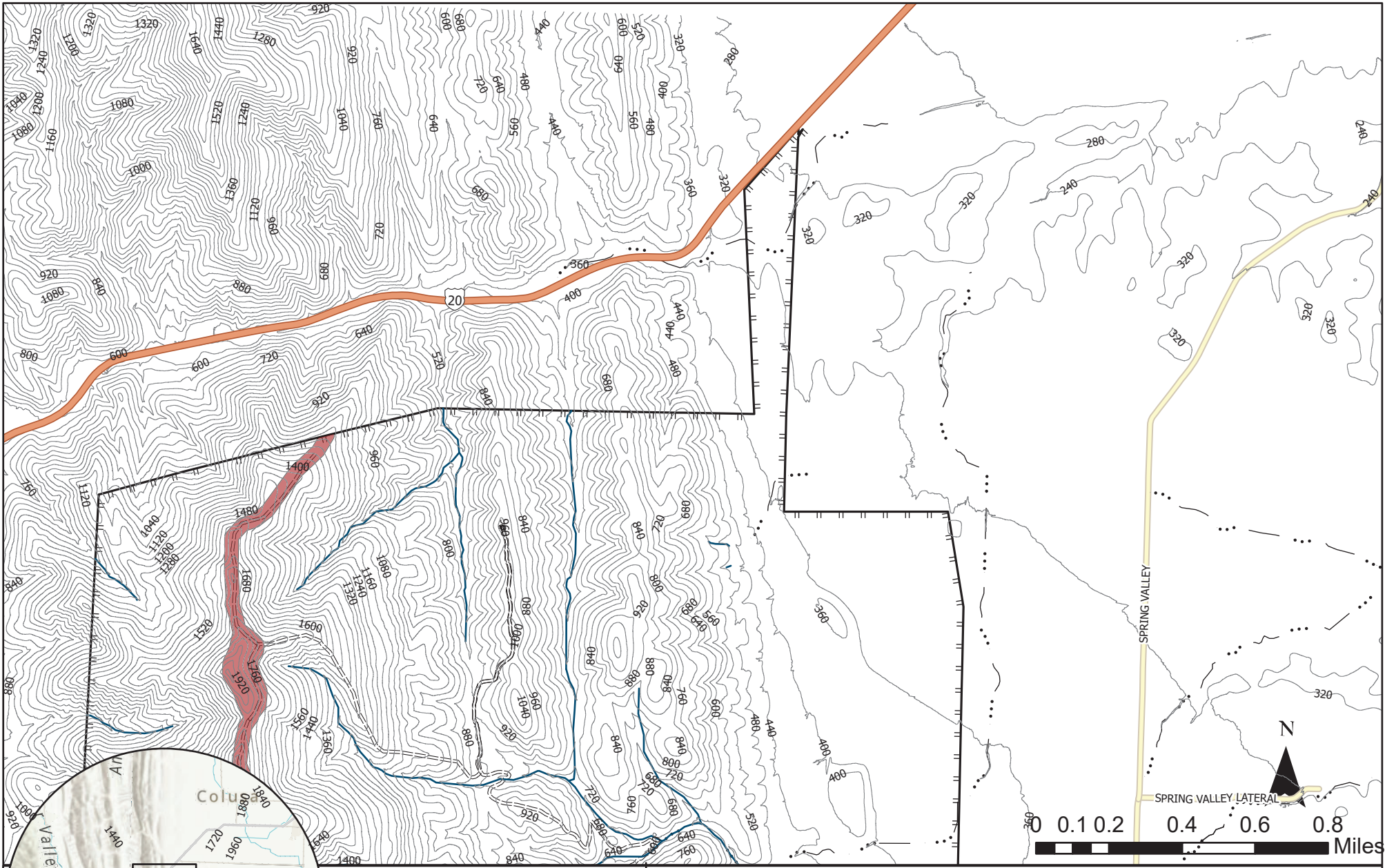
# Favero Ranch CalVTP Overview Map

Sections 1,2,3,4,5,8,9,10,11,14,15,16,17,19,20, 21,22,23,26,27T14N R04W & Section 33 T15M R04W MDBM Colusa County, CA  
 Project Address: 1958 Spring Valley RD & 1961 Spring Valley RD  
 Williams CA 95987

## Legend

- Project Boundary
- State Highway
- Watercourse- Confirmation Needed
- Confirmed Watercourse
- Colusa County Maintained Roads
- Seasonal Private Roads
- Fuelbreak Treatment
- \* All Areas Ecological Restoration Treatment













[Page 1](#)  
[Page 2](#)  
[Page 3](#)

Page 1 of 3

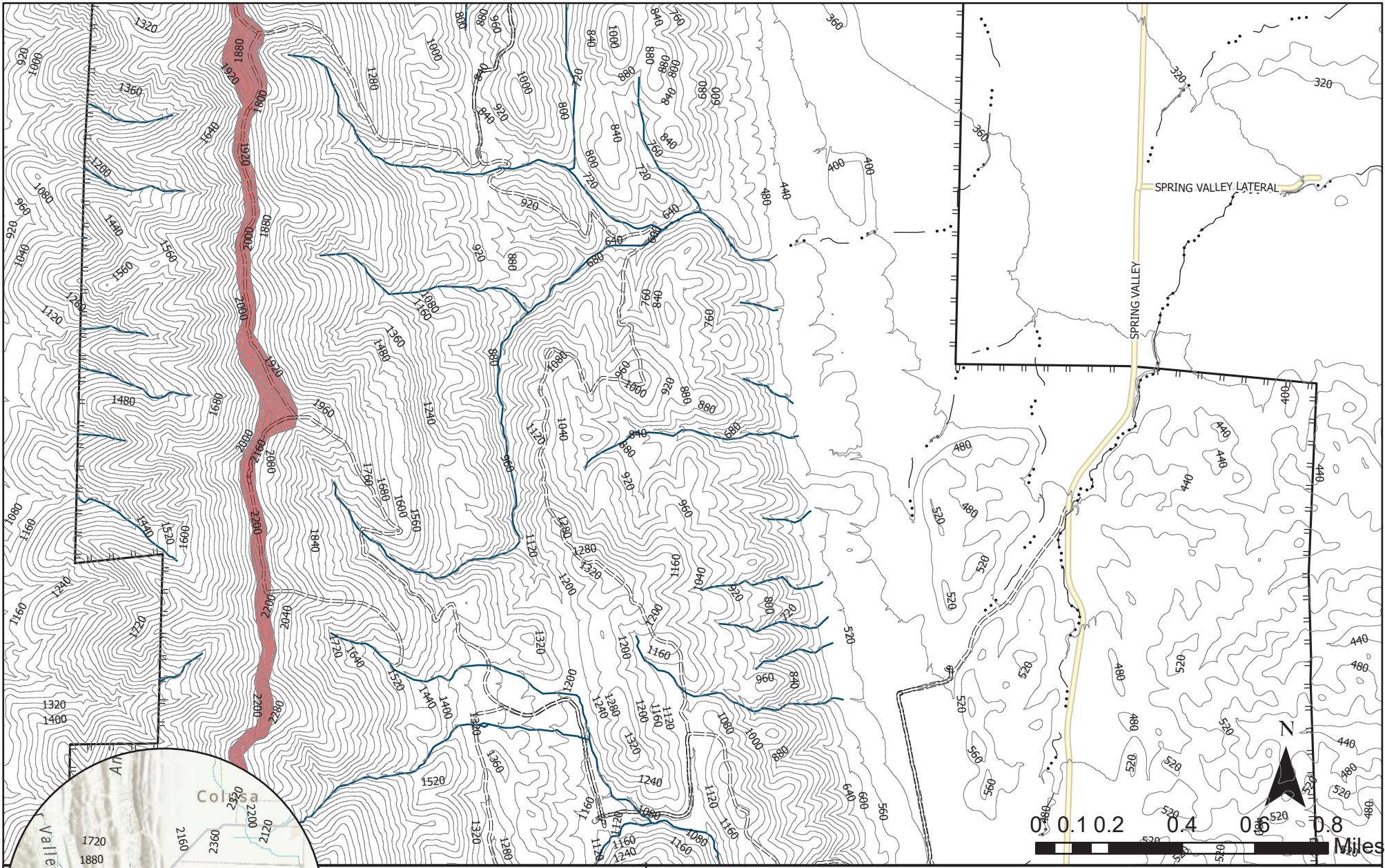
## Favero Ranch CalVTP Treatment Map

Scale: 1:23,000  
 Sections 1,2,3,4,5,8,9,10,11,14,15,16,  
 17,19,20,21,22,23,26,27 T14N R04W &  
 Section 33 T15M R04W MDBM Colusa County, CA


 JACOBSZOON & ASSOCIATES, INC.  
Public Resource Planning & Management

<ul style="list-style-type: none"> <li> State Highway</li> <li> Watercourse- Confirmation Needed</li> <li> Seasonal Private Roads</li> <li> Confirmed Watercourse</li> </ul>	<ul style="list-style-type: none"> <li> Colusa County Maintained Roads</li> <li> Seasonal Private Roads</li> <li> Project Boundary</li> </ul>	<ul style="list-style-type: none"> <li> Fuel Break Treatment</li> </ul> <p>*Entire Project Area is Ecological Restoration Treatment</p> <p>40 ft. Contour Interval</p>
--	--	---





# Favero Ranch CalVTP Treatment Map

Scale: 1:23,000  
 Sections 1,2,3,4,5,8,9,10,11,14,15,16,  
 17,19,20,21,22,23,26,27 T14N R04W &  
 Section 33 T15M R04W MDBM Colusa County, CA



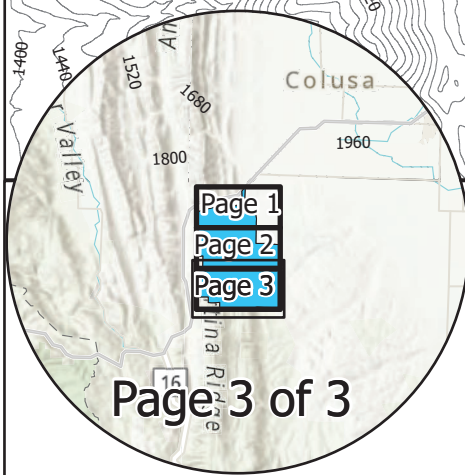
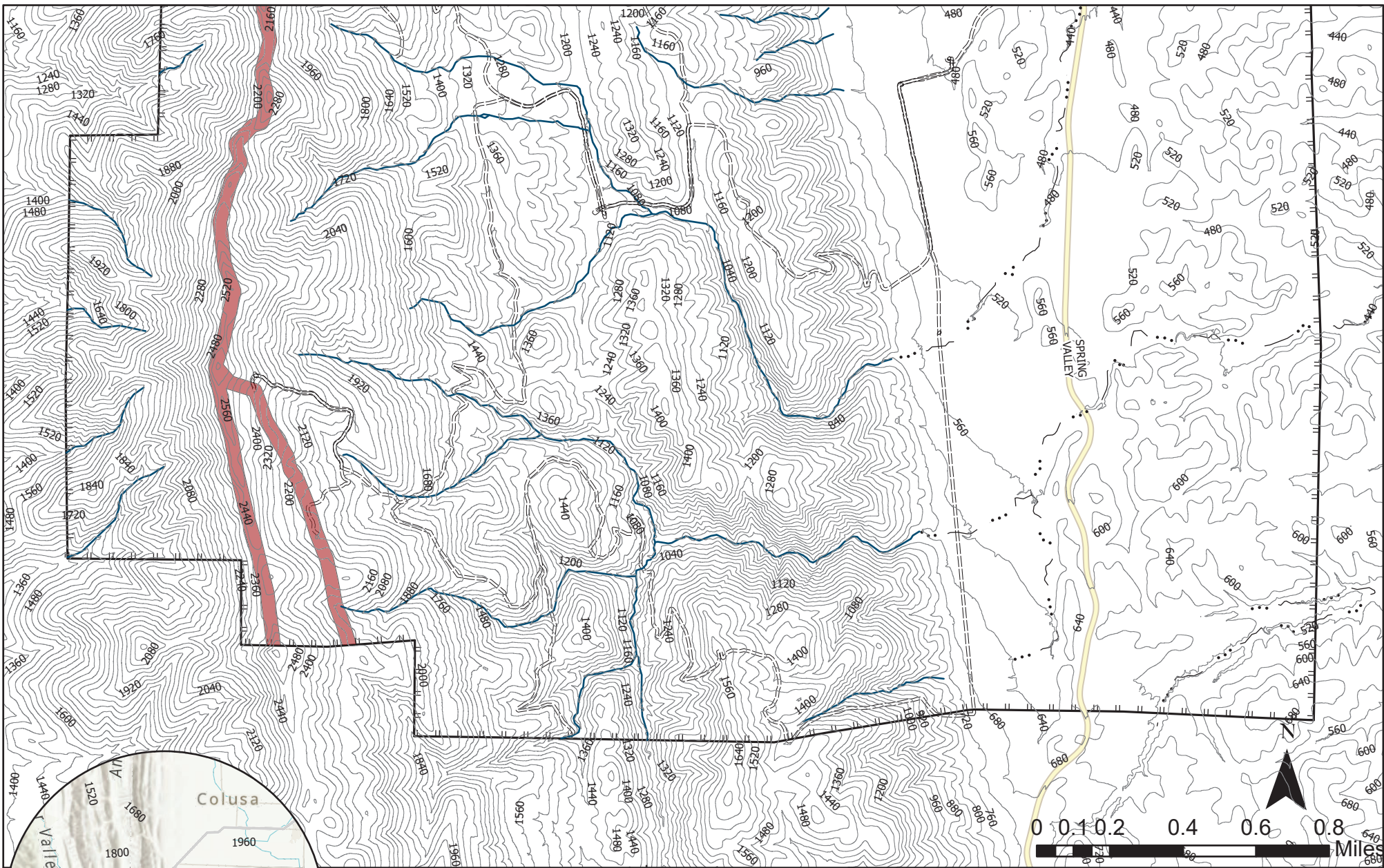
## Legend

- State Highway
  - Watercourse- Confirmation Needed
  - Seasonal Private Roads
  - Confirmed Watercourse
  - Colusa County Maintained Roads
  - Project Boundary
  - Fuel Break Treatment
- \*Entire Project Area is Ecological Restoration Treatment  
 40 ft. Contour Interval

Page 1  
Page 2  
Page 3

Page 2 of 3





## Favero Ranch CalVTP Treatment Map

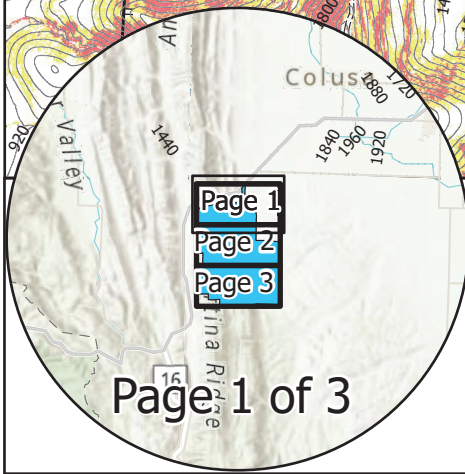
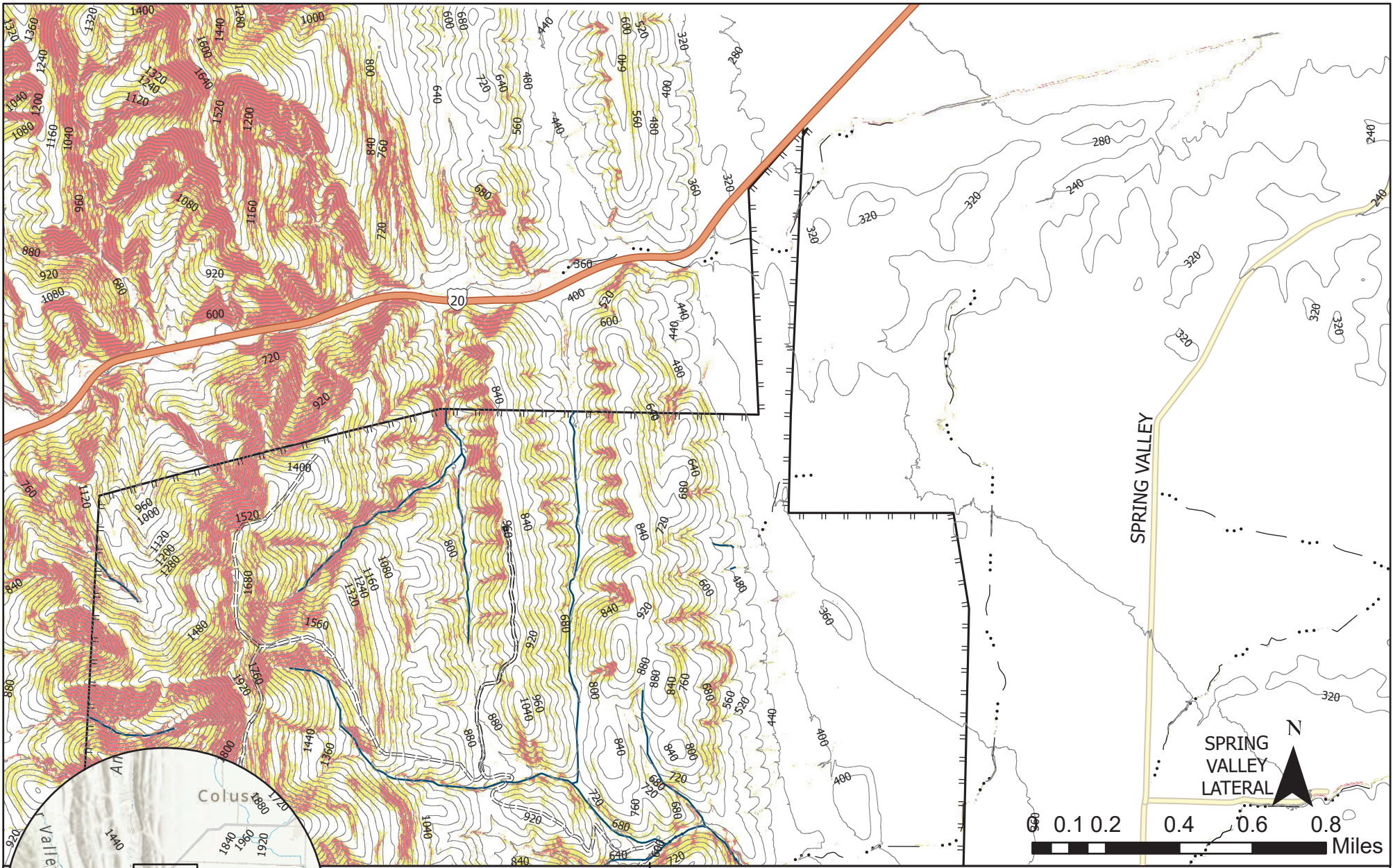
Scale: 1:23,000  
 Sections 1,2,3,4,5,8,9,10,11,14,15,16,  
 17,19,20,21,22,23,26,27 T14N R04W &  
 Section 33 T15M R04W MDBM Colusa County, CA

JACOBSZON & ASSOCIATES, INC.  
WATER RESOURCES PLANNING & MANAGEMENT

### Legend

State Highway	Colusa County Maintained Roads	Fuel Break Treatment
Watercourse- Confirmation Needed	Seasonal Private Roads	*Entire Project Area is Ecological Restoration Treatment
Confirmed Watercourse	Project Boundary	40 ft. Contour Interval





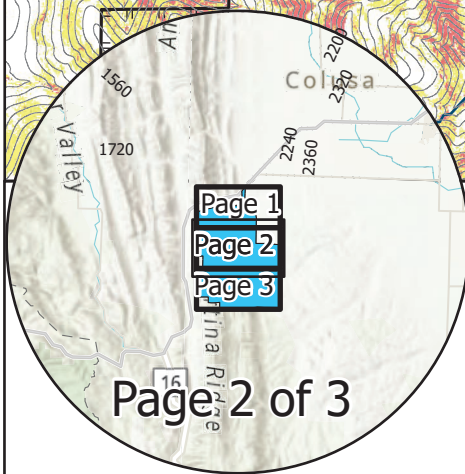
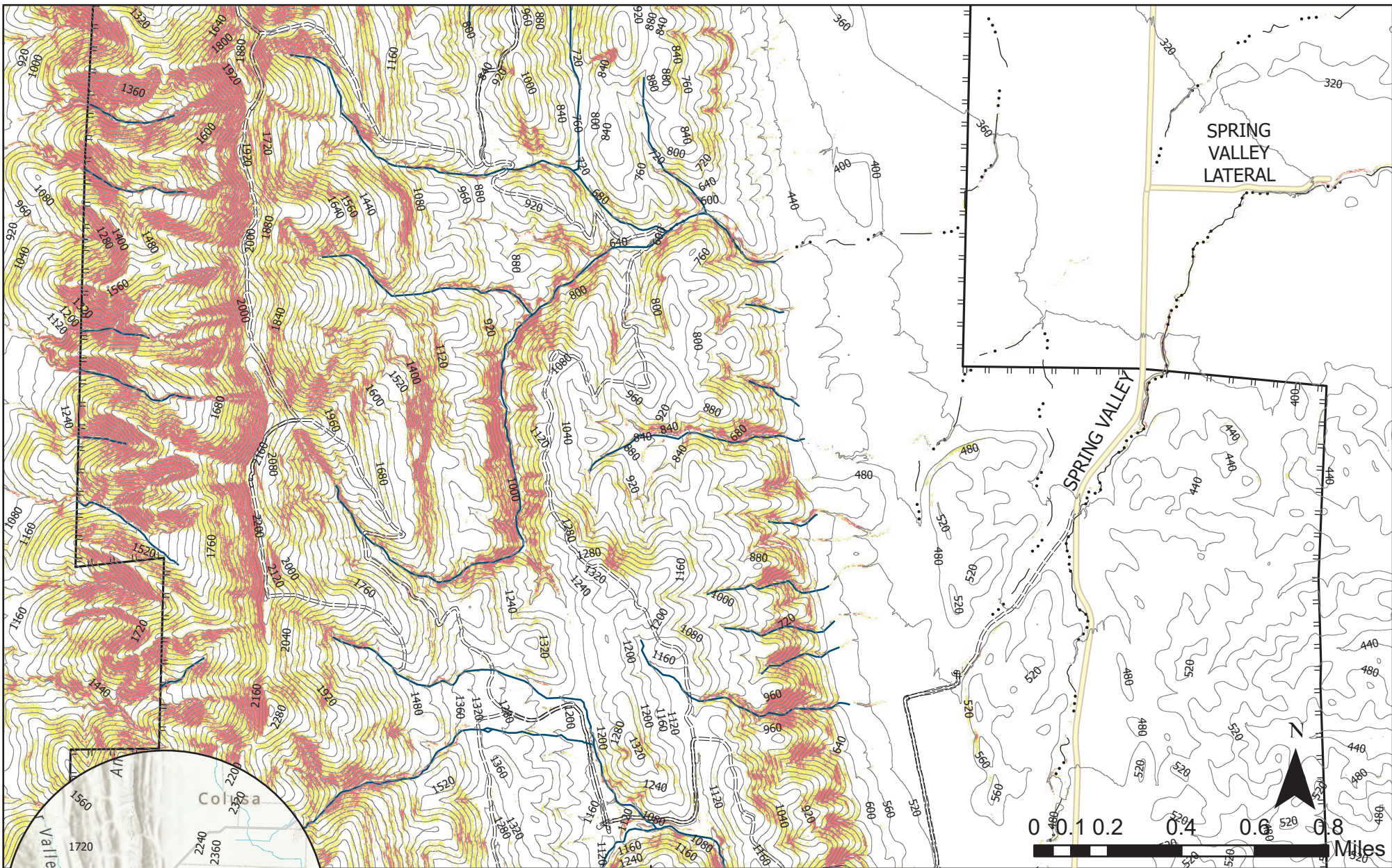
## Favero Ranch CalVTP Slopes Map

Scale: 1:23,000  
 Sections 1,2,3,4,5,8,9,10,11,14,15,16,  
 17,19,20,21,22,23,26,27 T14N R04W &  
 Section 33 T15M R04W MDBM Colusa County, CA

JACOBSZON & ASSOCIATES, INC.  
NATURAL RESOURCES PLANNING & MANAGEMENT

<ul style="list-style-type: none"> <li> State Highway</li> <li> Watercourse- Confirmation Needed</li> <li> Confirmed Watercourse</li> </ul>	<ul style="list-style-type: none"> <li> Colusa County Maintained Roads</li> <li> Seasonal Private Roads</li> <li> Project Boundary</li> </ul>	<h3>Legend</h3> <p><b>Steep Slope Areas</b></p> <ul style="list-style-type: none"> <li> 50 - 65% Slopes</li> <li> 65%+ Slopes</li> </ul> <p>40 ft. Contour Interval</p>
---	---	---





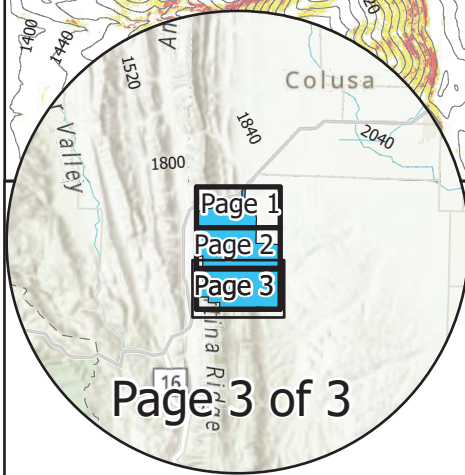
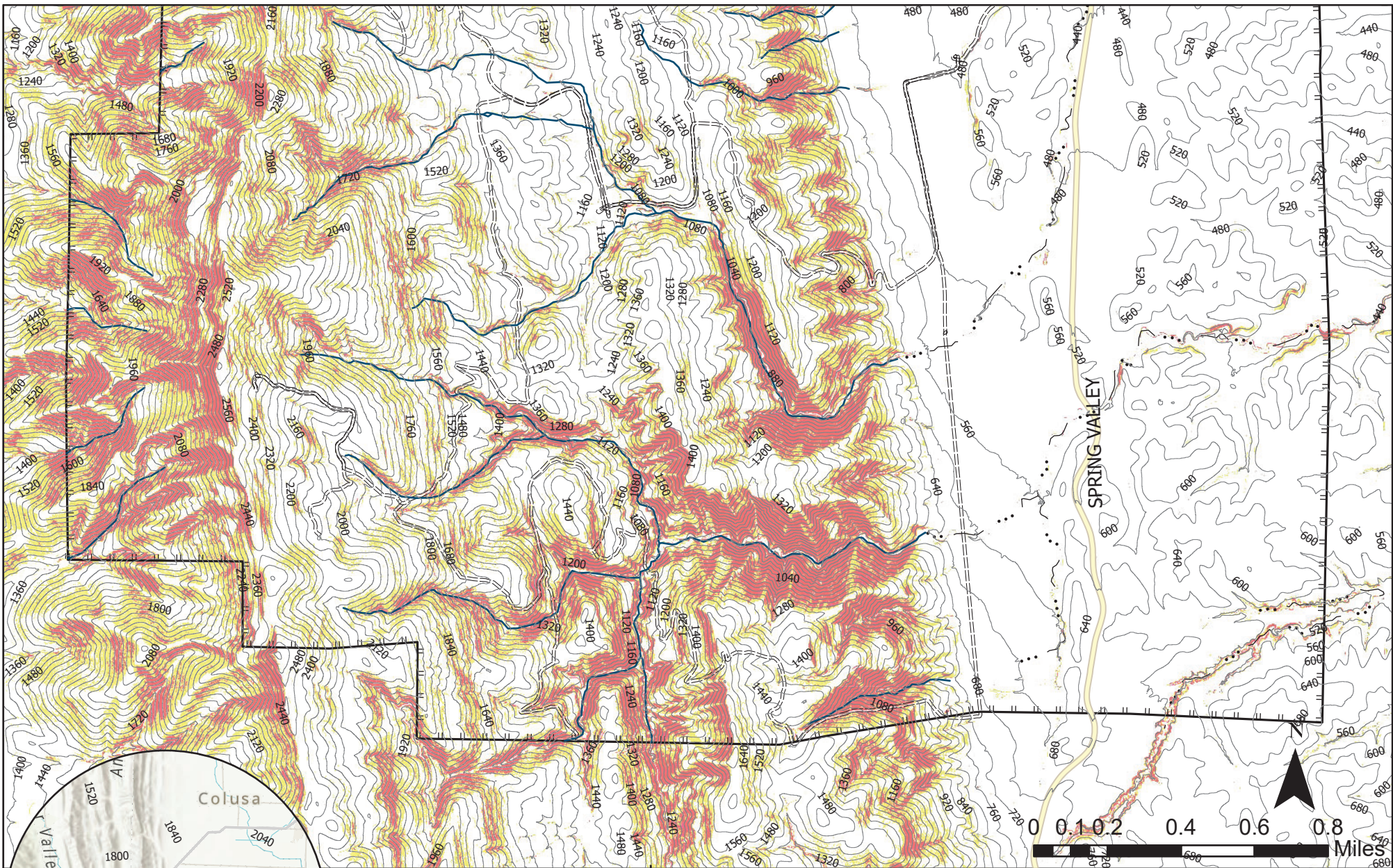
## Favero Ranch CalVTP Slopes Map

Scale: 1:23,000  
 Sections 1,2,3,4,5,8,9,10,11,14,15,16,  
 17,19,20,21,22,23,26,27 T14N R04W &  
 Section 33 T15M R04W MDBM Colusa County, CA



<p><b>Legend</b></p>		<p><b>Steep Slope Areas</b></p>
<p>— State Highway</p>	<p>— Colusa County Maintained Roads</p>	<p>50 - 65% Slopes</p>
<p>— Watercourse- Confirmation Needed</p>	<p>--- Seasonal Private Roads</p>	<p>65%+ Slopes</p>
<p>... - Confirmed Watercourse</p>	<p>▭ Project Boundary</p>	<p>40 ft. Contour Interval</p>





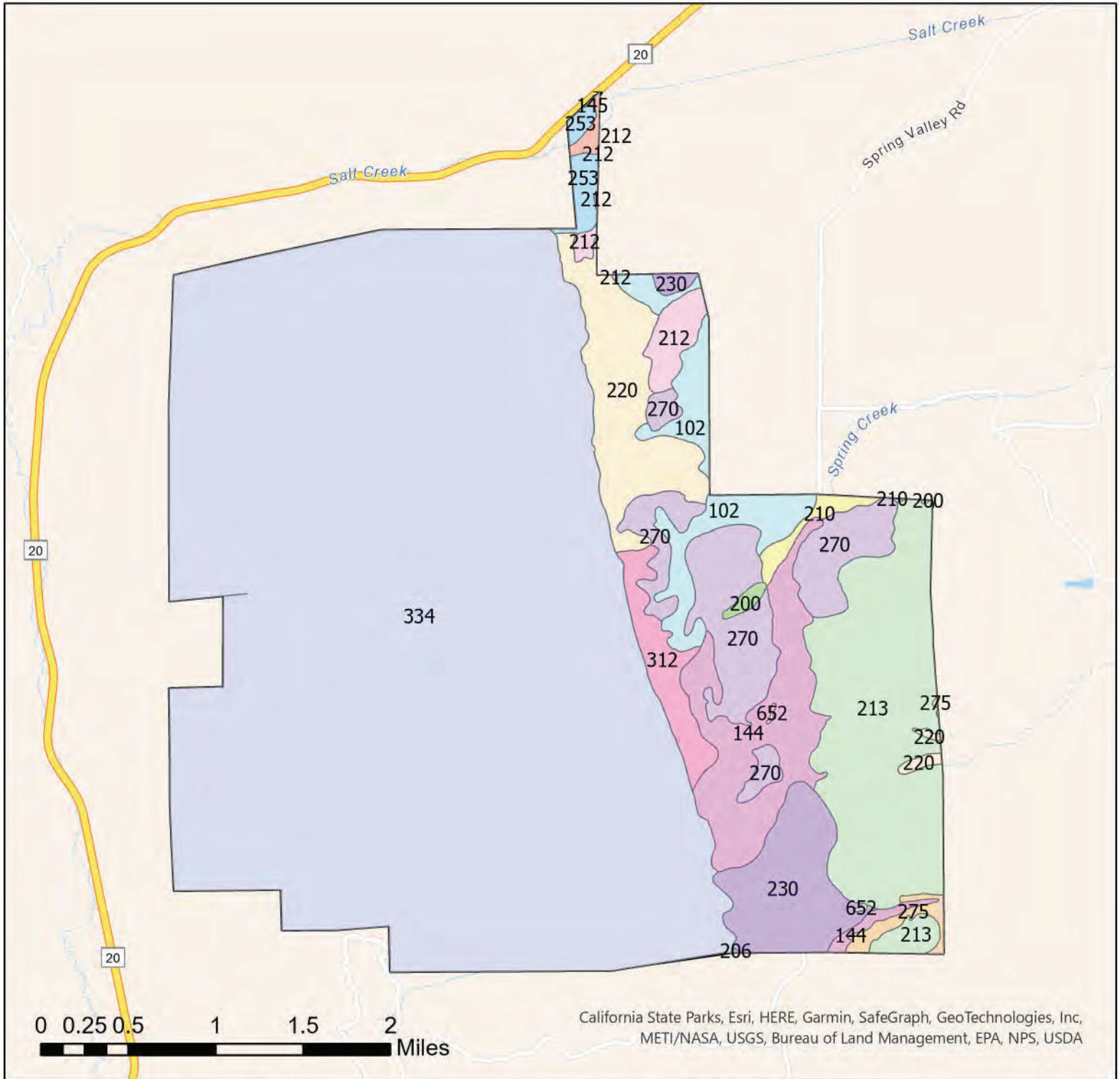
## Favero Ranch CalVTP Slopes Map

Scale: 1:23,000  
 Sections 1,2,3,4,5,8,9,10,11,14,15,16,  
 17,19,20,21,22,23,26,27 T14N R04W &  
 Section 33 T15M R04W MDBM Colusa County, CA

JACOBSZON & ASSOCIATES, INC.  
Public Resources Planning & Management

<p><b>Legend</b></p>		<p><b>Step Slope Areas</b></p>
<p>— State Highway</p>	<p>— Colusa County Maintained Roads</p>	<p>50 - 65% Slopes</p>
<p>— Watercourse- Confirmation Needed</p>	<p>--- Seasonal Private Roads</p>	<p>65%+ Slopes</p>
<p>... - Confirmed Watercourse</p>	<p>▭ Project Boundary</p>	<p>40 ft. Contour Interval</p>





**Favero Ranch CalVTP**

**Soils Map**

N



Scale: 1:50,000



**Legend**

Project Boundary

**Soils Code**

- 102
- 144
- 145
- 200

- 206
- 210
- 212
- 213
- 220
- 230
- 253

- 270
- 275
- 312
- 334
- 652

\*Soil 334 is Medium EHR all others Low EHR.