

2018

LOCAL HAZARD MITIGATION PLAN



Prepared by: Terri Rollings, Emergency
Services Manager/PIO
Jurupa Valley, California

1/1/2018

RPC 4(c)(iii)

CONTACT INFORMATION

City of Jurupa Valley

Name: Terri Rollings
Title: Emergency Services Manager/PIO
Address: 8930 Limonite Ave.
City, State, Zip: Jurupa Valley, CA 92509

Direct Contact: (951) 332-6464 ext, 249
Fax: (951) 332-6995
Email: trollings@jurupavalley.org

PLAN ADOPTION/RESOLUTION

The City of Jurupa Valley will submit plans to Riverside County Emergency Management Department (EMD) who will forward to California Governor's Office of Emergency Services (Cal OES) for review prior to being submitted to the Federal Emergency Management Agency (FEMA). In addition, we will wait to receive an "Approval Pending Adoption" letter from FEMA before taking the plan to our local governing bodies for adoption. Upon approval, the City of Jurupa Valley will insert the signed resolution.

EXECUTIVE SUMMARY

The purpose of this local hazard mitigation plan is to identify the City's hazards, review and assess past disaster occurrences, estimate the probability of future occurrences and set goals to mitigate potential risks to reduce or eliminate long-term risk to people and property from natural and man-made hazards.

The plan was prepared pursuant to the requirements of the Disaster Mitigation Act of 2000 to achieve eligibility and potentially secure mitigation funding through Federal Emergency Management Agency (FEMA) Flood Mitigation Assistance, Pre-Disaster Mitigation, and Hazard Mitigation Grant Programs.

City's continual efforts to maintain a disaster-mitigation strategy is on-going. Our goal is to develop and maintain an all-inclusive plan to include all jurisdictions, special districts, businesses and community organizations to promote consistency, continuity and unification.

The City's planning process followed a methodology presented by FEMA and Cal OES which included conducting meetings with the Operational Area Planning Committee (OAPC) coordinated by Riverside County Emergency Management Department (EMD) comprised of participating Federal, State and local jurisdictions agencies, special districts, school districts, non-profit communities, universities, businesses, tribes and general public.

The plan identifies vulnerabilities, provides recommendations for prioritized mitigation actions, evaluates resources and identifies mitigation shortcomings, provides future mitigation planning and maintenance of existing plan.

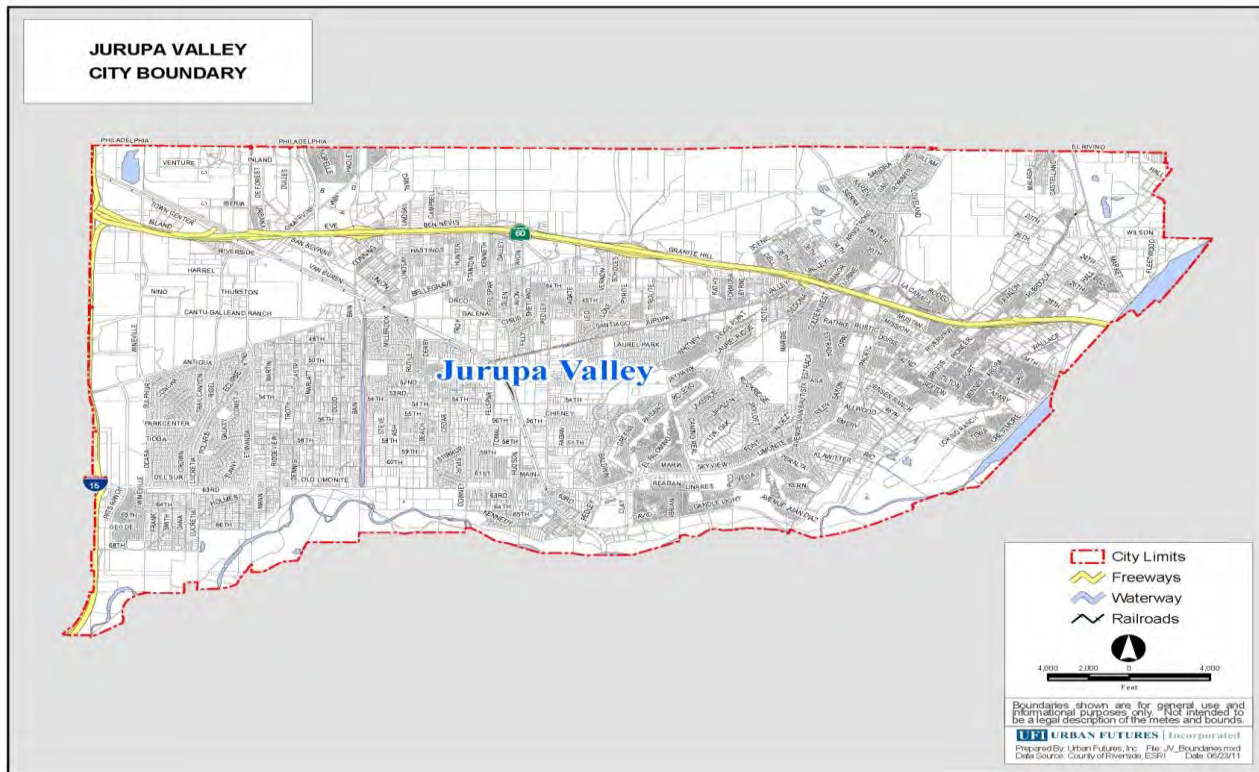
The plan will be implemented upon FEMA approval.

TABLE OF CONTENTS

CONTACT INFORMATION	1
PLAN ADOPTION/RESOLUTION	2
EXECUTIVE SUMMARY	3
TABLE OF CONTENTS	4
SECTION 1.0 - COMMUNITY PROFILE	5
1.1 CITY MAP	5
1.2 GEOGRAPHY AND CLIMATE DESCRIPTION.....	5
1.3 BRIEF HISTORY	6
1.4 ECONOMY DESCRIPTION.....	6
1.5 POPULATION AND HOUSING	9
1.6 DEVELOPMENT TRENDS AND LAND USE	10
SECTION 2.0 - PLANNING PROCESS.....	11
2.1 LOCAL PLANNING PROCESS	11
2.2 PARTICIPATION IN REGIONAL (OA) PLANNING PROCESS.....	11
2.3 DATES AVAILABLE FOR PUBLIC COMMENT	11
2.4 PLANS ADOPTED BY RESOLUTION.....	12
SECTION 3.0 – MITIGATION ACTIONS/UPDATES	12
3.1 UPDATES FROM 2012 PLAN	12
3.2 LIST OF COUNTY AND CITY HAZARDS.....	12
3.3 BRIEF STATEMENT OF UNIQUE HAZARDS	13
3.4 MITIGATION PROJECT UPDATES	16
SECTION 4.0 - HAZARD IDENTIFICATION AND RISK ASSESSMENT.....	16
4.1 CRITICAL FACILITIES AND INFRASTRUCTURES	16
4.2 ESTIMATING POTENTIAL LOSS.....	17
4.3 TABLE REPLACEMENT VALUES.....	17
4.4 IDENTIFICATION OF RISKS AND VULNERABILITIES	20
SECTION 5.0 – COMMUNITY RATING SYSTEM.....	22
5.1 REPETITIVE LOSS PROPERTIES	22
5.2 NATIONAL FLOOD INSURANCE PROPERTIES	22
SECTION 6.0 - CAPABILITIES ASSESSMENT	23
6.1 REGULATORY MITIGATION CAPABILITIES	23
6.2 ADMINISTRATIVE/TECHNICAL MITIGATION CAPABILITIES	24
6.3 FISCAL MITIGATION CAPABILITIES	25
6.5 FUNDING OPPORTUNITIES	26
SECTION 7.0 - MITIGATION STRATEGIES	26
7.1 GOALS AND OBJECTIVES.....	26
7.2 MITIGATION ACTIONS.....	26
7.3 ON-GOING MITIGATION STRATEGY PROGRAMS.....	29
7.4 FUTURE MITIGATION STRATEGIES.....	30
SECTION 8.0 - PLAN IMPLEMENTATION AND MAINTENANCE PROCESS	31
SECTION 9.0 - INCORPORATION INTO EXISTING PLANNING MECHANISMS	32
SECTION 10.0 - CONTINUED PUBLIC INVOLVEMENT	32
APPENDIX A – PUBLIC OUTREACH OPPORTUNITIES & JURUPA VALLEY BOUNDARY PLAN MAP	33

SECTION 1.0 - COMMUNITY PROFILE

1.1 CITY MAP



1.2 GEOGRAPHY AND CLIMATE DESCRIPTION

The City of Jurupa Valley covers a 44 square mile area and is approximately 5 miles west of the County seat, the City of Riverside. Jurupa Valley is approximately 60 miles east of the City of Los Angeles and approximately 90 miles north of San Diego. The City borders San Bernardino County to the north, Riverside and Norco to the east and south and the City of Eastvale to the West. Portions of the Santa Ana River traverse the southern portion of the city. Two primary transportation corridors traverse the City, Interstate 15 which runs north and south, and State Highway 60, which runs east and west.

The City of Jurupa Valley has a moderate climate with annual rainfall at approximately 2 – 3.5 inches per year. Vegetation is green and bountiful in the winter but can become dry and dense during the summer months. Summers are warm and can reach temperatures above 109 degrees during the peak of the day and remain in the high 80's during the evenings. Winter weather is mild averaging 65 – 76 degrees during the day and dropping down into the mid 30's or 40's in the evenings. Throughout most of the year, you can usually count on warm sunny days, with occasional mild to gusty winds throughout the late summer, fall, and early winter seasons.

1.3 BRIEF HISTORY

The City of Jurupa Valley was incorporated on July 1, 2011 by a group of passionate community volunteers. It is proud to be the 482nd City in California and the 28th City in Riverside County. The City of Jurupa Valley has a long history stretching back to the earliest days of California. Originally part of the vast Mexican land grant known as “Rancho Jurupa”, the area evolved from the days of the caballeros to a place today with a population of over 101,000 people. Its history includes ranching, farming, dairy, mining, and urban growth while maintaining a rural atmosphere. Most of the agricultural areas have been subdivided and formed into many smaller communities such as Glen Avon, Pedley, Mira Loma, BellTown, Rubidoux, Sunnyslope, West Riverside, Granite Hill, Sky Country, and Indian Hills, to name a few.

The City of Jurupa Valley today reflects an equestrian lifestyle that is a mix of high and low density residential development, rural farming and other agricultural activities, and a mix of commercial retail and industrial activity. Many areas have large lots that allow the keeping of horses and other farm animals. Residents here enjoy the close proximity of the Santa Ana River bottom for trail riding and hiking as well as the numerous trails, golf courses, parks, and open areas located throughout the city.

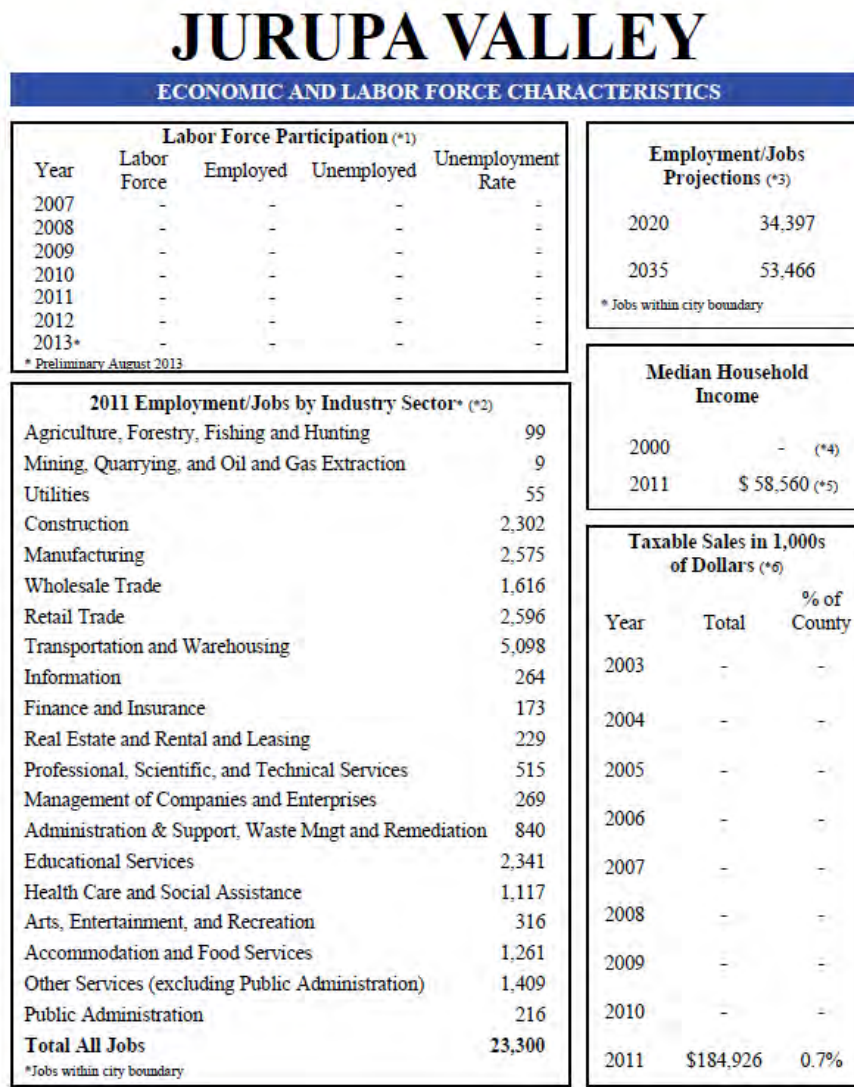
The City of Jurupa Valley has significant capacity for expansion of both residential and commercial development activity. It has been in recent years that residential development and economic activity has increased in particular in the areas adjacent to the I-15 and Hwy 60. The City is a general-law form of government with Council-Manager administration and the City Manager appointed by the five council-members elected at-large.

1.4 ECONOMY DESCRIPTION

Although primarily a bedroom community which limits the sales and property tax base, the City of Jurupa Valley has a diverse business and job base that includes the non-manufacturing sector of agriculture, retail, trucking/warehouse distribution centers, and other support services. The largest employers in the area are the local school district, community service agencies, retail and grocery stores, and smaller manufacturing companies. The area’s labor force includes professional, skilled, and semi-skilled workers.

Expanding commercial and residential opportunities in Jurupa Valley will be a major City focus over the next several years. The majority of residents currently travel to other areas to shop, decreasing the taxable income of the city. As a brand new city, Jurupa Valley will be able to offer excellent retail sites, fast track development processing, and future housing growth opportunities. With a continually growing population base, this makes the City very attractive to retailers and other commercial users.

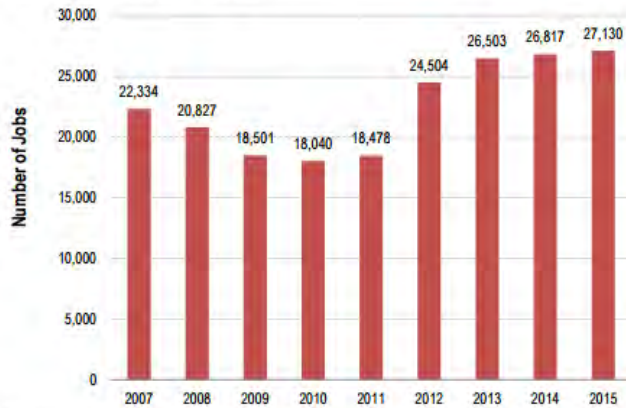
Figure 1.4A City of Jurupa Economic and Labor Characteristics



Sources: ^(*1) CA Employment Development Department (City residents working anywhere. Data are not seasonally adjusted)
^(*2) U.S. Census Bureau Local Employment Dynamics
^(*3) Riverside County Projections (RCP10)
^(*4) Decennial Census, US Census Bureau (in 1999 inflation-adjusted dollars).
^(*5) 2007-2011 American Community Survey 5-Year Estimates (in 2011 inflation-adjusted dollars).
^(*6) State Board of Equalization
 Note: Totals might not add up due to rounding.
 Comparing data between years may be problematic because of incorporations & annexations.
 Projections are based on April 1, 2010 boundary; therefore, current or future employment in the annexed area may not be reflected in these projections.

Total Jobs

Total Jobs: 2007 - 2015



Sources: California Employment Development Department, 2007 - 2015; InfoGroup; and SCAG

- Total jobs include wage and salary jobs and jobs held by business owners and self-employed persons. The total job count does not include unpaid volunteers or family workers, and private household workers.
- In 2015, total jobs in the City of Jurupa Valley numbered 27,131, an increase of 21.5 percent from 2007.

1.5 POPULATION AND HOUSING

According to the most current State Department of Finance Report released in May 2017, the City of Jurupa Valley has a current population base of 101,315.

Figure 1.5A City of Jurupa Valley Population Characteristics

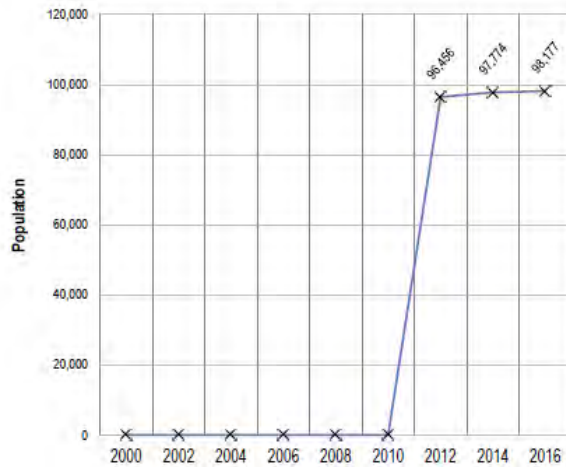
2017 Local Profile

City of Jurupa Valley

II. Population

Population Growth

Population: 2011 - 2016 2016



Source: California Department of Finance, E-5, 2016

- In 2016, the total population of the City of Jurupa Valley was 98,177.
- 4.2% of the total population of Riverside County is in the City of Jurupa Valley.
- The City of Jurupa Valley was incorporated in 2011, therefore data for previous years is not available.

Figure 1.5B City of Jurupa Housing and Household Characteristics

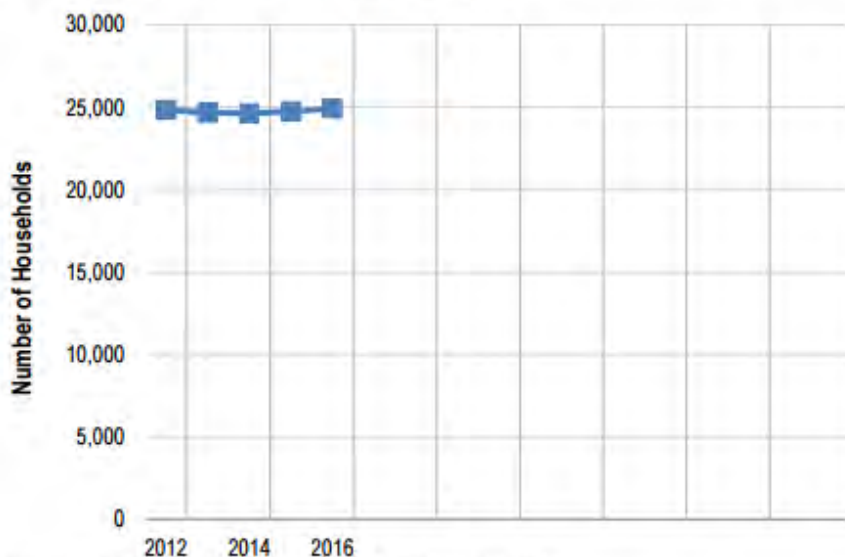
2017 Local Profile

City of Jurupa Valley

III. Households

Number of Households (Occupied Housing Units)

Number of Households: 2012 - 2016



Source: California Department of Finance, E-5, 2016

- In 2016, the total number of households in the City of Jurupa Valley was 24,936 units.
- 3.5 percent of Riverside County's total number of households are in the City of Jurupa Valley.
- In 2016, the city's average household size was 3.9, higher than the county average of 3.2.

1.6 DEVELOPMENT TRENDS AND LAND USE

With a population of approximately 101,315 the Jurupa Valley has tremendous potential for commercial development to serve the local communities as well as freeway related commercial development.

The Riverside County Economic Development Strategic Plan identified that the area suffers from significant retail leakage to outside communities. A large amount of prime vacant land is available for such commercial development locations in Mira Loma, Glen Avon and Pedley.

Some of these potential development locations are near Pedley Road at the 60 Freeway, Limonite at Interstate 15, Limonite Avenue at Van Buren Boulevard, Mission Boulevard at Pedley Road and Limonite Avenue at Clay Street. In addition, the Mission Boulevard Revitalization Program in Rubidoux will stimulate the rebuilding of the central business core.

Through redevelopment, a project area will receive focused attention and financial investment to reverse deteriorating trends and structures, create jobs, revitalize the business climate, rehabilitate and add to the affordable housing stock, and gain active participation and investment by citizens which may not otherwise occur in areas where the private sector are less inclined to invest without governmental assistance.

SECTION 2.0 - PLANNING PROCESS

2.1 LOCAL PLANNING PROCESS

Representatives from multiple City departments met on a regular basis to identify and prioritize hazards and appropriate mitigation strategies. All Stakeholders were invited to participate through phone calls, emails, and meetings.

City Departments represented at these meetings included:

- City Manager
- Emergency Services Manager/PIO
- Jurupa Valley Sheriff's Department Deputy and Lieutenant
- Riverside County Fire Department, Battalion Chief
- City Engineer/Public Works Director
- Chief Building Office

2.2 PARTICIPATION IN REGIONAL (OA) PLANNING PROCESS

The City of Jurupa Valley is California's newest incorporated city as of July 1, 2011. We did not come into the LHMP planning process until the end of October of 2011. The hiring of consultants to staff the numerous city positions did not occur right away however, staff and council realized the importance of participation within the LHMP, and the identification and development of the city's LHMP plan became a priority.

Planning:

- May 11, 2017 - One on one meeting with EMD LHMP Team
- OAPC – Meets quarterly
- Riverside County Emergency Management Department LHMP Workshop – June 6th 2016, EMD Riverwalk building, Riverside CA. 9 a.m. to 10 a.m.

2.3 DATES AVAILABLE FOR PUBLIC COMMENT

This document will be published on the City's social media account and website at www.jurupavalley.org. Screenshot of this is included under Appendix A. The document will also be available at City Hall with a comment box nearby. Photos of this display are included under Appendix A. Further, the City of Jurupa Valley intends to allow an organized forum for public comment when such activities can be scheduled during the 2018 calendar year.

2.4 PLANS ADOPTED BY RESOLUTION

Upon approval by FEMA, the LHMP will be presented to the Jurupa Valley City Council in a public meeting for adoption via an official Resolution.

SECTION 3.0 – MITIGATION ACTIONS/UPDATES

3.1 UPDATES FROM 2012 PLAN

There are no significant changes in priorities. All items listed in the mitigation strategies have been addressed and are complete or updated.

3.2 LIST OF COUNTY AND CITY HAZARDS

Riverside County Hazards	Final Ranking	Jurupa Valley Hazards	Final Ranking
Earthquake	1	Earthquake	1
Pandemic Flu	2	Pandemic Flu	2
Wildland Fire	3	Wildland Fire	3
Electrical Failure	4	Electrical Failure	4
Emergent Disease/Contamination	5	Emergent Disease/Contamination	5
Cyber Attack	6	Flood	6
Terrorist Event	7	Terrorist Event	7
Communications Failure	8	Communications Failure	8
Flood	9	Civil Disorder	9
Civil Disorder	10	Drought	10
Drought	11	Nuclear/Radiological Incident	11
Nuclear/Radiological Incident	12	Extreme Weather	12
Extreme Weather	13	Transportation Failure	13
Transportation Failure	14	Water Supply Disruption/Contamination	14
Dam Failure	15	Landslide	15
Aqueduct	16	Insect Infestation	16
Tornado	17	HazMat Incident	17
Insect Infestation	18	Pipeline Disruption	18
Jail/Prison Event	19	Dam Failure	19
Pipeline Disruption	20	Acqueduct	20
Landslide	21	Tornado	21
HazMat Incident	22	Cyber Attack	22
Water Supply Disruption/Contamination	23	Jail/Prison Event	23

3.3 BRIEF STATEMENT OF UNIQUE HAZARDS

The hazards in the City of Jurupa Valley are very similar to Riverside County, including earthquake, flooding, and fire threats. Additionally, the City of Jurupa Valley has potential transportation related hazards since State HWY 60, a major east-west transportation corridor and I-15 both run through the borders of the city. There are major rail line corridors within the city, a Metrolink commuter rail service and station, and numerous freight branch lines. Jurupa Valley is also one of the largest trucking hubs in the State of California with over 44 carriers residing in the city and numerous warehouse distribution centers. Another concern for the city would be the risk of wildfires occurring within the large expanse of the Santa Ana Riverbed that runs through the southern portion of the city.

The most prominent hazards faced by residents of City of Jurupa Valley are a major earthquake, flooding potential from 100 year storm events in winter months along the Santa Ana River bank, and windstorms causing power outages. A long term power outage in summer months could produce life threatening extreme heat conditions for residents without access to air conditioning.

The City could also be impacted by terrorism or bio-terrorism that initially targets the Chino, Flabob and Ontario Airports and then spreads the impact to surrounding communities.

Riverside County has experienced severe flooding many times throughout its history, resulting in the loss of lives and millions of dollars in property damage. Floods are caused by rivers and creeks overrunning their banks, and most property damage has occurred where development has been allowed without regard for flood hazard.

Earthquake risk is very high in western Riverside County (which includes Jurupa Valley), due to the presence of two of California's most active faults: the San Andreas and San Jacinto.

Figure 3.3A City of Jurupa Flood Hazard Map

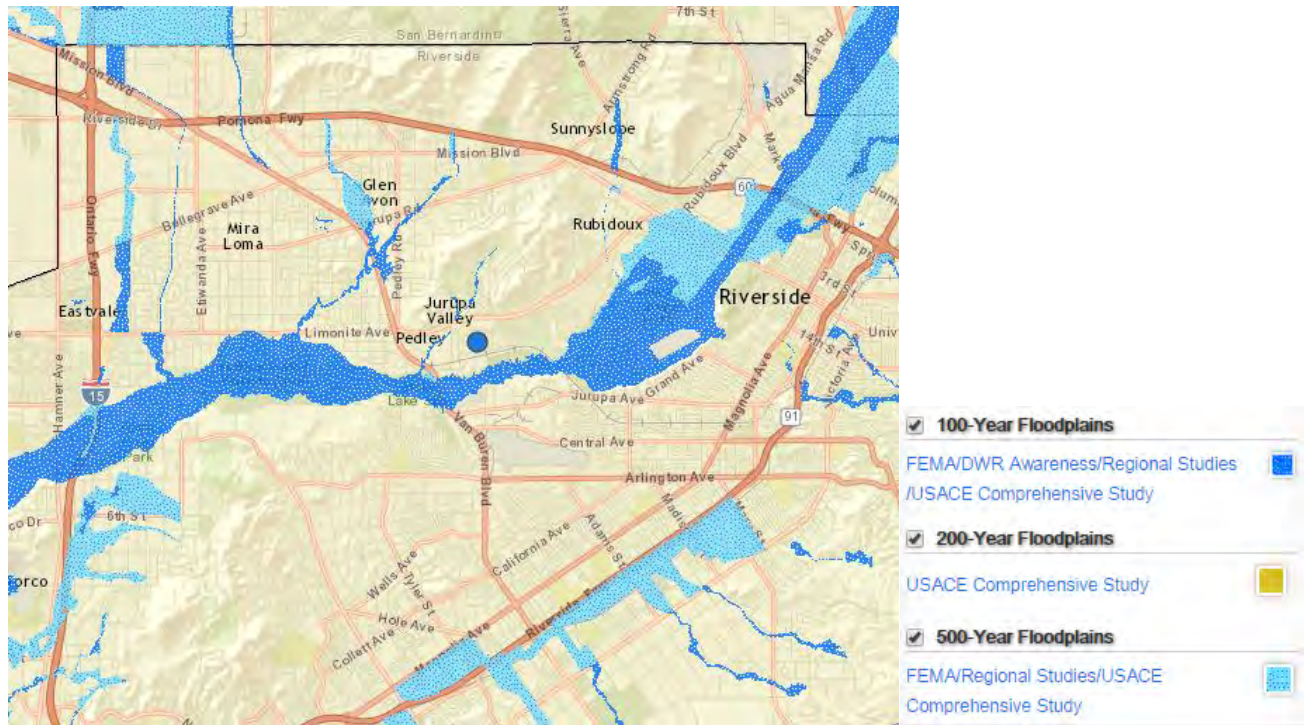


Figure 3.3B City of Jurupa Valley Fire Hazard Map

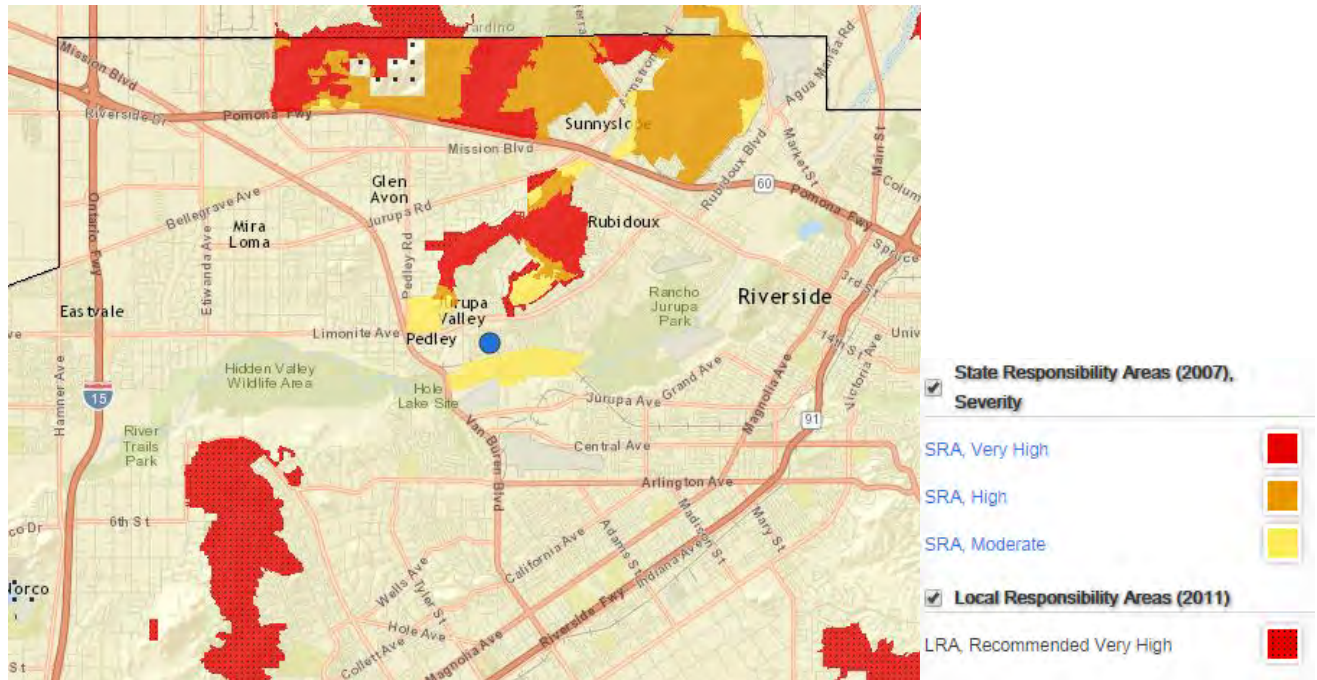


Figure 3.3C City of Jurupa Valley Earthquake Fault Zones



3.4 MITIGATION PROJECT UPDATES

Item	Project Name	Fund (Budget)	Schedule	Comments
RCFCD	Day Creek Channel, Stage 6, F	Construction - Under Const	1. Lucretia closed btwn 65th & 66th until mid-Nov 2012	
JV/ RCFCD 9	Pyrite St Pavement Rehab {See RCFCD Pyrite Ck SD Bypass)	Gas Tax(\$470k)	PS&E: 11/15/12 Bid/Award: Jan- Feb/Mar 2013 Construction: May- Jul 2013	1. Included street work in coord w/ RCF CD Pyrite Channel Bypass project allocate \$310,000 to coop agmt, canst admin by RCFCD 2. Consider reallocation\$160,000 to Local Streets pavement rehab
RCFCD	Day Creek Channel, Line J, Stage 2	Construction: Under construction Feb 2013		Complete.
RCFCD	Mira Lama-Beach St Storm Drain	PS&E: Approved Bid/Award: Ongoing- Nov 6 BOS Award Construction: Dec 15,2012- Dec 2013	1. Plans approved by City;Coop Agreement apvd by City 2. Utility relocations Nov 2012	Complete.
JCSD	Pyrite Creek Trunk Sewer & Force Main	PS&E: 95% Bid/Award: Dec 11,2012 - Jan29, 2013 Construction: Mar 11-Jun 21, 2013		Complete.
JCSD Upstream	Jurupa Rd Trunk Sewer-	PS&E: 100% Bid/Award: Dec 2012-Jan 2013		Complete.
JCSD	Area B Trunk Sewer			Complete.
JCSD	Sky Country Trunk Sewer, Wineville (681h-641h), 64'h (Wineville-Smith), Smith (64th 63'd), Easement (63rd_ Limonite) & Limonite (E'ly to Sky 3 Lift Sta)	PS&E: Approved Bid/Award: Jan-Feb 2013 Construction: March 2013	1. Monitor JCSD schedule; coord construction of Limonite Ave. project, relocate water line to clear deep SS	In-Progress.

SECTION 4.0 - HAZARD IDENTIFICATION AND RISK ASSESSMENT

4.1 CRITICAL FACILITIES AND INFRASTRUCTURES

Critical Facilities Type	Number
Regional Treatment Plant	1
Water Well /Tank Sites	11
Water Distribution Plant	3
Sewer Lift Stations	1

GAS – Blue Rhino	1
Aviation – Flabob Airport	1
Mass Transit RTA bus stops	throughout the city
Cellular Towers	27
City Hall	2
Fire Stations	4
Health Care Facilities	2
Police Station / EOC	1
Maintenance Yards	1
Railroads – Metrolink Station	1
Railroads- intersect throughout City – Union Pacific, Burlington Northern Santa Fe	3
Bridges –Van Buren/Limonite	2
Radio-Motorola	2
Residential Elderly Facilities	3
Schools	26
Community Center	1

4.2 ESTIMATING POTENTIAL LOSS

Map show parcels exposed to flood plain hazards in terms of value of structures. Riverside County’s assessor’s data can be used to calculate the improved value of parcels. (Please refer to Riverside County Operational Area Estimated Property Loss Values by City Table in Section 4.5.

4.3 TABLE REPLACEMENT VALUES

City of Jurupa Valley owns one 26-acre park along the Santa Ana River and four acres along 68th Street. We currently rent office space and as a full “contract city,” both Sheriff and Fire services are contractually procured; the two Community Service Districts and the Jurupa Area Recreation and Parks District are governed by their own board of directors.

NAME OF ASSET	REPLACEMENT VALUE	OCCUPANCY	HAZARD	
CITY HALL				
1.	Jurupa Valley City Hall	Lease - Unknown	On-File	High Ground Shaking High Hazard of Flooding Moderate Fire Hazard Severity Zone
High Schools				
1.	Rubidoux High	Unknown		High Ground Shaking High Hazard of Flooding
2.	Nueva Vista Continuation High	Unknown		High Ground Shaking Low Hazard of Flooding High Fire Hazard Severity Zone
3.	Patriot High	Unknown		High Ground Shaking Low Hazard of Flooding
4.	Jurupa Valley High	Unknown		High Ground Shaking High Hazard of Flooding
5.	Rio Vista Continuation High	Unknown		High Ground Shaking High Hazard of Flooding
Middle Schools				
6.	Mission Middle	Unknown		High Ground Shaking Low Hazard of Flooding
7.	Jurupa Middle	Unknown		High Ground Shaking Low Hazard of Flooding
8.	Mira Loma Middle	Unknown		High Ground Shaking Low Hazard of Flooding
Elementary Schools				
9.	Camino Real Elementary	Unknown		High Ground Shaking Low Hazard of Flooding
10.	Glen Avon Elementary	Unknown		High Ground Shaking High Hazard of Flooding
11.	Granite Hill Elementary	Unknown		High Ground Shaking High Hazard of Flooding Very High Fire Hazard Severity Zone
12.	Ina Arbuckle Elementary	Unknown		High Ground Shaking Low Hazard of Flooding
13.	Indian Hills Elementary	Unknown		High Ground Shaking Low Hazard of Flooding
14.	Mission Bell Elementary	Unknown		High Ground Shaking Low Hazard of Flooding
15.	Pacific Avenue Elementary	Unknown		High Ground Shaking High Hazard of Flooding
16.	Pedley Elementary	Unknown		High Ground Shaking Low Hazard of Flooding
17.	Peralta Elementary	Unknown		High Ground Shaking High Hazard of Flooding
18.	Rustic Lane Elementary	Unknown		High Ground Shaking Low Hazard of Flooding
19.	Sky Country Elementary	Unknown		High Ground Shaking High Hazard of Flooding
20.	Stone Avenue Elementary	Unknown		High Ground Shaking Low Hazard of Flooding
21.	Sunnyslope Elementary	Unknown		High Ground Shaking Low Hazard of Flooding High Fire Hazard Severity Zone

22.	Troth Street Elementary	Unknown		High Ground Shaking Low Hazard of Flooding
23.	Van Buren Elementary	Unknown		High Ground Shaking High Hazard of Flooding
24.	VanderMolen Elementary	Unknown		High Ground Shaking High Hazard of Flooding
25.	West Riverside Elementary	Unknown		High Ground Shaking Low Hazard of Flooding
Transportation				
26	Blue Rhino	Unknown		High Ground Shaking Low Hazard of Flooding
27	Flabob Airport	Unknown		High Ground Shaking Low Hazard of Flooding
28	Pedley Metrolink Station	Unknown		High Ground Shaking Low Hazard of Flooding Moderate Fire Hazard Severity Zone
Fire Protection				
1	Riverside County Fire Department CAL-FIRE Station 16	Unknown		High Ground Shaking Low Hazard of Flooding
2	Riverside County Fire Department CAL-FIRE Station 17	Unknown		High Ground Shaking High Hazard of Flooding
3	Riverside County Fire Department CAL-FIRE Station 18	Unknown		High Ground Shaking Low Hazard of Flooding Very High Fire Hazard Severity Zone
4	Riverside County Fire Department CAL-FIRE Station 38	Unknown		High Ground Shaking Low Hazard of Flooding Very High Fire Hazard Severity Zone
Water				
1	Jurupa Community Services District 11201 Harrel Street, Jurupa Valley, CA 91752	Unknown		High Ground Shaking High Hazard of Flooding
2	Jurupa Community Services District 4150 Etiwanda Ave., Jurupa Valley, CA 91752	Unknown		High Ground Shaking Low Hazard of Flooding
3	Rubidoux Community Services District 3590 Rubidoux Blvd. Jurupa Valley, CA 92509	Unknown		High Ground Shaking Low Hazard of Flooding
Other Government Facilities				
1	Eddie D Smith Senior Center 5888 Mission Blvd, Jurupa Valley, CA 92509	Unknown		High Ground Shaking Low Hazard of Flooding
2	Western Riverside and City Animal Shelter 6851 Van Buren Blvd Jurupa Valley, CA 92509	Unknown		High Ground Shaking High Hazard of Flooding Moderate Fire Hazard Severity Zone
3	Robidoux Library 5840 Mission Blvd. Jurupa Valley, CA 92509	Unknown		High Ground Shaking Low Hazard of Flooding
4	California Family Life Center 5656 Mission Blvd Jurupa Valley, CA 92509	Unknown		High Ground Shaking Low Hazard of Flooding
5	Jurupa Family Health Center 9415 Mission Blvd Jurupa Valley, CA 92509	Unknown		High Ground Shaking High Hazard of Flooding
6	Jurupa Unified School District Administrative Building 4850 Pedley Road	Unknown		High Ground Shaking

	Jurupa Valley, CA 92509			
7	Jurupa Area Recreation & Park District Community Center & Admin Building 4810 Pedley Rd. Jurupa Valley, CA 92509	Unknown		High Ground Shaking
8	JARPD Veteran's Memorial Park 4390 Riverview Dr. Jurupa Valley, CA 92509			High Ground Shaking

4.4 IDENTIFICATION OF RISKS AND VULNERABILITIES

The jurisdictions were asked to rate the potential and severity using a scale of between 0 and 4 (4 being the most severe). The jurisdictions were also asked to rank the listed hazards as they relate to their jurisdiction (1 being the highest overall threat to their jurisdiction). Please see Riverside County MJHMP Section 5 for past occurrences of hazards affecting Jurupa Valley.

1. Flood – Severity –3, Probability –3, Ranking-1

The Santa Ana River is normally a small meandering slow moving water system which becomes a raging river whenever there is substantial rainfall. The City is working in conjunction with Riverside County Flood Control & Water Conservation District to identify and mitigate areas that may cause or have the potential to cause damage or destruction of property.

Heavy rain events can also lead to problems with storm drainage systems and create localized flood problems. According to the City of Jurupa Valley Storm Drain Master Plan, there are several flooding problem areas in the City. These areas are primarily a result of undersized pipes where the runoff exceeds the pipe capacity even for minor storms. Compounding the storm water run-off, the geological features of Jurupa Valley is that everything slopes in a southwesterly direction. Storm water from the City of Riverside and surrounding areas northeast of Jurupa Valley are draining westward into Jurupa Valley storm water facilities. (Please see Riverside County MJHMP Section 5.3.9)

2. Earthquake - Severity –4, Probability –3, Ranking-2

City of Jurupa Valley is located in a Seismic Hazard Zone. The nearest active earthquake fault is the San Andreas Fault located on the northern part of the city.

In the past, Jurupa Valley has experienced tremendous and damaging earthquakes in December 1899 and in April 1918. The quakes each had magnitudes of approximately 6.6 on the Richter scale and caused substantial damage to existing buildings, including several deaths related to the events. There have been several noticeable ground movements in recent years, most notably the Landers and Big Bear earthquakes in 1992,

and the Northridge earthquake in 1994, but no local damage was sustained during these more recent events. (Please see Riverside County MJHMP Section 5.3.1).

3. Wild Fire - Severity –3, Probability –4, Ranking-3

A Wildfire is an uncontrolled fire spreading through vegetative fuels, posing danger and destruction to property. Wildfires can occur in undeveloped areas and spread to urban areas. The City of Jurupa Valley is in a High Fire Hazard Zone and has potential impact due to the vegetation in the Santa Ana River bottom. The Community Services District is responsible for the maintenance to remove the vegetation. (Please see Riverside County MJHMP Section 5.3.3).

5. Severe Weather- Heat/Wind/Cold - Severity –2, Probability –4, Ranking-4

The City of Jurupa Valley utilizes the local Jurupa Area Recreation and Parks District community centers as cooling stations working closely with Riverside County Office of Emergency Services during severe heat events.

Severe Weather: The city has not recently experienced a severe heat related weather event. (Please see Riverside County MJHMP Section 5.3.13).

6. Technical Hazards - Severity –4, Probability –2, Ranking-5

Along with the potential for death and injuries from large-scale motor vehicle accidents, there is the potential for hazardous material spills or fires as numerous commercial transportation vehicles travel intra-city roadways with various types and quantities of hazardous materials, fuels, and chemicals. (Please see Riverside County MJHMP Section 5.3.14).

6. Drought - Severity –3, Probability –2, Ranking-6

Although the City of Jurupa Valley has never experienced a severe drought event, the city has established an ordinance to manage general public water usage, to include irrigation restrictions during severe weather related events. (Please see Riverside County MJHMP Section 5.3.11).

7. Agricultural Hazards - Severity –4, Probability –2, Ranking-7

A small area of Jurupa Valley is dedicated to agricultural businesses. Production of fruits, vegetables, flowers/trees, sod, and other produce items are grown within the city. Crop losses in the surrounding area due to hazards have economic impacts in Riverside County. Some of the businesses in jurisdiction are agricultural based including other dairy/poultry industry related businesses which have a substantial impact on the city's

economy; to include Riverside County in general. Our agriculturally based economy is vulnerable to freezes, heat waves, flooding, and insect infestations.

Any time a hazard-related event results in reduced crop or product production, the City of Jurupa Valley is negatively impacted by loss of revenue to major businesses, to include labor force reductions. The associated unemployment affects the crime rate, housing market, local businesses, and the City’s sales tax revenues. (Please see Riverside County MJHMP Section 5.3.13.5)

SECTION 5.0 – COMMUNITY RATING SYSTEM

5.1 REPETITIVE LOSS PROPERTIES

There are zero repetitive loss properties in the City of Jurupa Valley reported to date.

5.2 NATIONAL FLOOD INSURANCE PROPERTIES

a. **Describe participation in NFIP, including any changes since previously approved plan.**

The City is compliant with the NFIP Program. We will provide NFIP Brochures to residents within the High Flood Zones and also during outreach events.

b. **Date first joined NFIP.** 9/23/13

CID	COMMUNITY NAME	INIT FHBM	INIT FIRM IDENTIFIED	CURR EFF MAP DATE	REG-EMER DATE	IDENTIFIED TRIBAL
060286#	JURUPA VALLEY	-	08/18/14	08/18/14	09/23/13	No

c. **Identify actions related to continued compliance with NFIP.**

Initiated CLOMRS for developing properties.

d. **CRS member?** No.

e. **CRS class?** N/A

f. **Describe any data used to regulate flood hazard area other than FEMA maps.**

Engineering studies and consultation with Riverside County Flood Control and Water Conservation District (RCFCWCD).

g. Have there been issues with community participation in the program?

No, we need revised and updated maps.

h. What are the general hurdles for effective implementation of the NFIP?

We currently are waiting for a BAO letter from FEMA for hydrology and hydraulic studies performed for the Santa Ana River by the RCFCWCD.

i. Summarize actions related to continued compliance with NFIP

Distribute map information, participate in development reviews, consult with RCFCWCD.

ii. Repetitive Loss Properties

None. Residents who have property within mapped areas are eligible to purchase flood insurance.

SECTION 6.0 - CAPABILITIES ASSESSMENT

6.1 REGULATORY MITIGATION CAPABILITIES

Capabilities are the programs and policies currently in use to reduce hazard impacts or that could be used to implement hazard mitigation activities. This capabilities assessment is divided into five sections –

- Regulatory Mitigation Capabilities
- Administrative And Technical Mitigation Capabilities
- Fiscal Mitigation Capabilities
- Mitigation Outreach And Partnerships
- Funding Sources

The City of Jurupa Valley is a recently incorporated City and currently working on the development of our own regulatory plans, including:

Regulatory Tool	Yes/No	Comments
General Plan	Yes	Adopted in September 2017, this plan outlines the future changes in the City such as new infrastructure

		that will be built, policies on public safety and land use. This plan will help with the implementation of mitigation actions that are listed in the LHMP.
Zoning ordinance	Yes	Incorporated into Municipal Code
Subdivision ordinance	No	County of Riverside
Site plan review requirements	Yes	General Plan
Growth management ordinance	No	County of Riverside
Floodplain ordinance	No	F.E.M.A.
Other special purpose ordinance (stormwater, water conservation, wildfire)		Efficient Landscape Irrigation Ordinance required by MS4
Building Code	Yes	State code adopted with amendments
Fire Department ISO rating	Yes	BCEGS submitted, pending reply
Erosion or sediment control program	Yes	Informally address sediment issues
Stormwater Management Program		Stormwater Ordinance required by MS4 City Manual
Capital Improvements Plan	Yes	Annual
Economic Development Plan	Yes	
Local Emergency Operations Plan	Yes	
Other special plans		Local Implementation Plan Facilities Management Plan Water Quality Management Plan
Flood Insurance Study or other engineering study for streams		

6.2 ADMINISTRATIVE/TECHNICAL MITIGATION CAPABILITIES

Personnel Resources	Yes/No	Department/Position
Planner/engineer with knowledge of land development/land management practices	Yes	Planning Director/City Engineer
Engineer/professional trained in construction practices related to buildings and/or infrastructure	Yes	City Engineer and Building Official
Planner/engineer/scientist with an understanding of natural hazards	Yes	City Engineer via Contract
Personnel skilled in GIS	Yes	Planning Department
Full time building official	Yes	Building Official
Floodplain manager	No	

Emergency manager	Yes	City Manager and EMS Manager/PIO
Grant writer	Yes	Contract with outside consultant
Other personnel	No	
GIS Data—Land use	Yes	GIS Graphics Technician
GIS Data—Links to Assessor's data	Yes	GIS Graphics Technician
Warning systems/services (Reverse 9-11, outdoor warning signals)	Yes	Disaster Net Radio

6.3 FISCAL MITIGATION CAPABILITIES

Financial Resources	Accessible/Eligible to Use (Yes/No)	Comments
Community Development Block Grants	Yes	
Capital improvements project funding	Yes	
Authority to levy taxes for specific purposes	Yes	With voter approval
Fees for water, sewer, gas, or electric services	Yes	Water
Impact fees for new development	Yes	
Incur debt through general obligation bonds	Yes	With voter approval
Incur debt through special tax bonds	Yes	With voter approval
Incur debt through private activities	No	
Withhold spending in hazard prone areas	n/a	
Other	n/a	

6.4 MITIGATION OUTREACH AND PARTNERSHIPS

The City of Jurupa Valley serves as a host for CERT training with the help of the Riverside County Emergency Management Department. In addition, the City has many volunteers and active Rotary and council outreach meetings. The City of Jurupa Valley is also works with the following agencies: Riverside County Flood Control District (RCFD), Riverside County EDA (RCEDA), Jurupa Community Services District (JCSD), Rubidoux Community Services District (RCSD), Jurupa Area Recreation and Parks District (JARPD), and Santa Ana River Water Co.

The City of Jurupa Valley has a Public Works Department that is in charge of owned infrastructure, like streets, bike lanes, sidewalks, storm drains, and traffic signals. Any mitigation actions that involve retrofitting infrastructure to prevent hazards such as earthquake or fire would fall under this department's responsibility.

6.5 FUNDING OPPORTUNITIES

The City of Jurupa Valley has the same funding opportunities as Riverside County Operational Area. Please refer to Section 7.4 of the Riverside County Multi-Jurisdictional Hazard Mitigation Plan for list of funding sources available.

SECTION 7.0 - MITIGATION STRATEGIES

7.1 GOALS AND OBJECTIVES

The City of Jurupa Valley has created list of Mitigation Strategies and Goals for the primary hazards previously identified.

Goal 1: Implement mitigation policies and strategies contained in the City of Jurupa Valley

Objective 1.1: Implement new development ordinances.

Goal 2: Continue to educate the general public in mitigation, preparedness, response and recovery activities.

Objective 2.1: Continue training city staff on emergency preparedness to include: Emergency Operation Center activities, Emergency Operations Plan through the Standardized Emergency Management System (S.E.M.S.) and the National Incident Management System (N.I.M.S.).

Objective 2.2: Continue to provide general public training on emergency awareness and preparedness through CERT programs.

Objective 2.3: Continue emergency preparedness training activities in coordination with surrounding agencies, special districts, community groups, and school districts.

7.2 MITIGATION ACTIONS

The City has implemented and provided mitigation efforts below in sections 7.2, 7.3, and 7.4 based only on hazards that are considered high priority such as, flood, earthquake, and fire. These efforts include the following:

- The separate water service agencies have installed auxiliary power sources on various municipal water wells and sewer lift stations.

Priority: High

Responsible Dept: JCSD/RCSD

Timeframe: completed

Funding/cost: unknown – funded by other agencies

Hazard: Structural (earthquake)

- The City's Code Enforcement Office proactively responds and enforces city ordinances related to weed abatement violations to reduce fire threat.

Priority: High

Responsible Dept: Building & Safety Department

Timeframe: Ongoing

Funding/cost: unknown

Hazard: Structural (earthquake), flood, and fire.

- The City has remodeled its police station to include a functional Emergency Operation Center (EOC) with alternative power source, internet connections, and media screens to enhance operations.

Priority: High

Responsible Dept: Sheriff's Department

Timeframe: complete

Funding/cost: unknown – funded by other agencies

Hazard: General

- The Police Department / Riverside County Sheriff's Department have mutual aid agreements in place to include valuable resources such as hazardous materials unit, air support, and search and rescue units among others.

Priority: High

Responsible Dept: Sheriff's Department

Timeframe: ongoing

Funding/cost: covered in general funding of contract police services

Hazard: General

New Mitigation Actions:

Type of Hazard	Mitigation Action	Lead Department/Jurisdiction	Status Update	Potential Funding
Flood	<p>Day Creek Channel, Stage 6 Phase 2 Project No. 221-1-8-00250-06-12</p> <p>The project is located in the city of Jurupa Valley, Riverside County and begins within Goose Creek Golf Club, approximately 1,150 lineal feet downstream of Lucretia Avenue. The improvements extend upstream and tie into the existing concrete lined channel located approximately 600 lineal feet downstream of Limonite Avenue. Improvements were made below the existing bridges at Holmes Avenue and 64th Street to provide 100-year storm conveyance capacity.</p>	Riverside County Flood Control	Completed 4/23/13	NA
Flood	<p>Mira Loma - Beach Street Storm Drain, Stage 2 Project No. 221-1-8-00137-01-12</p> <p>The project consisted of approximately 6,800 feet of an underground storm drain, inlets and outlet works. Located along Beach Street between 59th Street and 53rd Street, along Rutile Street, 54th Street and ends at Cedar Street in the incorporated residential area of Mira Loma in the city of Jurupa Valley of Northwestern Riverside County.</p>	Riverside County Flood Control	Completed 9/1/15	NA
Flood	<p>Pyrite Channel Bypass, Pyrite Street Storm Drain, Stage 1 Project No. 221-1-8-00109-01-12</p> <p>This project consists of 1,700 feet of underground storm drain within Pyrite Street in the city of Jurupa Valley. The drain connects Pyrite Street Storm Drain upstream of Pyrite Street to Jurupa Channel</p>	Riverside County Flood Control	Completed 1/16/15	NA
Flood	<p>Jurupa - Pyrite MDP Line A-2 Project No. 1-8-00234 Stage 1</p> <p>Master planned lateral storm drain to Jurupa Channel. Project is east-west drain crossing Agate Street about 1,000 feet south of Jurupa Road. Outlet point at Jurupa Channel is unimproved and likely to remain so</p>	Riverside County Flood Control	30% Plans & R/W Acquisition as of February 2018	Property taxes/Capital Improvement Program

7.3 ON-GOING MITIGATION STRATEGY PROGRAMS

Rubidoux Community Services District is currently designing a new \$2.8 million dollar 6MG water storage tank, a \$10 million dollar sewage conveyance facilities damaged during the 2005 flood, and a \$150,000 water service replacement project.

Priority: High

Responsible Dept: Rubdioux Community Services District (separate agency)

Timeframe: ongoing

Funding/cost: RCSD water restricted capital fund (outside agency)

Hazard: Structural (earthquake), fire

Project #1-Reduce the level of risk to loss of life, personal injury, public and private property damage, economic and social dislocation, and disruption of vital community services that would result from earthquake.

Goal 1: Adopt all of Riverside County Ordinances and Resolution including Land Ordinances. The City has completed this part of the process by adopting and implementing Ordinance No. 2011-01. Additional ordinances are adopted as needed on an ongoing basis to address issues that arise.

Objective: Amend the Building and Zoning Codes to incorporate specific standards for siting, seismic design, and review of Critical Facilities.

Action: Require all new developments, existing critical facilities and structures to comply with the most recent California Building Code seismic design standards.

Priority: High

Responsible Dept: Planning and Building Departments

Timeframe: Ongoing for the life of the plan 2018-2022. This action will be reevaluated during the updating stage of the plan

Funding/cost: Current funding; cost unknown

Hazard: Earthquake

Project #2- Improve the Community Emergency Response Team (CERT) Program in Jurupa Valley to educate people about disaster preparedness for hazards that may impact their area and train them in basic disaster response skills to respond in our community.

Objective: Partner with Riverside County Fire – Office of Emergency Services and neighboring communities to host CERT Trainings.

Action: Build a team of volunteers who are personally prepared for a disaster and provide CERT training for them to respond in our communities.

Priority: High

Responsible Dept: City of Jurupa Valley and Riverside County Fire- Office of Emergency Services

Timeframe: Ongoing for the life of the plan 2018-2022. This action will be reevaluated during the updating stage of the plan

Funding/cost: Homeland Security/Pre-mitigation funding

Hazard: All Hazards

7.4 FUTURE MITIGATION STRATEGIES

Project #1 - Enhanced proactivity in enforcement of vacant land weed abatement

Goal: Reduce risk of wildland fires.

Objective: Focused enforcement of non-compliance.

Action: Direct chief Building Official to increase enforcement priority on vacant land.

Priority: High

Responsible Dept: Code Enforcement

Timeframe: Ongoing for the life of the plan 2018-2022. This action will be reevaluated during the updating stage of the plan

Funding/cost: Current funding; cost unknown

Hazard: Wildland Fires

Project #2 – Local Drainage Flood Control Capital Projects

Goal: Reduce local flooding and road closure incidents.

Objective: Continue focus on improving local drainage issues to mitigate flooding and road closures to protect property and infrastructure.

Action: Prioritize future capital projects focused on mitigating flood risk of flood-prone areas.

Priority: High

Responsible Dept: Engineer/Public Works

Timeframe: Ongoing for the life of the plan 2018-2022. This action will be reevaluated during the updating stage of the plan.

Funding/cost: Current funding; cost unknown

Hazard: Flooding

SECTION 8.0 - PLAN IMPLEMENTATION AND MAINTENANCE PROCESS

Upon adoption and approval by City Council, the Local Hazard Mitigation Plan (LHMP) will be reviewed, evaluated and monitored by LHMP committee members a minimum of once per year. The LHMP committee made up of City staff members and general public representatives will propose revisions to the LHMP. After every review, the committee will provide for a public hearing and submittal to City Council for approval and adoption of such recommendations to the LHMP. If we discover changes have occurred during the evaluation, the City will submit the most current copy to Riverside County Emergency Management Department to submit to Cal OES and FEMA. A comprehensive review, evaluation and update of the LHMP will occur every five years.

The methodology to update the plan will be the following:

- The goals and objectives and address current and expected conditions.
- If the nature, magnitude, and/or type of risks have changed, we will update plan as necessary.
- Current resources for implementing the plan and explore new resources implementation problems, such as technical, political, legal, or coordination issues with other agencies.
- The outcomes to ensure they are in line with the expected outcome, if not we will modify plan.
- Changes in Federal, State and local ordinances, if laws and regulations have changed, we will make changes to reflect current regulations.
- Involve public by posting notices on websites and announcements during public meetings intent to review and update Local Hazard Mitigation Plan allowing for public comment and input.

SECTION 9.0 - INCORPORATION INTO EXISTING PLANNING MECHANISMS

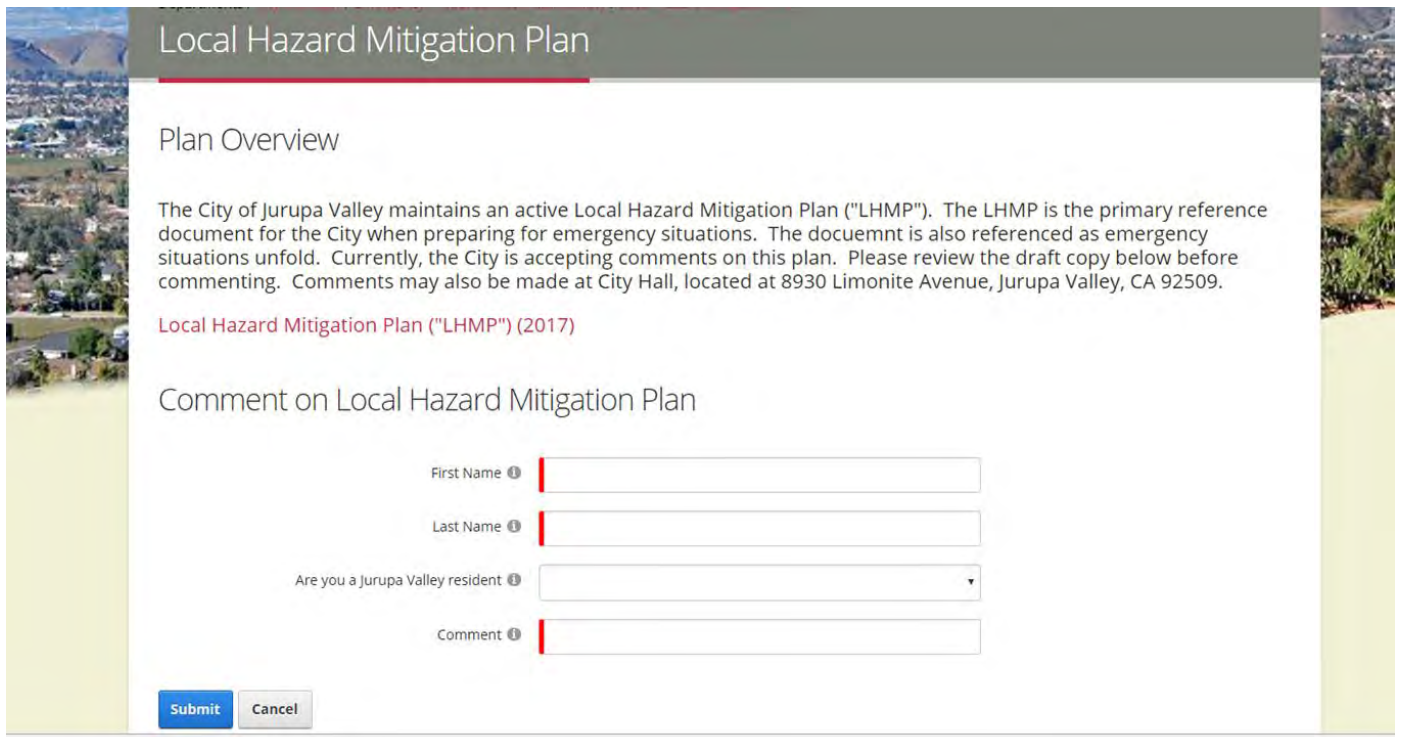
The City of Jurupa Valley will be incorporating mitigation strategies and considerations into the development of their future plans such as a General Plan and Emergency Operations Plan. It is already implemented into the following planning mechanisms:

- Building and Construction Codes
- Fire Codes
- Capital Improvement Plan
- Storm Drain Master Plan
- Stormwater Ordinance required by MS4
- Efficient Landscape Irrigation Ordinance required by MS4
- City Stormwater Procedural Manual
- Local Implementation Plan
- Facilities Management Plan
- Water Quality Management Plan

SECTION 10.0 - CONTINUED PUBLIC INVOLVEMENT

The general public will have access to the Local Hazard Mitigation Plan (LHMP) online via City website with the ability to send comments, or ability to review hard copies available at public areas within City Hall and other city facilities. Approximately every 10-12 months after initial adoption by City Council, the LHMP will be reviewed and evaluated by staff members and general public members represented on the LHMP committee, to review, evaluate and monitor the LHMP, and to evaluate and incorporate all public comments on the Plan.

APPENDIX A – PUBLIC OUTREACH OPPORTUNITIES & JURUPA VALLEY BOUNDARY PLAN MAP



Local Hazard Mitigation Plan

Plan Overview

The City of Jurupa Valley maintains an active Local Hazard Mitigation Plan ("LHMP"). The LHMP is the primary reference document for the City when preparing for emergency situations. The document is also referenced as emergency situations unfold. Currently, the City is accepting comments on this plan. Please review the draft copy below before commenting. Comments may also be made at City Hall, located at 8930 Limonite Avenue, Jurupa Valley, CA 92509.

[Local Hazard Mitigation Plan \("LHMP"\) \(2017\)](#)

Comment on Local Hazard Mitigation Plan

First Name

Last Name

Are you a Jurupa Valley resident

Comment

