

Establishing a Survey Protocol for Marbled Murrelet Using Passive Acoustic Technology (Phase 1): Project Update

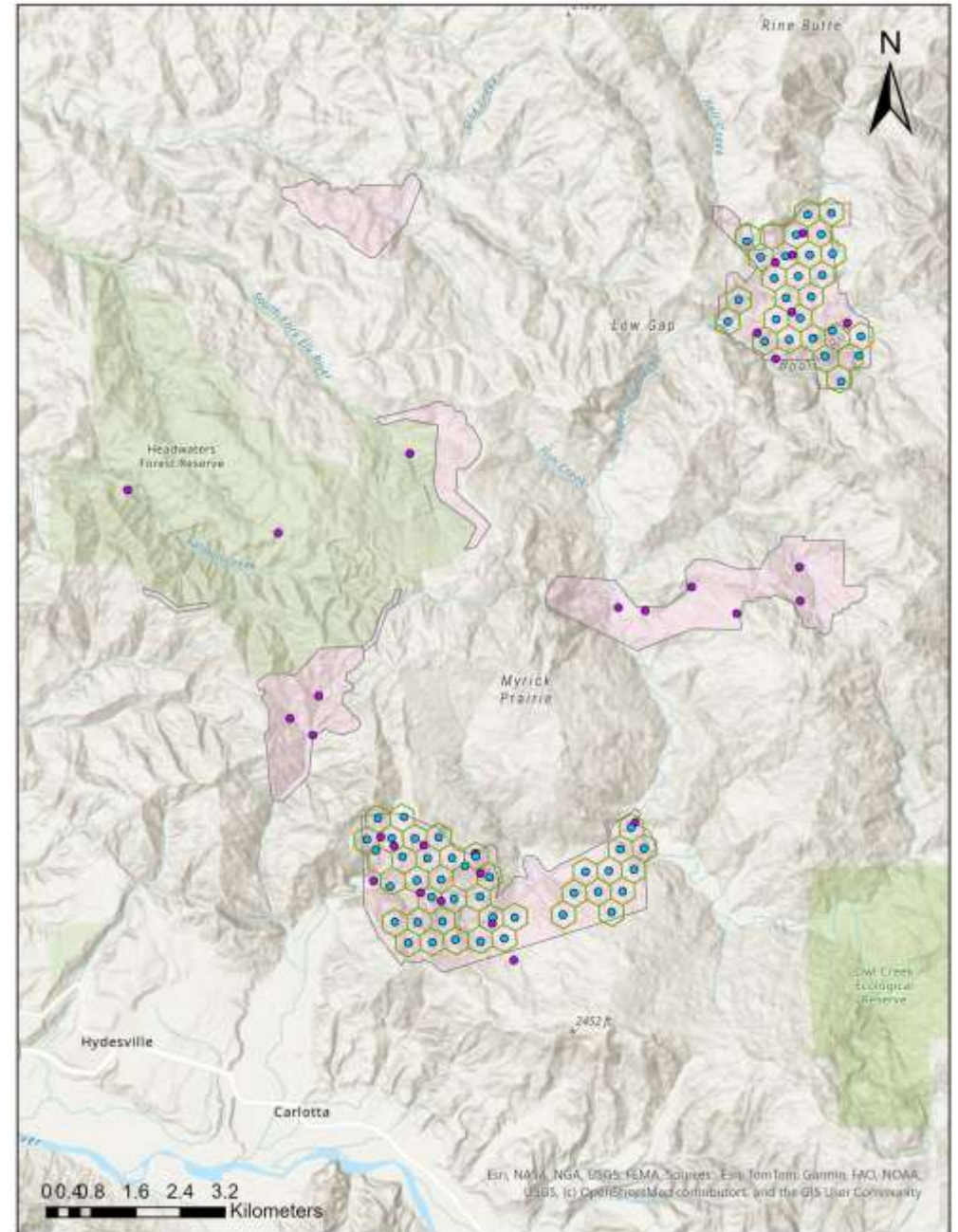
Rylie Strasbaugh

M.Sc. Student, University of Wisconsin - Madison



ARU Deployments in Progress

- **99 SwiftOne Autonomous Recording Units currently deployed on HRC MMCAs (map)**
- **10 SwiftOne ARUs deployed at Jackson Demonstration State Forest**
- **NCASI joined the project, deploying ARUs at sites spanning north from HRC lands to Coos Bay, OR.**



Summary of First Deployment

- Overall, everything went well. All acoustic data from the first deployment (~55,000 hrs) is downloaded from the SD cards and stored.
- Upon revisiting ARUs:
 - A few had missing or chewed windscreens
 - 1 mic chewed off by wildlife
 - 1 unit was stolen



Upcoming Work

- **We start the second round of battery and SD card swaps, soon, kicking off the final deployment of this season**
- **Continue to download and store data, as SD cards are collected**
- **Continue progress on building the custom MAMU BirdNet detector**





Questions?

**Thank you for your time.
Please feel free to reach out
with further questions!**

Email address:

strasbaugh@wisc.edu