

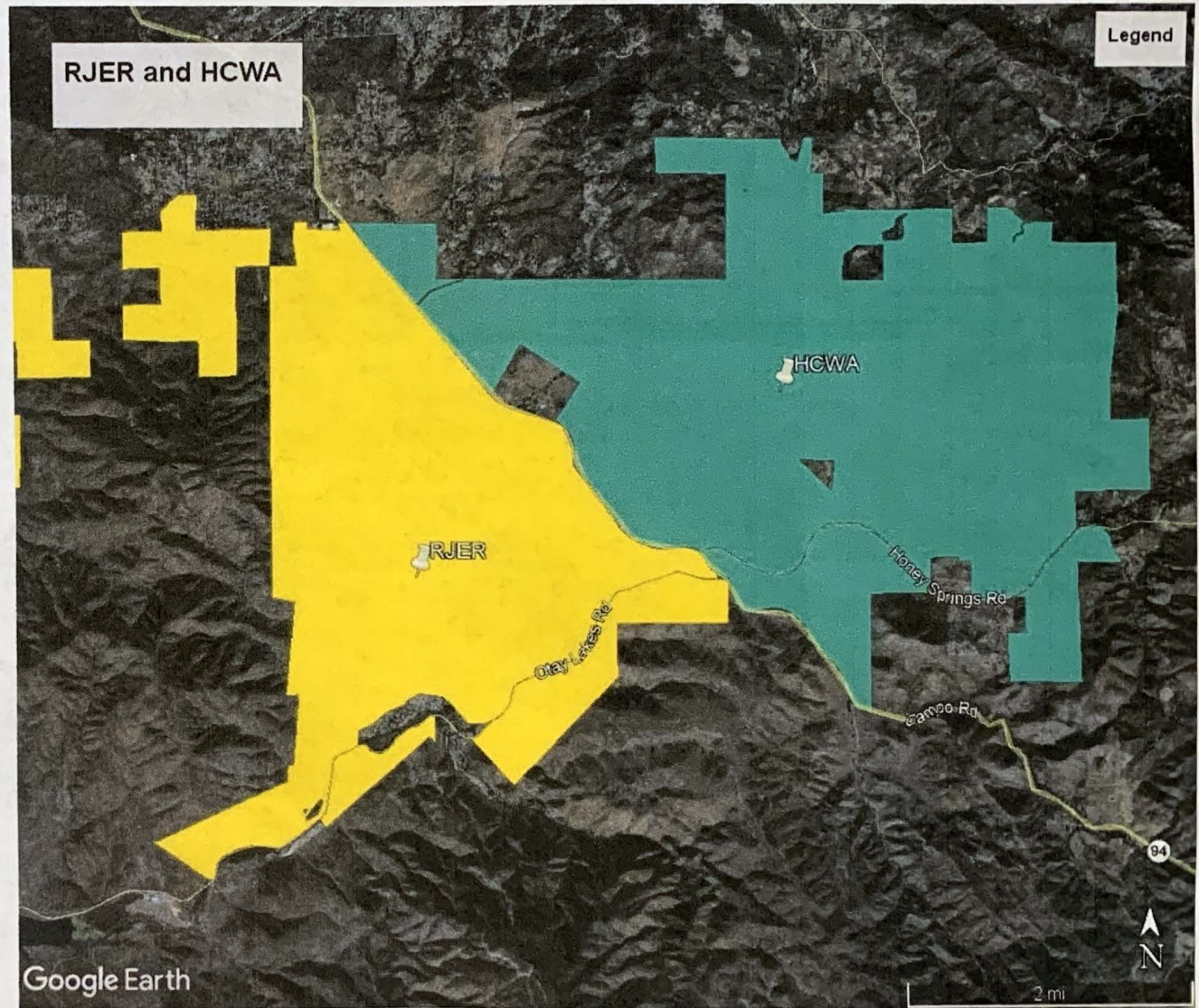
RMAC & BOF EVENT WITH CAL PAC

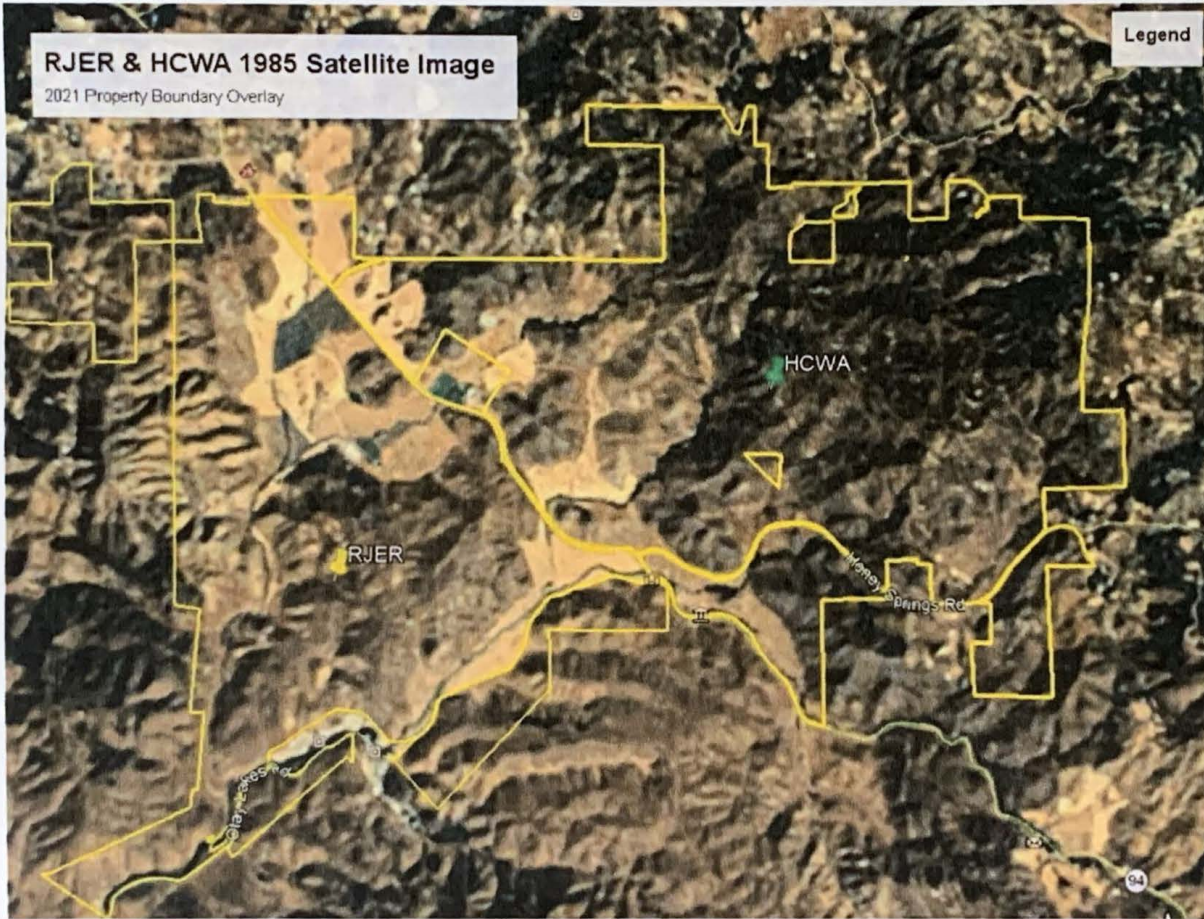
05/08/23

Sustainable Management of Calif's Fire Prone Landscapes
Case Studies from Rancho Jamul & Hollenbeck Canyon Wildlife
Area



DIVIDED BY SR94
OTAY LAKES ROAD





CULTIVATED AREAS
ALONG SR94

GRAZING
THROUGHOUT



OVER 200 YEARS OF
GRAZING

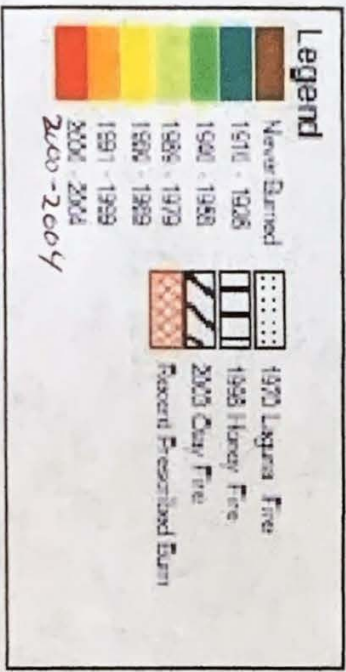
THEN.....



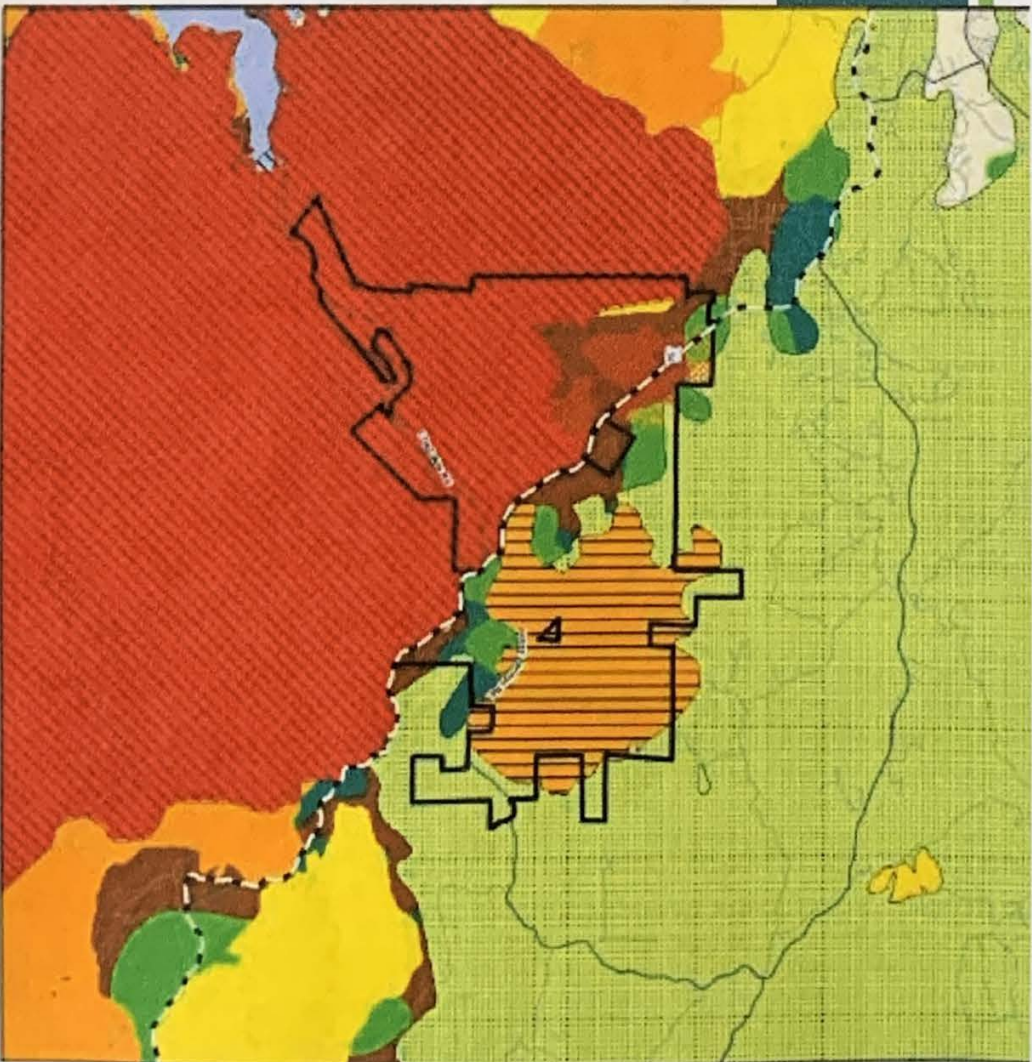


TROPHY CAM

FIRE



2007 - Harris Fire
 most of HCWA Burned
 + part of RSEER





Gate Fire

May 20, 2017

3:32pm



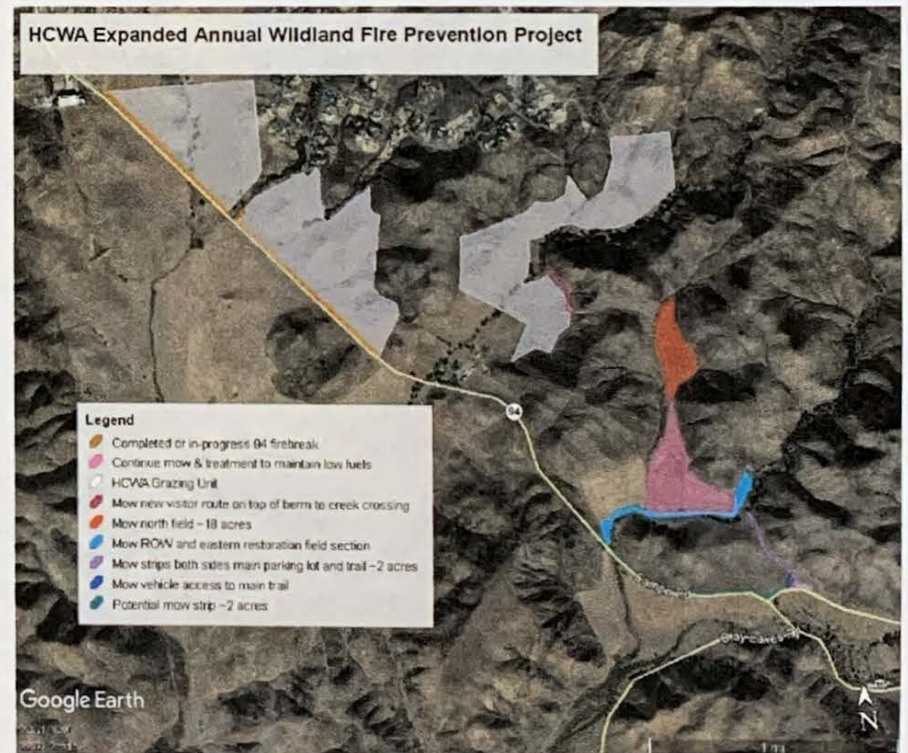
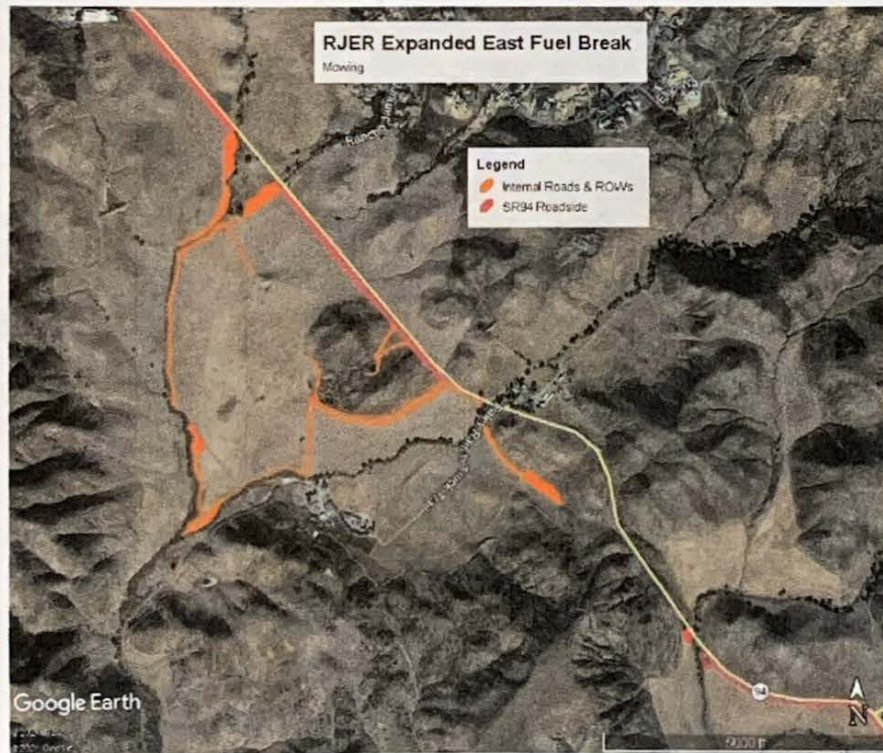
May 20, 2017
3:50pm

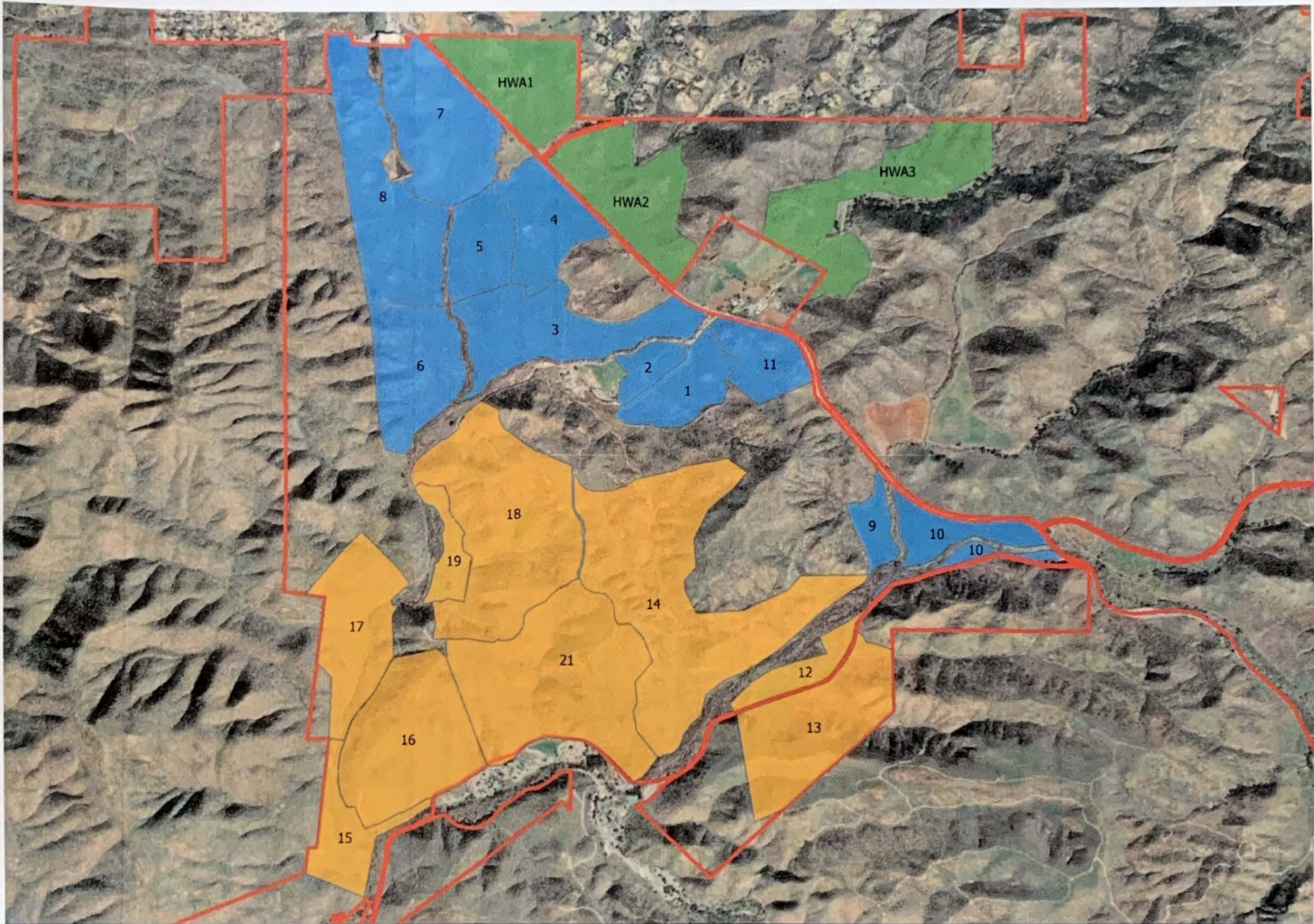
(18 minutes later)





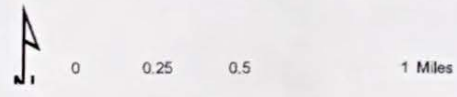
05/21/2017

SB85 EXPANSION OF FUEL BREAKS





 RJER grazing pastures
 HCWA grazing pastures



**Rancho Jamul & Hollenbeck Canyon
Grazing Pasture**

Year 2022-2023 **Grazing Chart**

Pastures	Acres	October	November	December	January	February	March	April	May	June	July	August	September	AUD*	AUD/acre*
1	70													644	9
2	30													920	31
3-4-5	328													3780	12
6	128													810	6
7	162													1617	10
8	201													1283	6
9	30													588	20
10	72													1287	18
11	61													0	0
12	41													273	7
13	229													3847	12
14	388													3780	10
15	60													1958	28
16	195													566	3
17	147													0	0
18	290													1350	5
19	37													1350	36
20	80													4725	4
21	291													2970	16
HW/A1	121													0	0
HW/A2	144													0	0
HW/A3	163													0	0
Total	3283														

*As of April 1, 2023

Supplement or feed	10/1	11/1	12/1	1/1	2/1	3/1	4/1	5/1	6/1	7/1	8/1	9/1	10/1
Type and amount													

100% Natural Protein 14.8% Fat 1.7% Vitamin A 1000 IU/lb 1000 IU/lb 1000 IU/lb

Type of animals	No.	10/1	11/1	12/1	1/1	2/1	3/1	4/1	5/1	6/1	7/1	8/1	9/1	10/1
Cows	118	118	118	118	118	118	118	118	118	118	118	118	118	118
Yearlings	22	22	22	22	22	22	22	22	22	22	22	22	22	22
Stockers	0	0	0	0	0	0	0	0	0	0	0	0	0	0
Bulls	0	0	0	0	0	0	0	0	0	0	0	0	0	0
Total	140	140	140	140	140	140	140	140	140	140	140	140	140	140
Remarks:														

AUDs or Annual Units, are calculated as follows Mature Cow (x1), Yearlings (x0.75), Bull (x1.25), Stockers (x0.5)
 AUDs - Annual Unit Days

USDA INDUSTRY STANDARD STOCKING RATE OR AUM INFO

AUM Definition= 1 AUM is a 2 year old mature cow weighing 1,000-1,400lbs with or without calf that consumes and estimated 26-30lbs of Dry Matter per day.

Mature Cow (2 Years Old) with or without Calf = 1 AUM

Weaned Calf 500Lbs = 0.5 AUM

Yearling Calf above 750lbs = 0.75 AUM

Bull Aprox up to 1,500lbs = 1.2 AUM

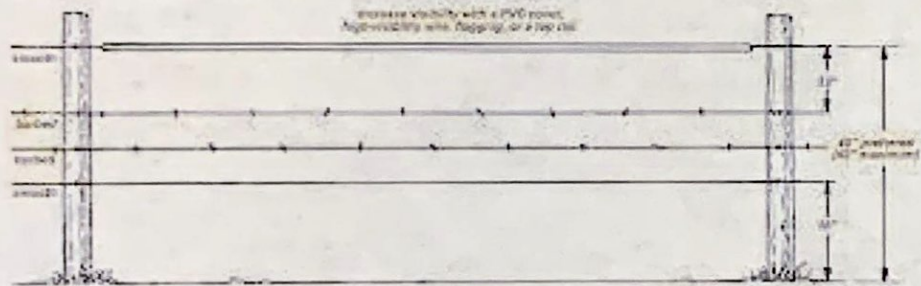
RESTORATION OF EXISTING WELLS



INTERNAL
Fence
only

WILDLIFE FRIENDLY FENCING

IDEAL WILDLIFE FRIENDLY FENCE



The horizontal bottom wire is very stable and allow wild animals to easily jump over or slip under the wires or rails.

WILDLIFE COMPATIBLE FENCING

The graphic includes a vertical strip of four small images: a fence with a person, a fence with a person, a fence with a person, and a fence with a person. Below these is a large image of a deer looking over a fence. At the bottom left is a circular logo with a deer and the text 'Access Lane and the Department'.

https://www.nrcs.usda.gov/Internet/FSE_DOCUMENTS/stelprd_b1118679.pdf



WFF DEER VIDEO

- https://fb.watch/6_67G7tIF/

HCWA # 1 IN PICS 03/29/22



HCWA # 1 Out Pics 04/29/23



HCWA # 1

130 AUM Estimated consumption of 117,000-120,000 lbs of dry matter of light fire fuel vegetation and trampled and additional 134,500 lbs of standing dry matter In front of Urban High Value Homes

Observation Noted: A percentage of vegetation matter trampled is incorporated in the with the soil and not laying on top of the soil increasing soil organic matter which aids in Carbon Storage and Retention of Moisture in the Soil. This eventually aids in the improvement of preferred types of Vegetation and overall Rangeland Conditions

Vegetative Fuel Reduction Activities

Property	Staff Hours	Acres Fuel Reduction
HCWA	8	3.6
HCWA	32	24
PICER	35	1.16
HCWA	19	7
PICER	3	0.6
Central SD	16	1.4
Central SD	12	1.4
Central SD	8	2
Central SD	2	0.01
Central SD	1	0.25
Central SD	5	0.5
Central SD	1	0.1
Central SD	11	2
LA Lands	20	0.2
Central SD	1.2	0.5
Central SD	1	0.16
Central SD	2.6	0.5
Central SD	4.5	3.8
Central SD	6	1.4
Central SD	14	3
Central SD	10	0.1
HCWA	2	250
RJER	5	686
RJER	0.25	77
RJER	0.25	50

Land Management Staff in Acres/Hour

Average Acres /
agency staff

hour	Available Equip & Staff
0.09	Small power tools (weedwhip, brush mower, chainsaw, etc.)
0.55	Small farm tractor with deck or flail mower
141.73	Cattle @ 163 AUM, predominantly non-native annual grassland

Hours it would take to mow
1000 acres post-ag land =

1818 or 227 eight-hour days
5/w or 45 of 52 weeks/yr
or ~1 PY

THE END

