

Noxious Weed Program

The California Department of Food and Agriculture 2022.

Dean Kelch

Environmental Program Manager
Plant Health and Plant Protection Services
CA Dept of Food & Agriculture
dkelch@cdfa.ca.gov

California Department of Food and Agriculture

Weed Management Committee

FAC Sec 7273 (a) The department shall designate and provide staff support to an oversight committee to monitor this article and shall consider input from weed management areas, county agricultural commissioners, and the **Range Management Advisory Committee**.

(b) The membership of the oversight committee shall include an equitable number of representatives from each of the following interests:

- (1) Livestock production.
- (2) Agricultural crop protection.
- (3) Forest products industry.
- (4) California Invasive Plant Council.
- (5) Research institutions.
- (6) Wildlife conservation groups.
- (7) Environmental groups.
- (8) Resource conservation districts.
- (9) The general public.
- (10) Local government.
- (11) The Department of Fish and Wildlife.

(Amended by Stats. 2014, Ch. 271, Sec. 4. (AB 2402) Effective January 1, 2015.)

Noxious Weed Grant Funding

Grant Year	Original Dates	Extension	Number of agreements
2019	June 2019-March 2021		31
2020	May 2020-December 2021	March 31, 2023	44
2021	Jan 2021-June 2022	June 30, 2023	55

Unclaimed gas tax funding available as grants to County Agricultural Commissioner offices to control plants listed as Sec. 4500 noxious weeds or A, B or C rated pests.

CDFA Weed Pest Rating List

CDFA Weed Pest Ratings and CCR 4500 Noxious Weeds
as of June 22, 2021

Scientific Name	Common Name	CDFA Pest Rating	CCR 4500 Noxious Weed
A' Rated Weeds			
<i>Alternanthera philoxeroides</i>	alligatorweed	A	x
<i>Arctotheca calendula</i>	capeweed, as fertile or seed bearing plants	A	x
<i>Baccharis halimifolia</i>	sea-myrtle	A	
<i>Carrichtera annua</i>	Ward's weed	A	
<i>Chrysanthemoides monilifera</i>	bitoubush	A	
<i>Clematis vitalba</i>	old man's beard	A	
<i>Crupina vulgaris</i>	bearded creeper	A	x
<i>Dittrichia viscosa</i>	false yellowhead	A	
<i>Echium plantagineum</i>	Paterson's curse	A	
<i>Enchylaena tomentosa</i>	ruby saltbush	A	
<i>Euphorbia hypericifolia</i>	graceful spurge	A	
<i>Euphorbia myrsinites</i>	myrtle spurge	A	
<i>Fallopia</i> spp. (Bohemian, giant, and Japanese knotweeds) see Reynoutria	Bohemian, giant, and Japanese knotweeds	A	x
<i>Galega officinalis</i>	goatsrue	A	x
<i>Geranium lucidum</i>	shining cranesbill	A	

- Rated weeds that have gone through the current Pest Rating Proposal (PRP) system
- Section 4500 Noxious Weed list

CDFA Pest ratings:

https://www.cdfa.ca.gov/plant/regs_pestrating.html

CDFFA Pest Rating Proposal

Pest Rating Proposals and Final Ratings

[HOME](#) [IMAGE CREDITS](#)



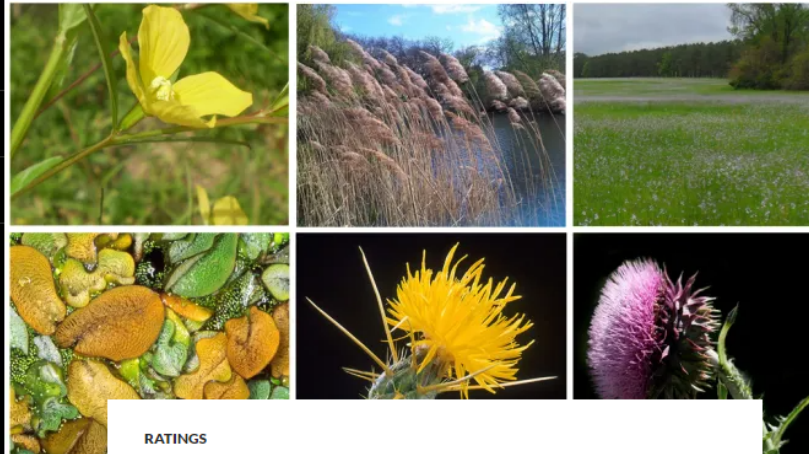
The CDFFA's Plant Health and Pest Prevention Services Division grants the public opportunities to comment on proposed pest ratings. The following type of proposals are available for comment:

[PEST RATING PROPOSALS WELCOME PAGE](#)

[CDFFA'S PEST RATINGS HOME PAGE](#)

CDFFA POLICY LINKS

[CDFFA's Privacy Policy](#)
[Conditions of Use - State of California](#)



RATINGS

WEEDS

🕒 MAY 13, 2016 👤 LISA SERRANO

Paragraph

Weeds are simply an unwanted plant in the wrong place, at the right time. The weeds can directly and indirectly impact agricultural crops and are just as costly to the environment as any other unwanted species.

Weeds are simply an unwanted plant in the wrong place, at the right time. The weeds can directly and indirectly impact agricultural crops and are just as costly to the environment as any other unwanted species.

PEST RATING PROPOSAL:

LINKS

[Insects, Mites & Earthworms](#)

[Nematodes](#)

[Plant Pathogens](#)

[Snails and Slugs](#)

[Vertebrate Pests](#)

[Weeds](#)

[Image Credits](#)

DOCUMENTS

[Pest Ratings and Mitigating Actions, Section 3162 \(PDF\)](#)

[Pest Rating Process | Instructions \(PDF\)](#)

[Pest Rating Proposal Form \(Word Document\)](#)

RESOURCES

[Common Names of Insects and Related Organisms](#)

[California Plant Links:](#)

[California Noxious Weed List](#)


[The Jepson eflora: Most recent manual of California plants with up-to-date names](#)

Regional Weed Prioritization

- Partnership with Cal-IPC through Biodiversity Initiative funding
- Weed species were ranked regional by using current GIS database occurrences and pest rating lists status

Table of Contents

Introduction.....	i
Regional Targets Summaries.....	1



Bay Area.....	1
Central Coast.....	2
Central Sierra.....	3
East Sierra.....	4
North Central.....	5
North Central Valley.....	7
North Coast.....	9
North Sierra.....	10
Northeast.....	11
Northwest.....	12
Sierra San Joaquin.....	13
South Central Coast.....	14
South Central Valley.....	15
South Coast.....	16
South Sierra.....	17
Southeast.....	18
Southwest.....	19


Weed management regions.
Note that boundaries between Southwest and Southeast regions have been updated since this map was produced.

Regional Weed Prioritization

- Input from CAC's and WMA partners on knowledge of species and current control status
- Identified regional priorities for coordination and confirmation/education on historic sites.
- EDRR email notification for priority weeds.

Table of Contents

Introduction.....	i
Regional Targets Summaries.....	1
Bay Area.....	1
Central Coast.....	2
Central Sierra.....	3
East Sierra.....	4
North Central.....	5
North Central Valley.....	7
North Coast.....	9
North Sierra.....	10
Northeast.....	11
Northwest.....	12
Sierra San Joaquin.....	13
South Central Coast.....	14
South Central Valley.....	15
South Coast.....	16
South Sierra.....	17
Southeast.....	18
Southwest.....	19



Weed management regions.
Note that boundaries between Southwest and Southeast regions have been updated since this map was produced.

Regional Weed Prioritization

Regional Target	CAC Target	CAC Target	CAC Target	CAC Target	CAC Target	CAC Target	Species	Common Name	%Qs Regio	#Qs Regio	#Q's CAC	#Q's CAC	#Q's CAC	#Q's CAC	#Q's CAC	#Q's CAC	#Pops Regio	CDFA Rating	Cal-IPC Rating
control			no		control		Linaria dalmatica ss	Dalmatian toadfl	1%	1	0	0	1	0	0	0	2	A	Moderate
no			no			no	Arctotheca calendul	fertile capeweed	1%	1	0	0	1	0	0	1	0	A	Mod-Alert
no			no				Salvinia molesta	giant salvinia	1%	1	0	0	1	0	0	0	0	A	High
control				yes - new	yes - new		Carduus nutans	musk thistle	1%	1	0	0	0	1	0	0	0	A	Moderate
control		no		control	yes - new		Onopordum acanth	Scotch thistle	1%	1	0	1	0	0	1	0	0	A	High
no			no				Zygophyllum fabagc	Syrian beancaper	1%	1	0	0	1	0	0	0	1	A	Watch
no		no			no		Alhagi maurorum	camelthorn	1%	2	0	2	0	0	1	0	0	A	Moderate
							Hydrilla verticillata	hydrilla	1%	2	0	1	0	1	1	0	0	A	High
control			no	yes - new			Limnobium spongia	South American s	1%	2	0	0	1	1	0	0	0	A	High
no			no	no		no	Alternanthera philo	alligator weed	4%	7	0	0	6	1	0	1	4	A	High
control	no	no			control		Carduus acanthoide	plumeless thistle	5%	9	4	5	0	0	2	0	2	A	Limited
control	no	no	no	yes - new	control		Centaurea stoebe s	spotted knapwee	6%	11	1	1	1	0	8	0	0	A	High
control	no	no	no	yes - new	no	no	Centaurea diffusa	diffuse knapwee	9%	16	6	6	1	1	7	2	0	A	Moderate
no			no				Centaurea sulphure	sulphur knapwee	1%	1	0	0	1	0	0	0	10	B	WMA Listed
control	no		no	yes - new		ontainmen	Carthamus lanatus	woolly distaff this	2%	3	1	0	1	0	0	3	0	B	High
control		ontainmen	no	yes - new	control	ontainmen	Solanum eleangifoli	white horsenettle	2%	4	0	0	1	0	0	3	4	B	CAC Listed
no			no		no	no	Tamarix aphylla	athel tamarisk	3%	5	0	0	3	0	0	4	0	B	Limited
no	no		no		no	no	Cortaderia jubata	jubatagrass	6%	11	2	0	6	0	1	5	3	B	High
control		no	no	yes - new	control	ontainmen	Euphorbia oblongat	oblong sounge	6%	12	0	1	1	0	3	8	2	B	Limited

- Identified weeds with limited occurrence data
- Interviews with weed managers on current control activity and reasoning/needs

Regional Weed Prioritization

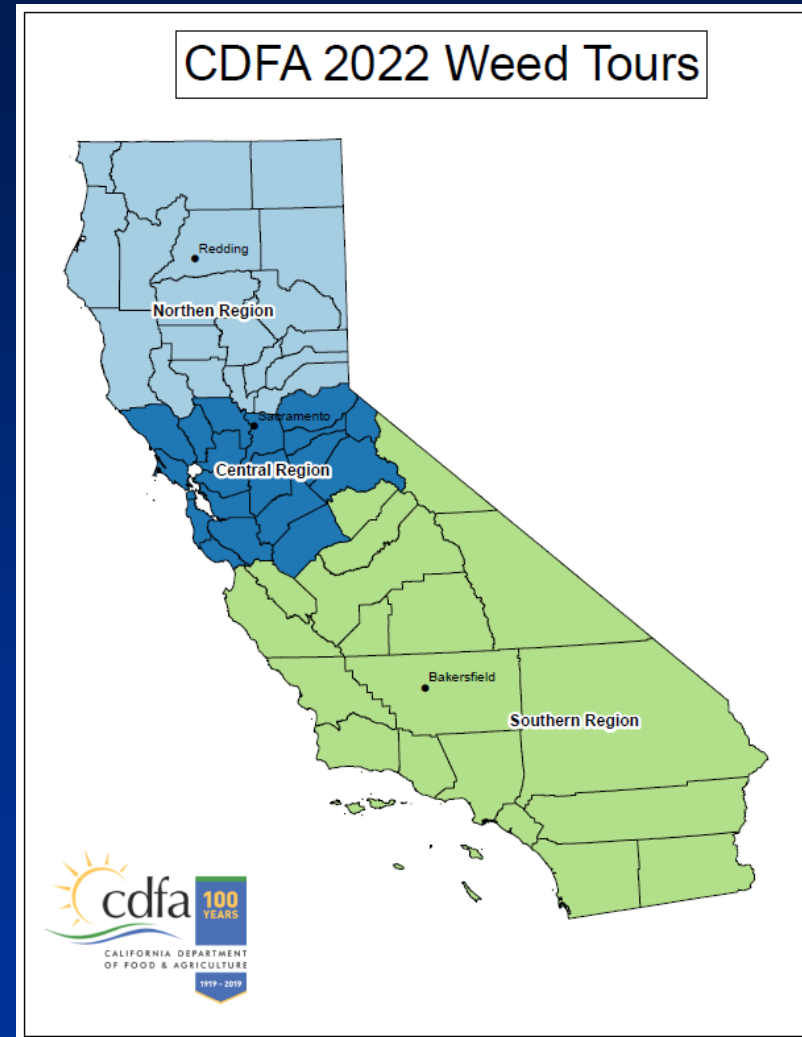
- Producing summaries for CAC and WMA partner Regional Targets

CAC Regional Target	WMA Regional Target	Species	Common Name	CDFA Rating	Cal IPC Rating
Containment	Containment	<i>Chondrilla juncea</i>	skeleton weed	W	Moderate
Containment	Containment	<i>Stipa brachychaeta</i>	punagrass	W	Watch
Containment	Containment	<i>Onopordum acanthium</i>	Scotch thistle	W	High
Control		<i>Cytisus striatus</i>	Portugese broom	B	Moderate
Control		<i>Cynara cardunculus</i>	artichoke thistle	W	Moderate
Control		<i>Cirsium arvense</i>	Canada thistle	W	Moderate
Control*		<i>Tribulus terrestris</i>	puncture vine	W	Limited
Control*		<i>Centaurea calcitrapa</i>	purple starthistle	W	Moderate
Control*		<i>Arundo donax</i>	giant reed	W	High
Control*		<i>Centaurea solstitialis</i>	yellow starthistle	W	High
	Control	<i>Brassica tournefortii</i>	Sahara mustard	C	High

Containment: We do not allow any net spread of this plant.
Control: We control this plant, but not enough for region-wide containment.
Control*: This plant is currently controlled by the majority of counties in the region but not all.
EDRR Priority: Plants found in less than 10% of the region (highlighted in orange).

Weed Tours

- Educational weed tours for County Agricultural Commissioner staff in partnership with UC Cooperative Extension.
- Multiday tours in three separate regions are planned to train staff from neighboring counties on weed identification and mapping systems.





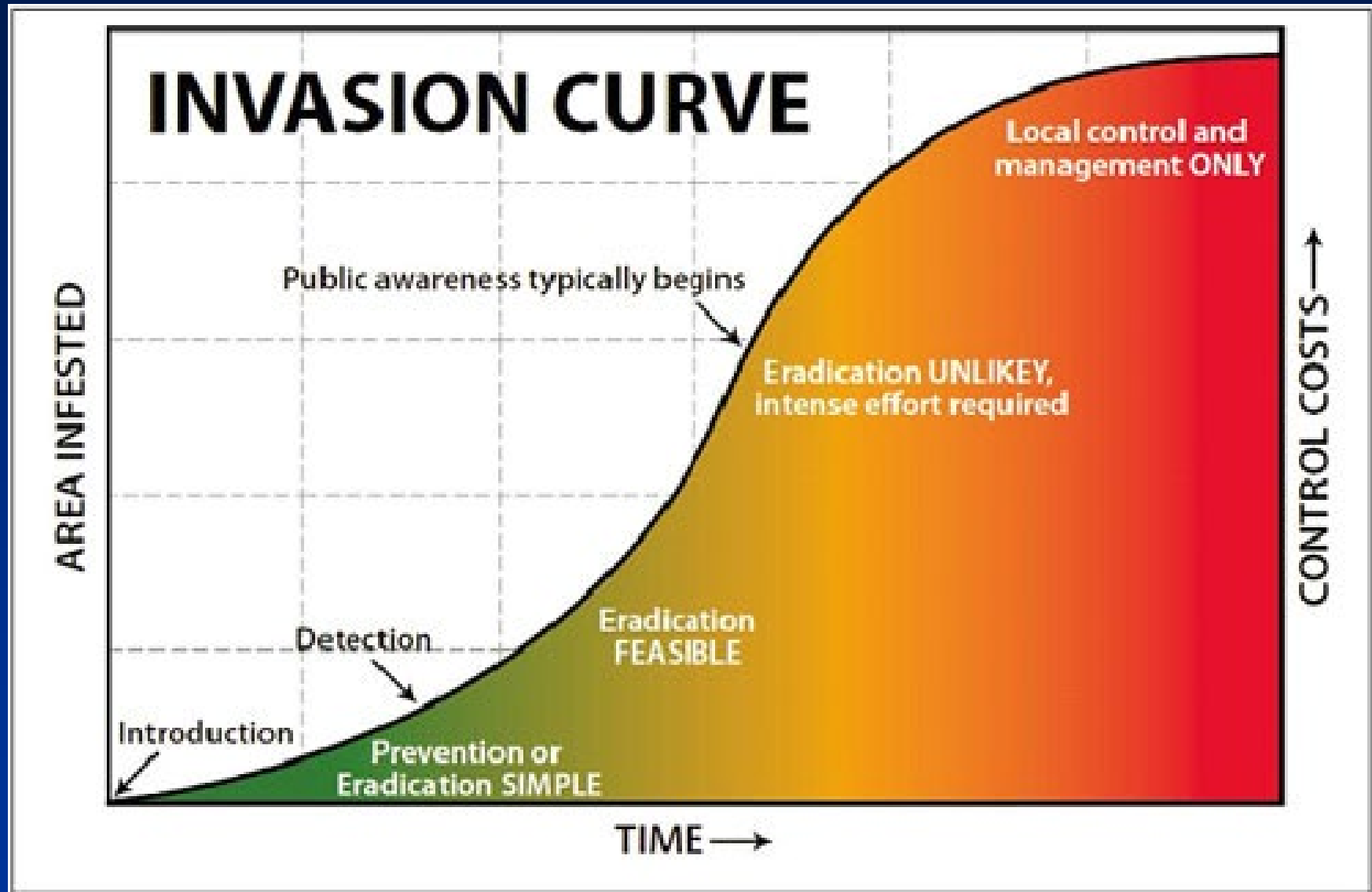
Fertile Capeweed, *Arctotheca calendula*
Individual plants easily removed.

Larger infestations
require harsher
methods and many
years to wear down
long lived seed beds.



Invasion Process

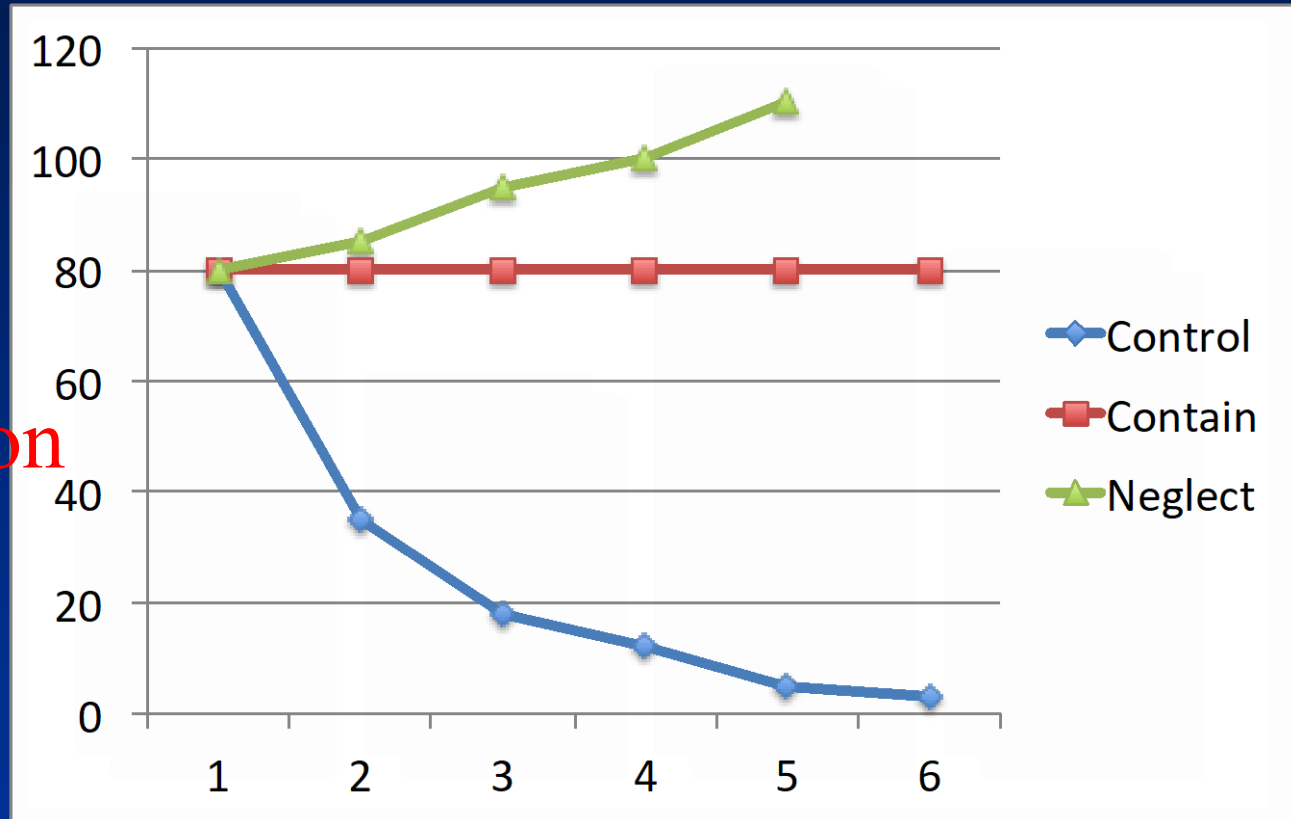
Cal-IPC 2010





Weed Control vs No Weed Control

Weed
Population



Time



Illyrian thistle

Onopordum illyricum



Related to Scotch thistle
Adapted to drier conditions
Known from 1 historic &
1 new locality in CA
Very persistent seed bank:
30 yrs+



Goat's rue
Galega officinalis

Native to Eurasia

Introduced to UT in 1920s

Found 8/13 in Mendocino

Spreading rapidly along a
creek in Lake Co.





Spanish mercury ***Mercurialis ambigua***

Related to dog mercury

Differs in leaf shape,
monoecious

Native to Spain

Often in nursery areas

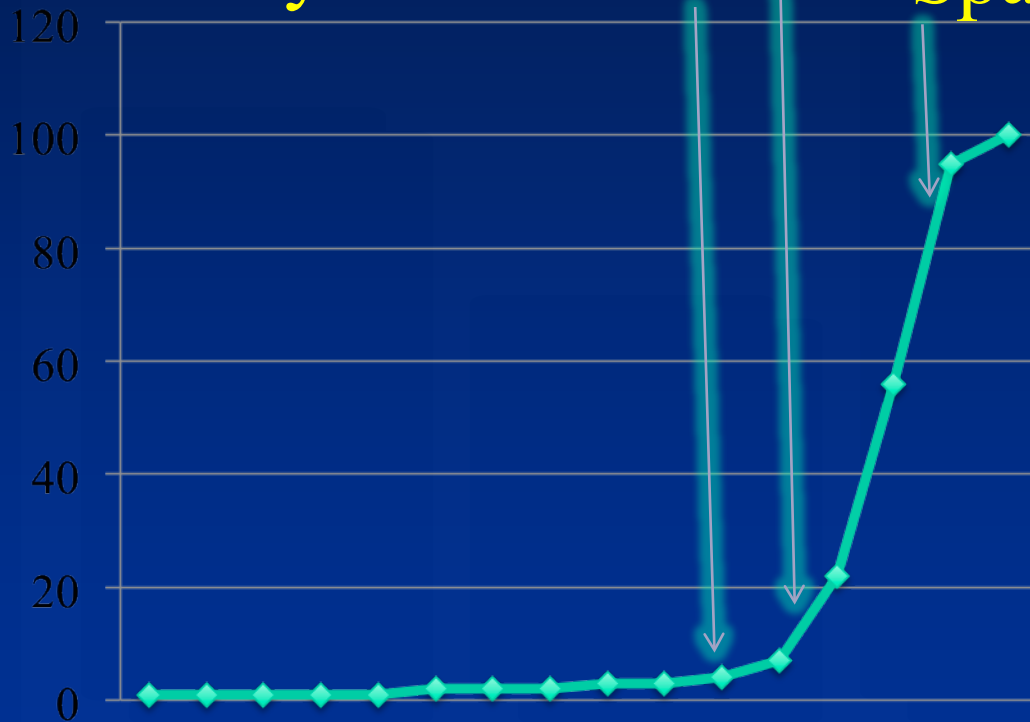
Spread via mulch



Goatsrue

Illyrian Thistle

Spanish Mercury





Artichoke Thistle

*Cynara cardunculus ssp
flavescens*

Wild relative of
artichoke
Adapted to dry
conditions
Noxious in rangeland
Spreads slowly but
inexorably





Scarlet Sesbania

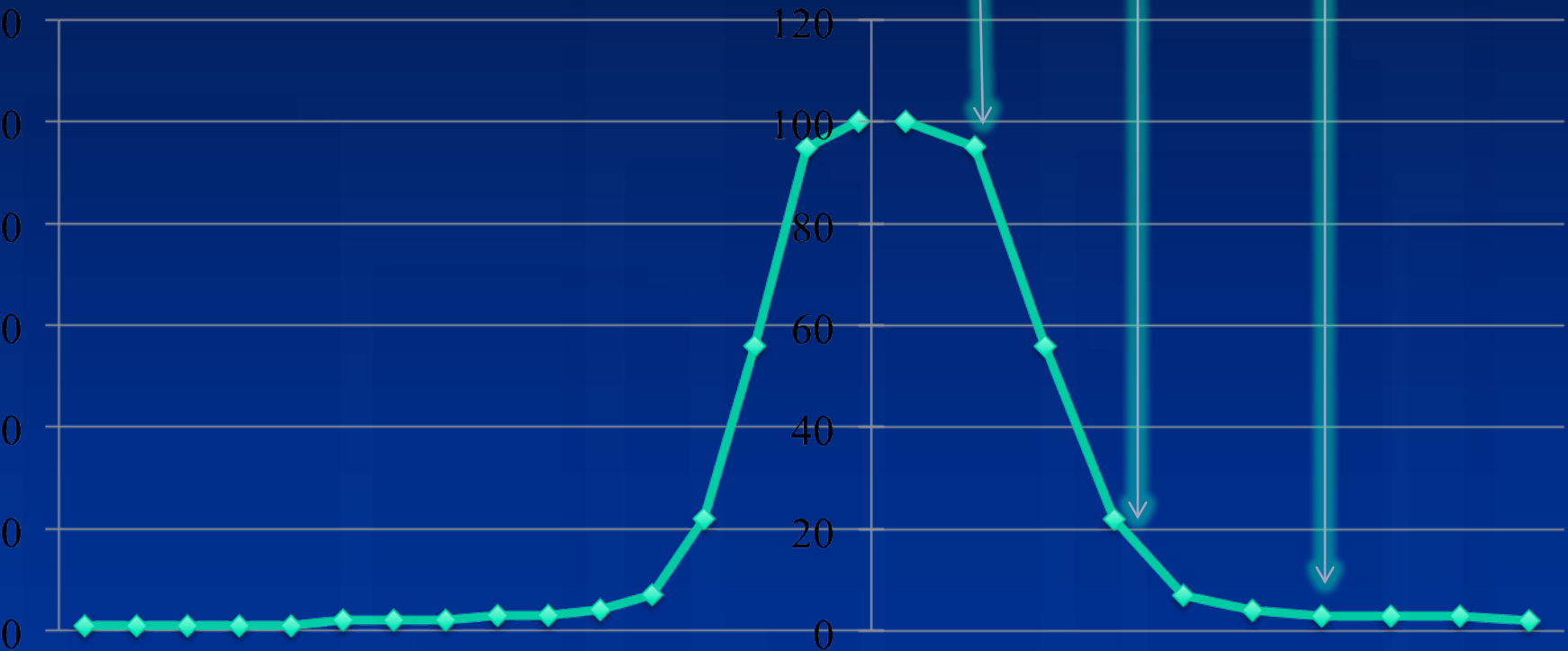
Sesbania punicea

Likes moist soil
Very attractive so often
Treasured by gardeners
Long-lived seed bank
Actively spreading



Managed Weeds in Solano County

Artichoke Thistle
Scarlet Sesbania
Tree-of-Heaven



Thank you

Dean Kelch, PhD

Environmental Program Manager

CDFA/PHPPS

Permits and Regulation/

Environmental Compliance/ PDAS

Phone: (916) 261-9252

dean.kelch@cdfa.ca.gov