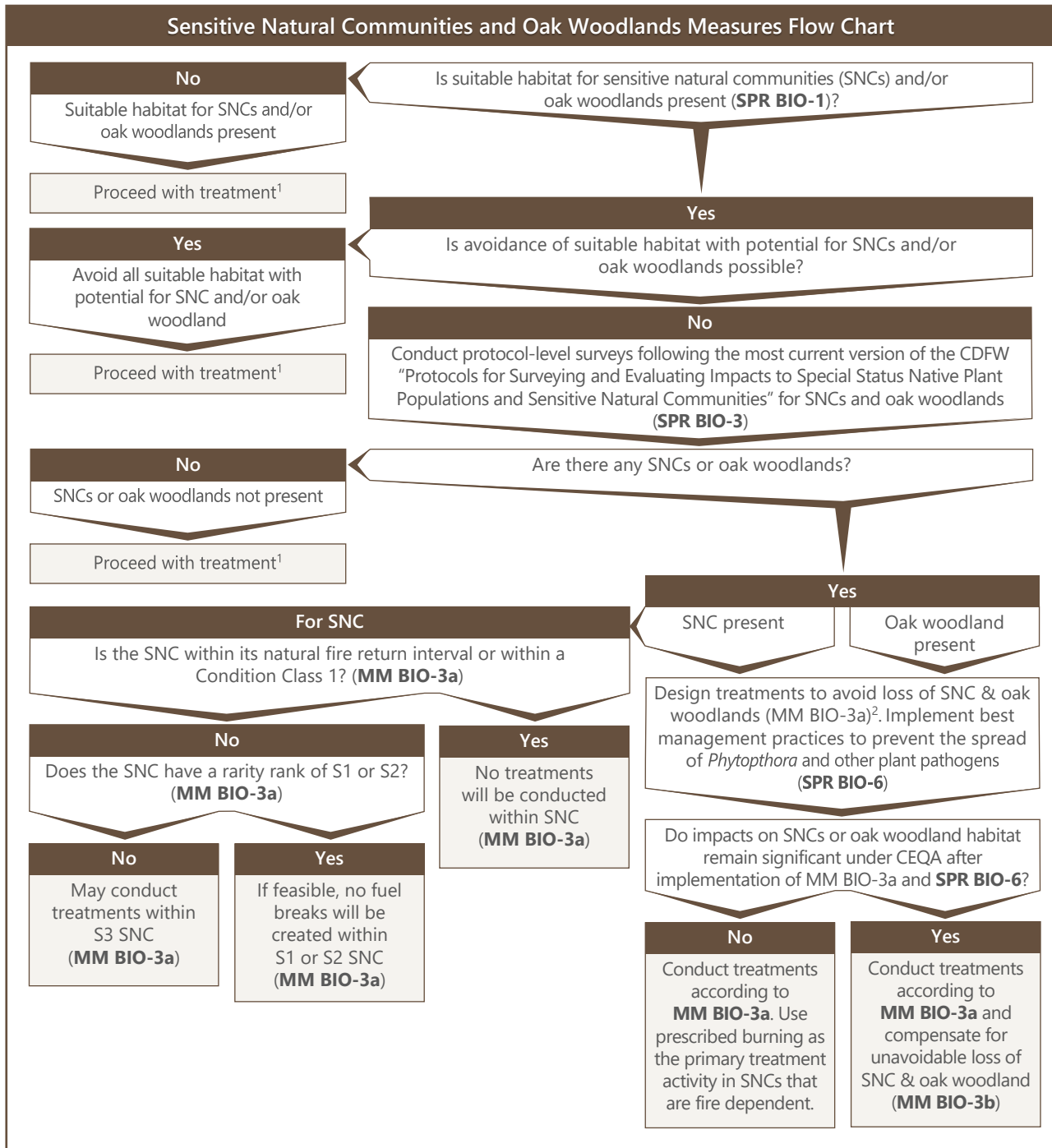


CalVTP MMRP Implementation Tools



¹ Proceed with treatment in compliance with other applicable measures.

² Use prescribed burning as the primary treatment activity in sensitive natural communities that are fire dependent (e.g., closed-cone forest and woodland alliances, chaparral alliances characterized by fire-stimulated, obligate seeders), to the extent feasible and appropriate based on the fire regime attributes as described in Fire in California's Ecosystems (Van Wagendonk et al. 2018) and the Manual of California Vegetation (Sawyer et al. 2009 or current version, including updated natural communities data at <http://vegetation.cnps.org/>).