

P.O. Box 944246
SACRAMENTO, CA 94244-2460
(916) 653-8007
(916) 653-0989 FAX
[BOF Website \(www.bof.fire.ca.gov\)](http://www.bof.fire.ca.gov)



Camping Fee Amendments Staff Memo

CAL FIRE provides for public camping in designated camping areas on four of the Demonstration State Forests (DSFs). Rulemaking to establish camping fees on the DSFs was first completed in 2018 and was undertaken so that the DSFs would have enforceable regulations which allowed them to collect camping fees to help cover the costs of maintaining the campgrounds and other recreation activities.

Following a full year with the initial formal camping fees instated, the DSF managers were able to more accurately keep track of campground use, the total amount of fees collected, and the total costs of maintaining the campgrounds and found that the original \$15 fee with an additional \$5 fee per additional vehicle resulted in significant outstanding costs and that additional support was needed (Table 1). The additional vehicle fee was difficult to enforce leading to the desire for a simpler flat fee per site allowing up to two vehicles. Additionally, increased camping costs in adjacent campgrounds outside of the DSFs (please see the attached maps for reference) resulted in increased use of the facilities, further stretching the financial resources allocated to sustaining the campgrounds.

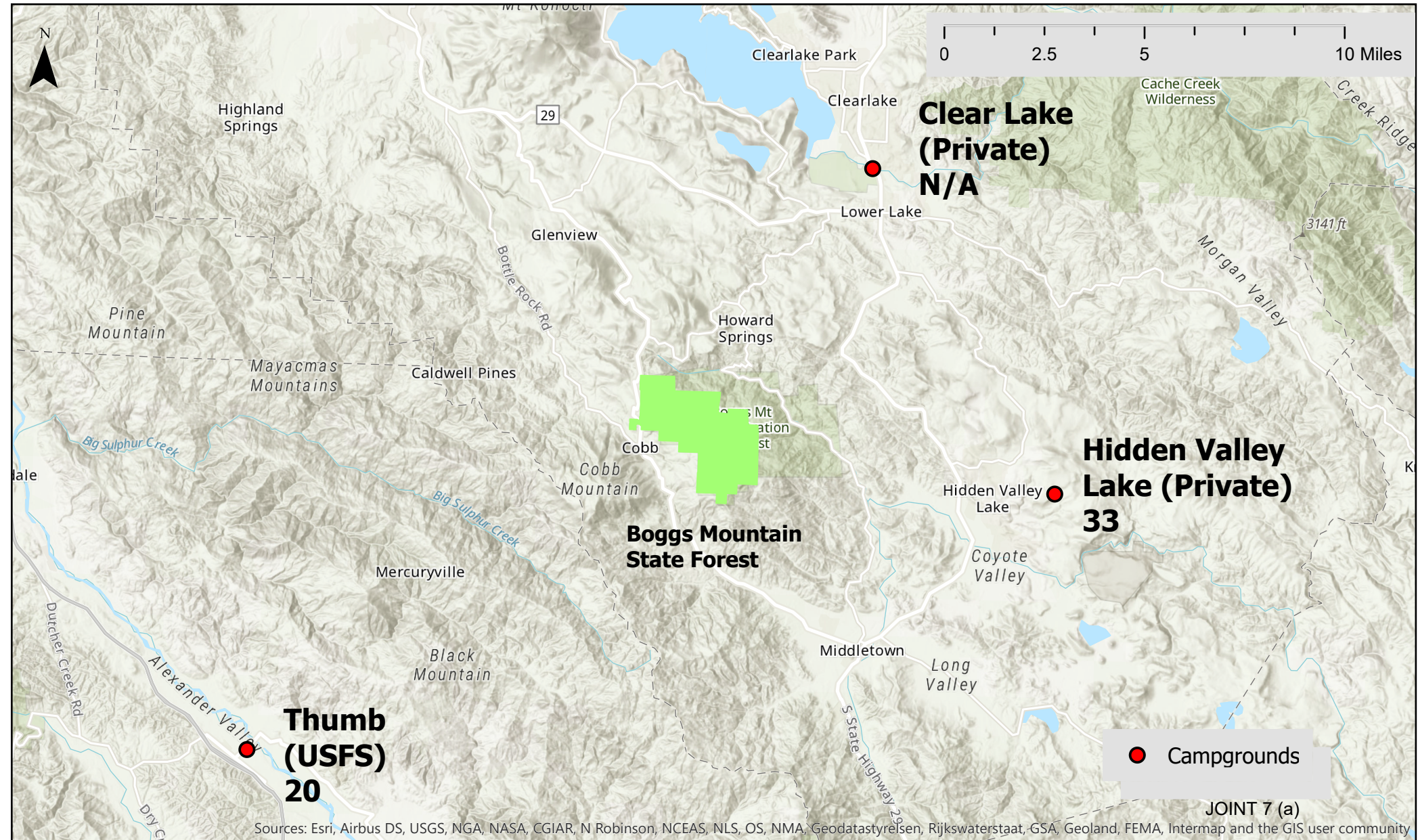
Table 1: Costs of Maintaining Campgrounds on the DSFs

<u>Costs and Revenue</u>	<u>Mountain Home</u>	<u>Boggs Mountain</u>	<u>Jackson</u>
Personnel Costs	\$165,824.00	\$28,632.00	\$62,180.00
Supply Costs	\$70,925.00	\$26,620.00	\$37,400.00
Camping Revenue	\$49,814.50	\$2,500.00	\$32,907.78
Outstanding Costs	\$186,934.50	\$52,752.00	\$66,672.22

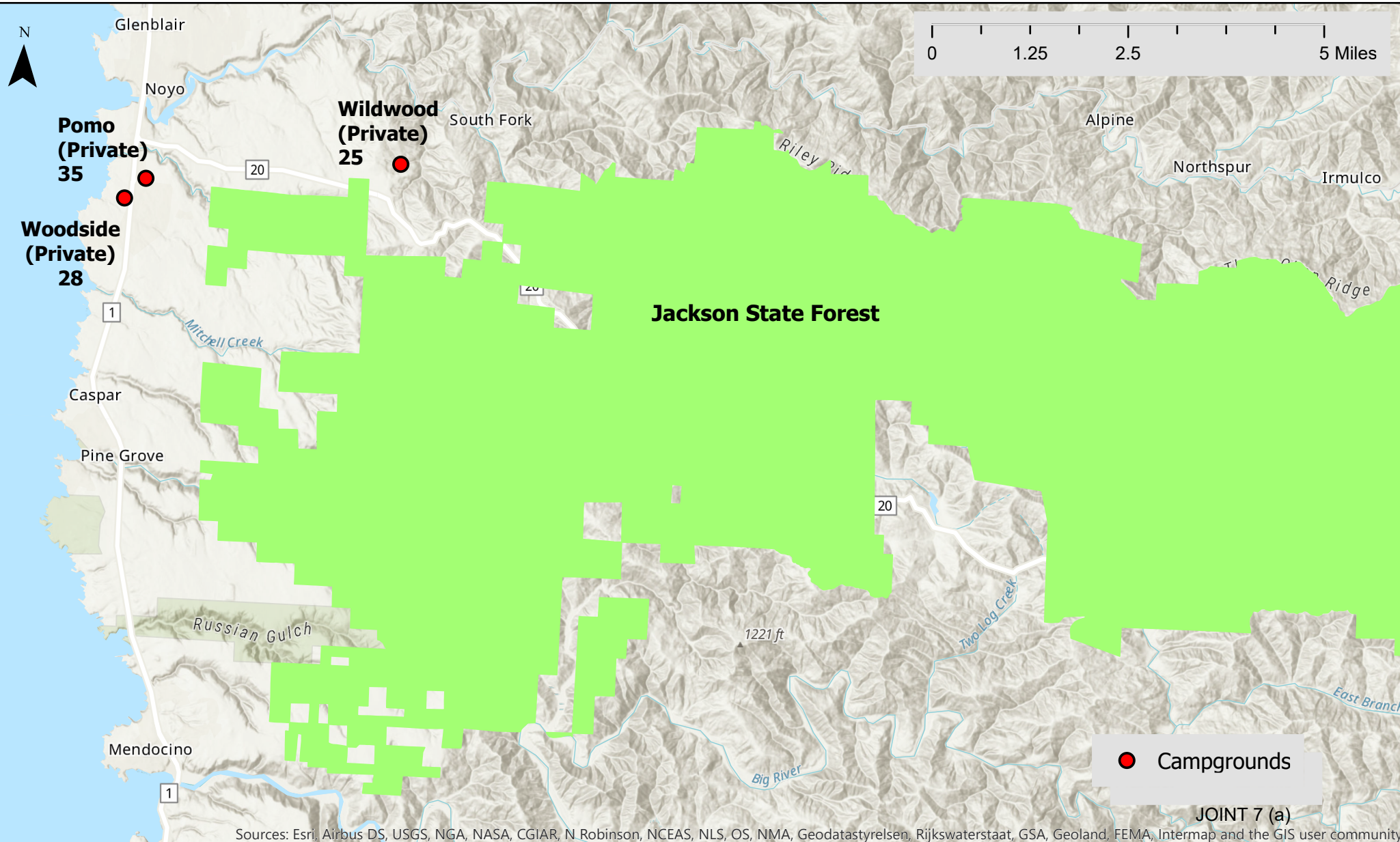
As a result, Mountain Home DSF has requested a \$30 flat fee for campground use and Boggs Mountain and Jackson DSFs have requested a \$25 flat fee for campground use. These fees fall well within the parameters established in PRC 4652 which allows CAL FIRE to “collect recreational user fees for overnight camping and reserved group activities in a demonstration state forest,” provided that these fees do not exceed the cost of maintaining the campgrounds.

Campgrounds and Prices Near Boggs Mountain State Forest

N/A = No dry camping, RV only



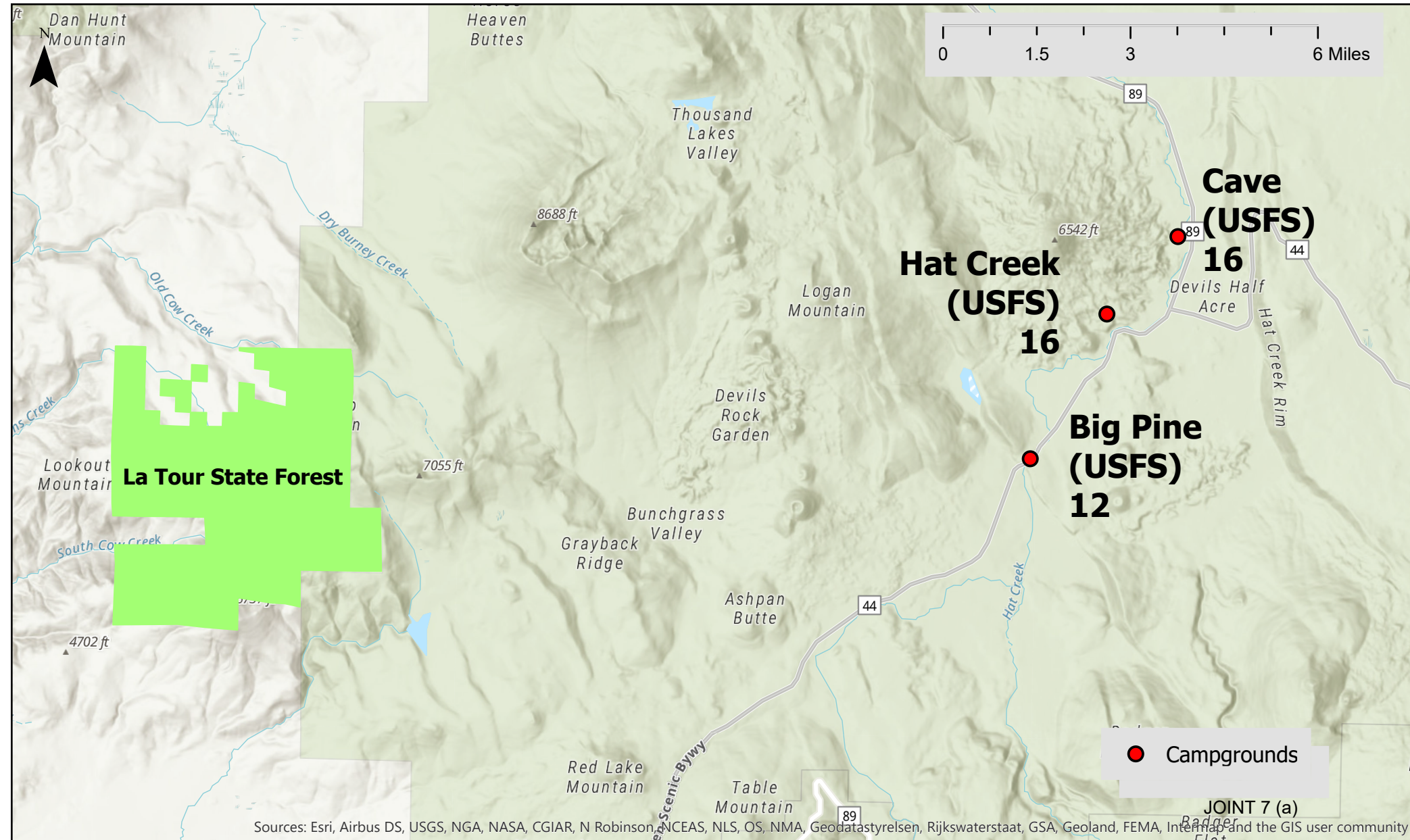
Campgrounds and Prices Near Jackson State Forest



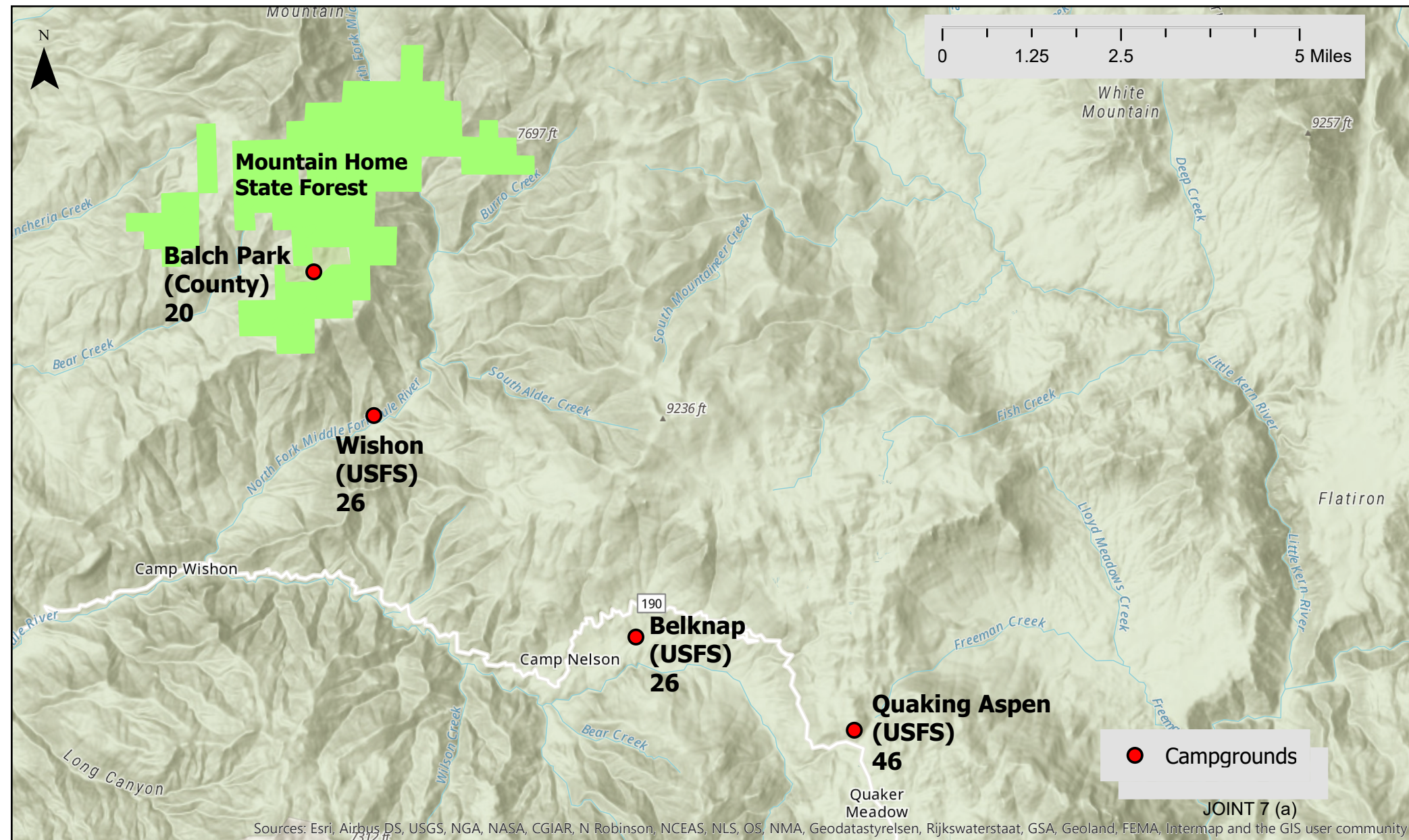
Sources: Esri, Airbus DS, USGS, NGA, NASA, CGIAR, N. Robinson, NCEAS, NLS, OS, NMA, Geodastystyrelsen, Rijkswaterstaat, GSA, Geoland, FEMA, Intermap and the GIS user community

JOINT 7 (a)

Campgrounds and Prices Near La Tour State Forest



Campgrounds and Prices Near Mountain Home State Forest



Campgrounds and Prices Near Soquel State Forest

