



Unit 2020 SRA '5-Year' Review

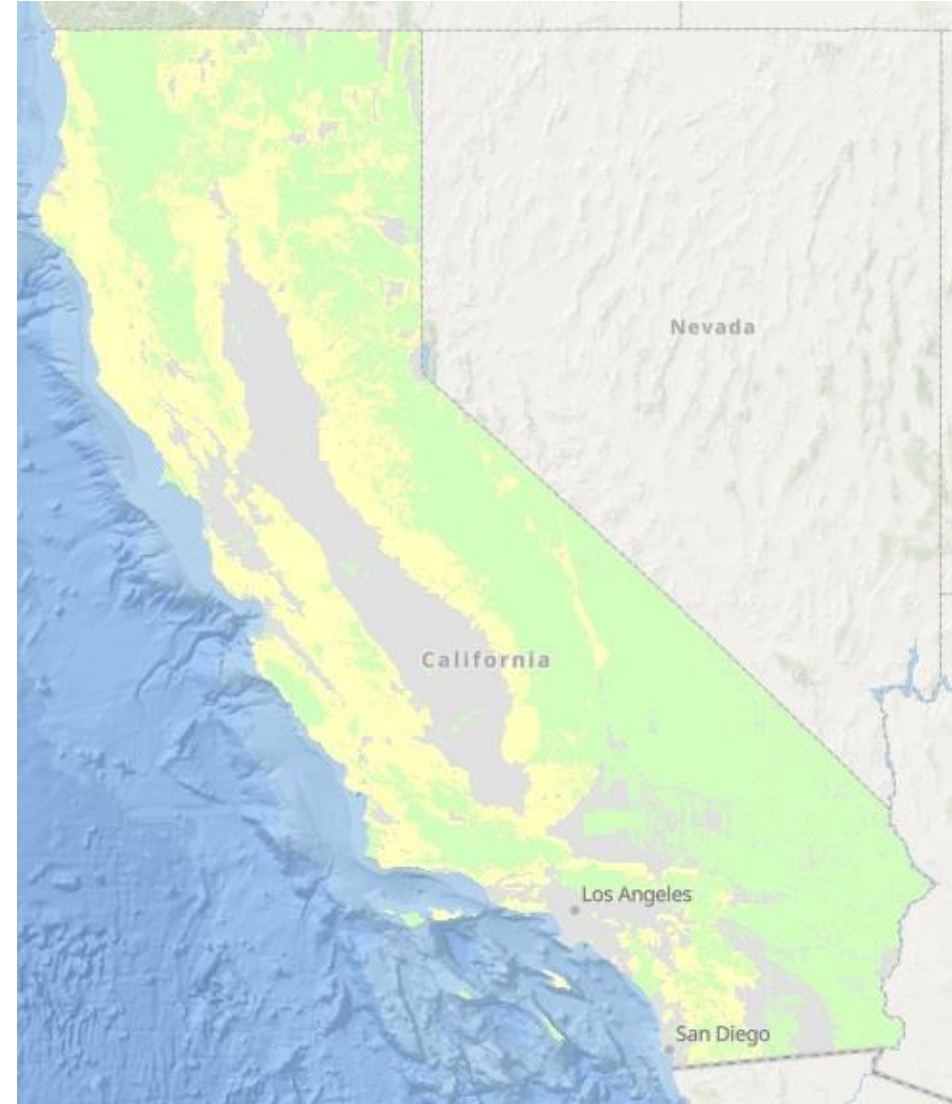
**Board of Forestry
and Fire Protection**

**California Department of
Forestry & Fire Protection**

Office of the State Fire Marshal

08 April 2020

Scott Witt,
Deputy Chief, *CAL FIRE*
Fire Plan
(408) 465-6172 (cell/text)
scott.witt@fire.ca.gov

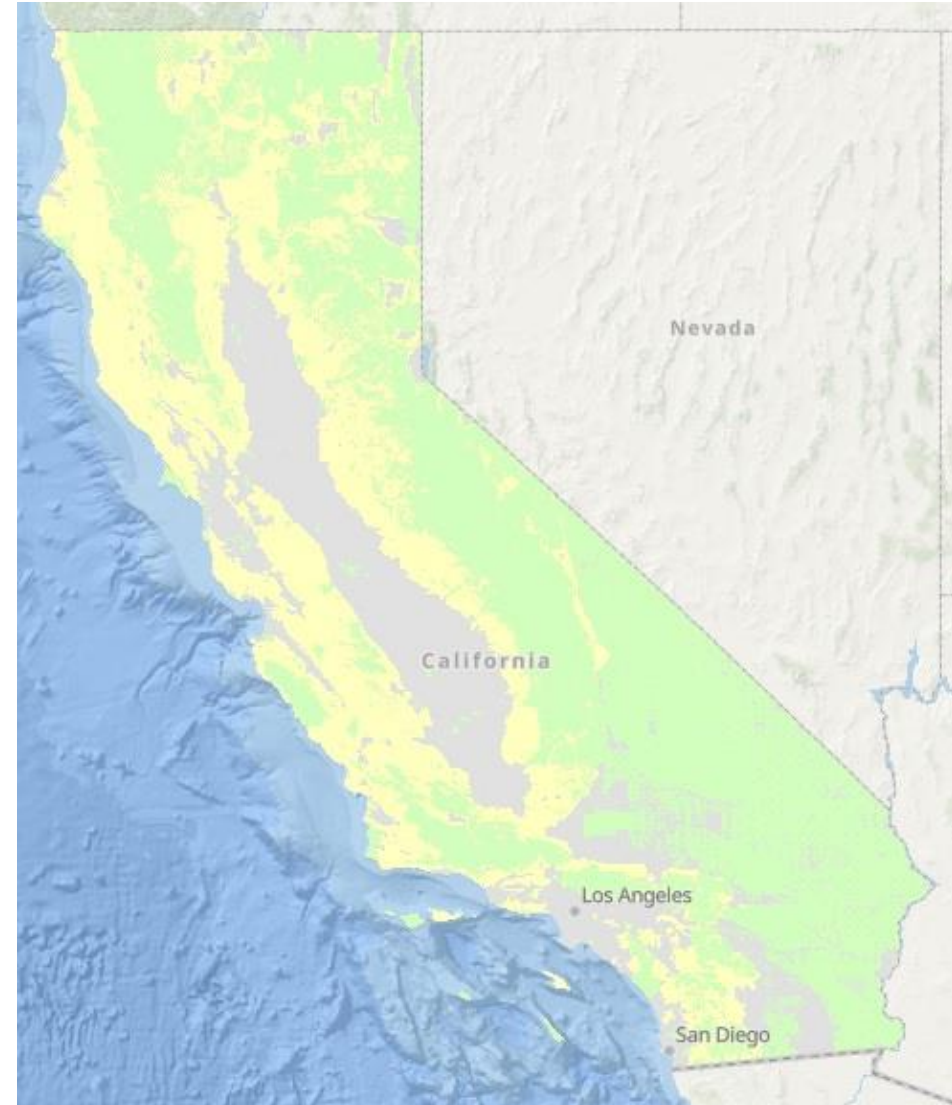




2020 SRA '5-Year' Review

RESPONSIBILITY AREAS

- California is divided into areas assigning the financial responsibility of preventing and suppressing fires:
 - LOCAL = LRA (gray)
 - STATE = SRA (yellow)
 - FEDERAL = FRA (green)
- The State contains about 100m acres, and each Responsibility Area is about 1/3 of the State (33m acres)



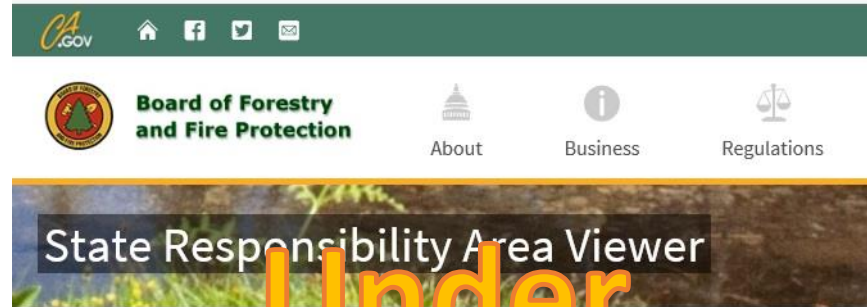
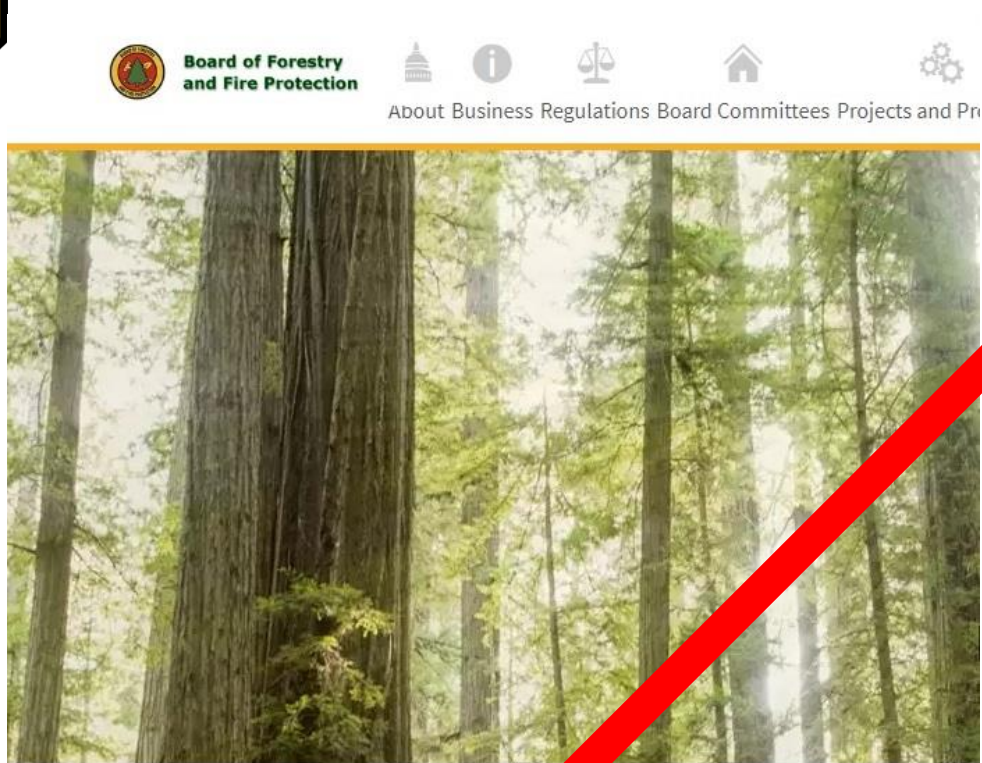


Why is SRA Important?

- CAL FIRE has financial responsibility for preventing [PRC 4137] & suppressing fires
- CAL FIRE has responsibility [PRC 4201 – 4204] for mapping Fire Hazard Severity Zones (FHSZ) and for determining wildfire resilient building standards
- Disclosures for real estate transactions in areas of potential high fire hazards
- SRA Review webpage: <https://bof.fire.ca.gov/>



BOF Website - SRA Review



State Responsibility Areas (SRA) are recognized by the Board of Forestry and Fire Protection as area fire suppression and prevention. The State Responsibility Area Viewer allows users to view SRA spatial data also used to determine fire risk to property in various California counties.

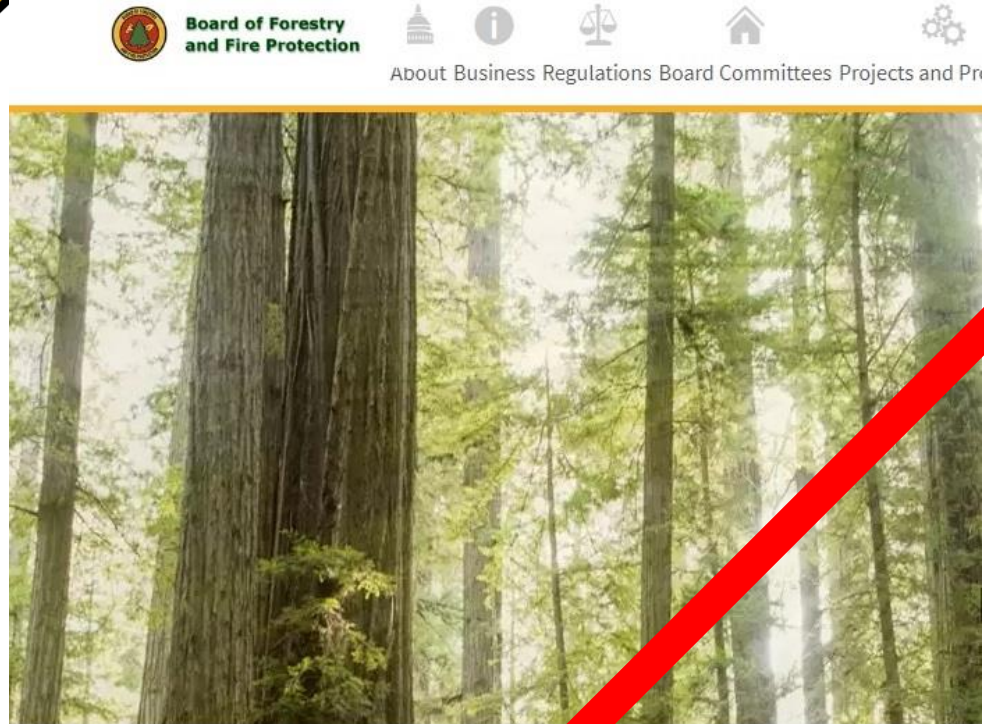


- ★ Hot Topics
- [Get the Latest COVID-19 Updates](#)
- **2020 SRA Classification Review**
- [RPF and CRM Postponement Notice \(PDF\)](#)
- [EMC and RMAC Postponement Notice \(PDF\)](#)
- [Southern Region Forestry Field and RPF Exam Prep](#)

- i What's on Agenda
- [Monthly Binder Mat](#)



BOF Website - SRA Review



★ Hot Topics

- [2020 SRA Classification Review](#)
- [RPF and CRM Postponement Notice \(PDF\)](#)
- [EMC and RMAC Postponement Notice \(PDF\)](#)
- [Southern Region Forestry Field and RPF Exam Prep](#)

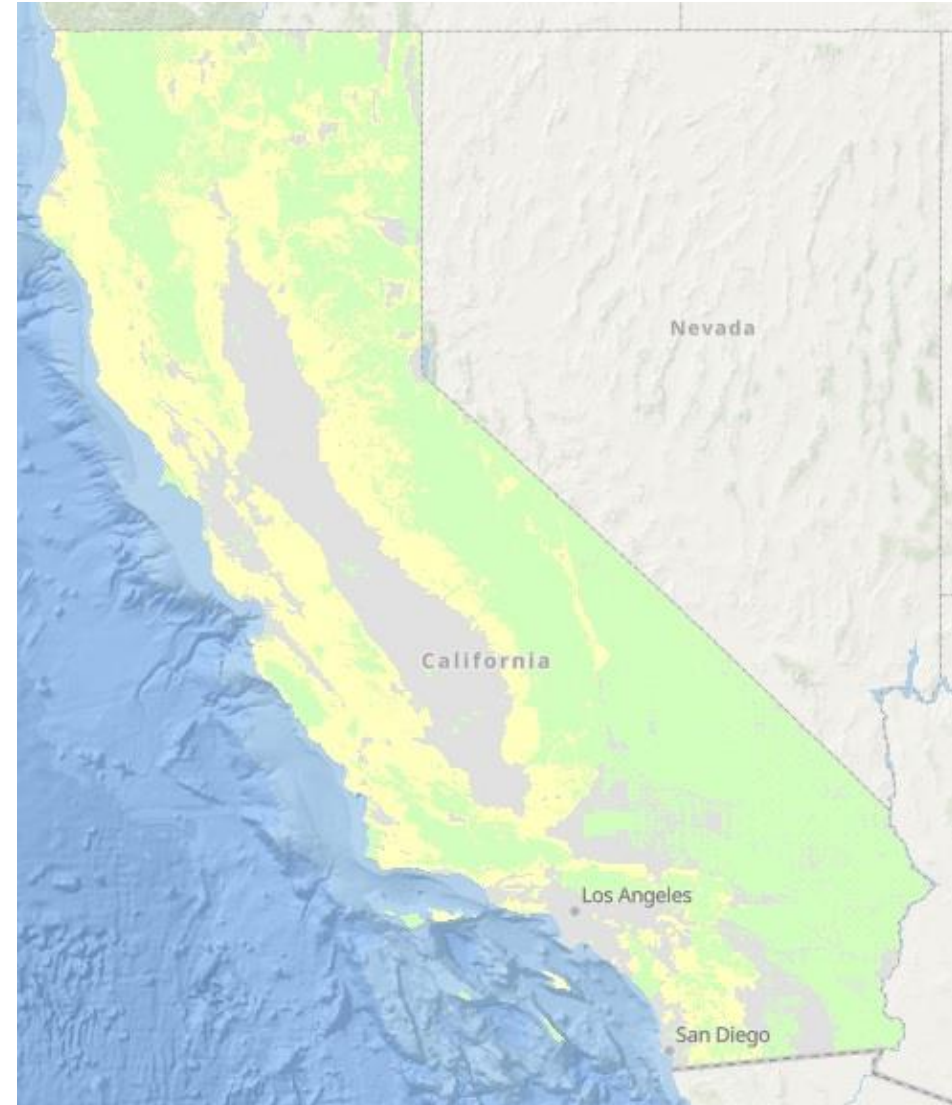
- **Under Construction**
- Maps
- GIS Data
- Frequently asked questions (FAQ)
- Table/list of all changes (99)
- Any other supporting documentation



Legal Basis for SRA

PUBLIC RESOURCE CODE (PRC)

- DIVISION 4. FORESTS, FORESTRY AND RANGE AND FORAGE LANDS [4001 - 4958]
- PART 2. PROTECTION OF FOREST, RANGE AND FORAGE LANDS [4101 - 4789.7]
- CHAPTER 1. Prevention and Control of Forest Fires [4101 - 4205]
- ARTICLE 3. Responsibility for Fire Protection [4125 - 4137]





PRC 4125 (Classification...)

(a) The Board shall classify all lands within the state, without regard to any classification of lands made by or for any federal agency or purpose, for the purpose of determining areas in which the financial responsibility of preventing and suppressing fires is primarily the responsibility of the state...



PRC 4125 (...and review)

(b) On or before July 1, 1991, and every 5th year thereafter, the department shall provide copies of maps identifying the boundaries of lands classified as state responsibility pursuant to subdivision (a) to the county assessor for every county containing any of those lands.

The Department shall also notify county assessors of any changes to state responsibility areas within the county resulting from periodic boundary modifications approved by the board.



PRC 4126 (SRA Definition)

- a) *Lands covered wholly or in part by forests or by trees producing or capable of producing forest products.*
- b) *Lands covered wholly or in part by timber, brush, undergrowth, or grass, whether of commercial value or not, which protect the soil from excessive erosion, retard runoff of water or accelerate water percolation, if such lands are sources of water which is available for irrigation or for domestic or industrial use.*
- c) *Lands in areas which are principally used or useful for range or forage purposes, which are contiguous to the lands described in subdivisions (a) and (b).*



PRC 4127 (Exclusions)

The board shall not include within SRA any of the following lands:

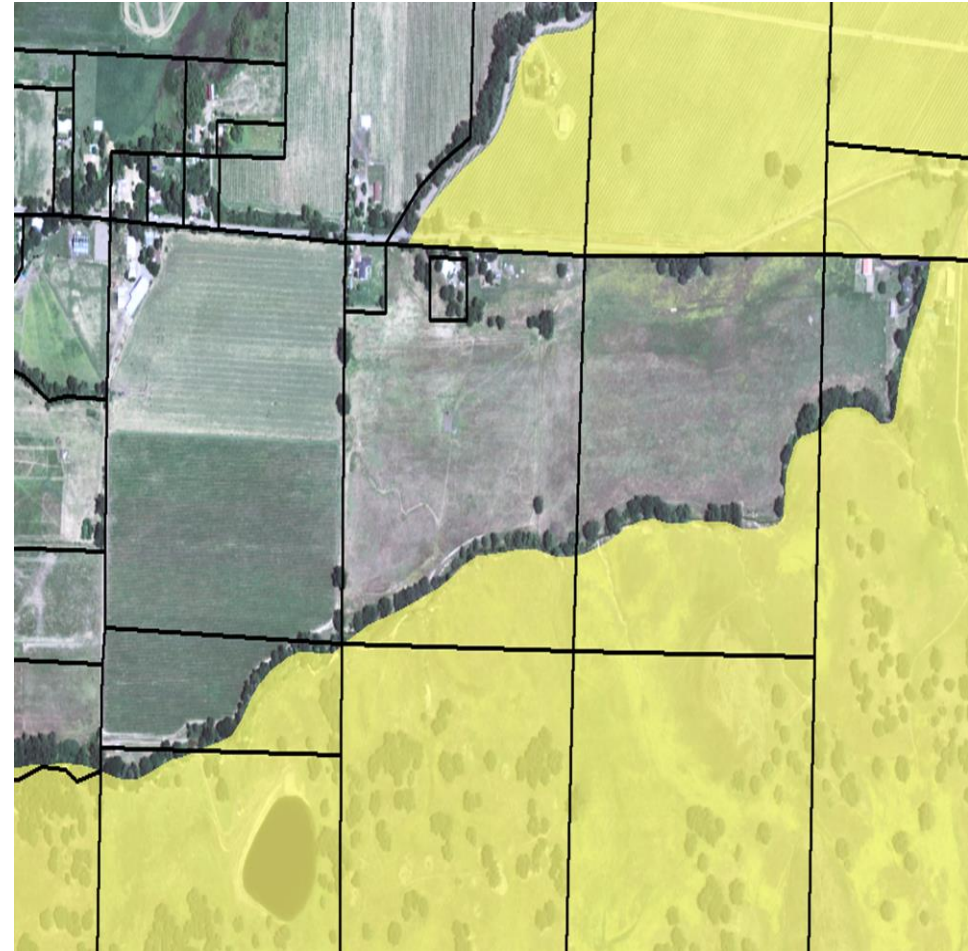
- a) Lands owned or controlled by the federal government... (FRA).*
- b) Lands within the exterior boundaries of any city... (LRA, incorporated).*
- c) Any other lands within the state which do not come within any of the classes which are described in Section 4126. (LRA, unincorporated)*



PRC 4128 (Lines of Convenience)

...the Board may, for purposes of administrative convenience, designate:

- *Roads*
- *Pipelines*
- *Streams*
- *or other recognizable landmarks as arbitrary boundaries*





Upcoming SRA “Add-ons”

- 2020 FHSZ remap will follow the 2020 SRA review
 - SRA FHSZ first
 - Then LRA Very High FHSZ
- Next Statewide SRA review will be in 2025
- Special Reviews performed as needed
 - Annual “automatic” reviews:
 - Federal ownership changes
 - City Incorporation changes



Goals of SRA Review

- Statewide consistency in classifying SRA.
- Enable CAL FIRE to respond in a timely manner to land-use changes.
- Sufficient time for local governments to plan for changes in the classification of SRA.
- Public involvement about decisions of classification of SRA.



SRA does not equal DPA!

- SRA process is as per PRC 4125 and is the responsibility of CAL FIRE alone.
- DPA is a product of the California Master Cooperative Wildland Fire Management (CFMA).
- California Wildfire Coordination Group (CWCG) provides for the coordination and makes recommendations for CFMA and all interagency fire management activities in California.



SRA does not equal DPA!

	SRA	DPA
Purpose	Establish legal responsibility for fire protection “ Checkerboards! ”	DPA boundaries will delineate the dividing line for wildland fire protection by the State and Fed agencies in CFMA “ Less Checkerboards! ”
Established by	Legal requirements in PRC	CFMA Agreement
Review process	Mandated every 5 years	Annually as per CFMA
Maintained by	CAL FIRE by law	CFMA Agreement
Cost Implications	For annual state disbursement to contract counties	Costs for fire protection determined by DPA and the CFMA
Federal/state boundaries	All FRA follows parcels	Default for federal is parcels, agreements determine actual line.
Counties with no CAL FIRE	San Francisco, Sutter	San Francisco, Sutter, Sierra, Alpine, contract counties
Legal ramifications	FHSZ mapping authority, real estate disclosure, inspection responsibility, potentially SRA fees	Fire Agency with direct protection responsibility
Authority	Board of Forestry & Fire Protection	CWCG as per the CFMA




SRA 'Checkerboards'





Unit Annual Operating Plans

File Edit View Favorites Tools Help

 **CAL FIRE**

Home Organization Library Employee Center Help

Deputy Chief of State and Federal Programs

Douglas Michael Ferro
Deputy Chief
State and Federal Programs
D.Michael.Ferro@fire.ca.gov
(916) 653-8362

Co-op Fire, Safety, and Training

Home
State & Federal Agreements
Contract Counties
Fire Management Assistance Grant (FMAG)

Contacts

Phone: (916) 653-8362
Fax: (916) 653-9708

References

State Bargaining Units MOU's Contracts - CalHR
Cal OES Reimbursement
CA Mobilization Guide
USFS Region 5 Including Interagency Red Book, Fireline Handbook and Fire and Aviation Doctrine Northern California Geographic Area Coordination Center (ONCC)

State and Federal Programs - Agreements

Federal, State, Military, & Interagency Agreements

All agreements are available in the Library Handbooks collection, under the 8500 Handbook - Cooperative Fire Services chapter.

Unit Annual Operating Plans

Please select the Unit below to view the available documentation.

- ▶ HUU-KNF-LMU-BNP-DF-RMP-SHU-SKU-LKR-RSF
- ▶ TNF-NV HTF-ENF-LTBMU-NEU-AEU-CCD-CND-NDF (SUB GEO)
- ▶ INF-CDD-BDU
- ▶ BLM-WNP-SHU-SHF-TGU-SKU
- ▶ OR RSF-KNF-SKU-HUU-SHU-LMU-ODF
- ▶ SQF-KNP-TUU
- ▶ BLM-MEU-TGU-LNU
- ▶ CCOP
- ▶ CZU-GNP
- ▶ LNF-MDF-PNF-NOD-LMU-SKU-SHU-TGU-BTU-NEU
- ▶ MNF-NOD-TGU-LNU-MEU-BIA-FWS
- ▶ ODF-SKU-HUU-LMU
- ▶ SRF-RWP-HBR-HIA-NOD-HUU
- ▶ McClellan Reload
- ▶ GACC to GACC
- ▶ Western Great Basin



Levels of SRA Review & Timelines

- ~~1) Unit & Contract County review completed by 15 October 2019~~
- ~~2) Regional review completed by 01 November 2019~~
- ~~3) State review completed by January 2020~~
- ~~4) Director's review completed by January 2020~~
- 5) Board of Forestry review
 - Public comment
 - Implementation on or about 01 July 2020



Unit / Contract Co. Review (1st)

Done

Three types of areas for evaluation.

1. Islands of SRA that are surrounded by LRA on all sides (exterior changes).
2. Islands of LRA that are surrounded by SRA on all sides (interior changes).
3. Intrusions of either SRA or LRA along the existing SRA/LRA boundary line (boundary line adjustments).



Unit / Contract Co. Review (1st)

Done

- When Unit / Contract County staff proposes a SRA to LRA -or- LRA to SRA change, consult with staff from the local fire agencies that will be affected by the change.
- After the 2020 SRA map update, local agency consultation shall include contacting both the fire agencies and planning departments.



Unit / Contract Co. Review (1st)

- 148 change requests submitted, including some automatic changes
- Some changes were withdrawn for future analysis.



Region Review (2nd)

Done

- The Regional review ensures that the system has been consistently applied at the Unit or Contract County level.
- Contract Counties will require approval from their Administrative Unit Chief.
- After completing the review, the Region SRA Coordinator forwards the areas identified for possible reclassification to the State SRA Coordinator.



Region Review (2nd)

- About 115 passed region review (a few with edits required)



State Review (3rd)

Done

- The State Review examines documentation & also conducts on-site inspections as needed.
- The State Review then forwards its recommendations to the Director



State Review (3rd)

- **107 passed the State Review Team**
 - ~~8 automatic changes~~
 - 30 to LRA ~39,000 acres
 - 69 to SRA ~59,000 acres
 - **Statewide**, net ~20,000 additional SRA acres after review



State Review (3rd)

- **By Region, CNR**
 - to LRA ~9000 acres
 - to SRA ~32000 acres
 - Net ~23,000 additional SRA acres after review
- **By Region, CSR**
 - to LRA ~30000 acres
 - to SRA ~27000 acres
 - Net ~2500 additional LRA acres after review



State Review (3rd)

- **By all Contract Counties**
 - to LRA ~600 acres
 - to SRA ~9700 acres
 - Net ~9200 additional SRA acres after review,



Director Review (4th)

Done

- All Level 3 changes approved
- The Director reviews all proposed changes in classification.
- Those changes that the Director approves are sent to the Board of Forestry and Fire Protection so that public hearings may be scheduled.
- At this time the Director notifies affected local government agencies (**sent**) of the proposed changes and their potential impacts.
- (**Sending letters to Fire Departments**)



Director Review (4th)

- **99 recommendations using BOF classification matrix, plus 8 “automatic changes”**
- **Recommend implementation in 90 days**



Board of Forestry Review (5th)

In Process

- The Board is the final authority for approving changes in classification of SRA & will hold public hearings.
 - If approved, the board will, at its choosing:
 - Set an implementation date no earlier than 90 days from approval date. (Recommending)
- or-
- Set a 01 July 2021 implementation date for all changes.



What changes are made?

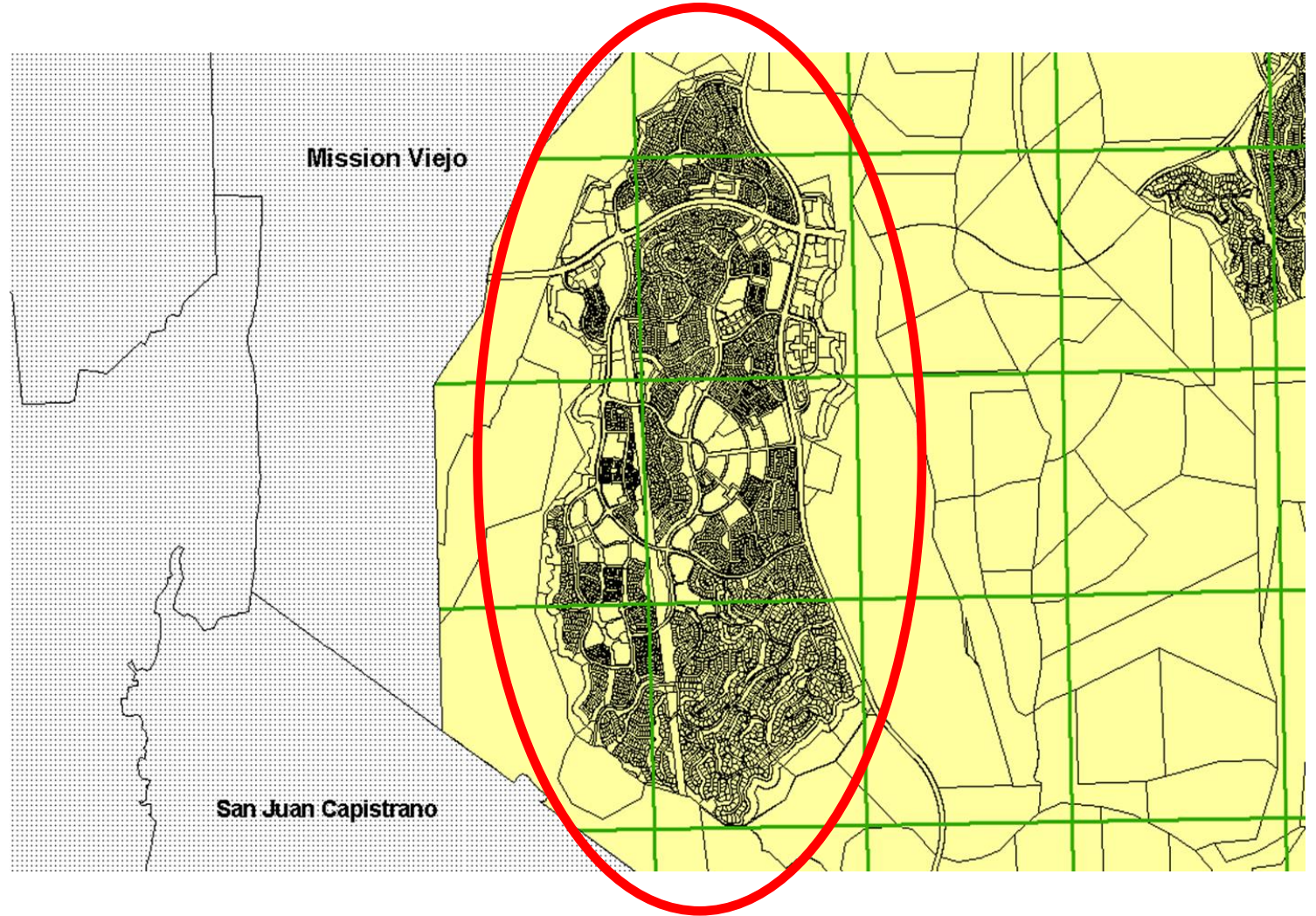
SRA changes can be grouped into 3 categories:

- Cities annexing SRA lands
- Changes of ownership to and from “Federal”
- Land use changes -> no longer producing forest products, forage, or water for domestic, irrigation, or industrial use:
 - Development / Densification
 - Agriculture



Development / Densification

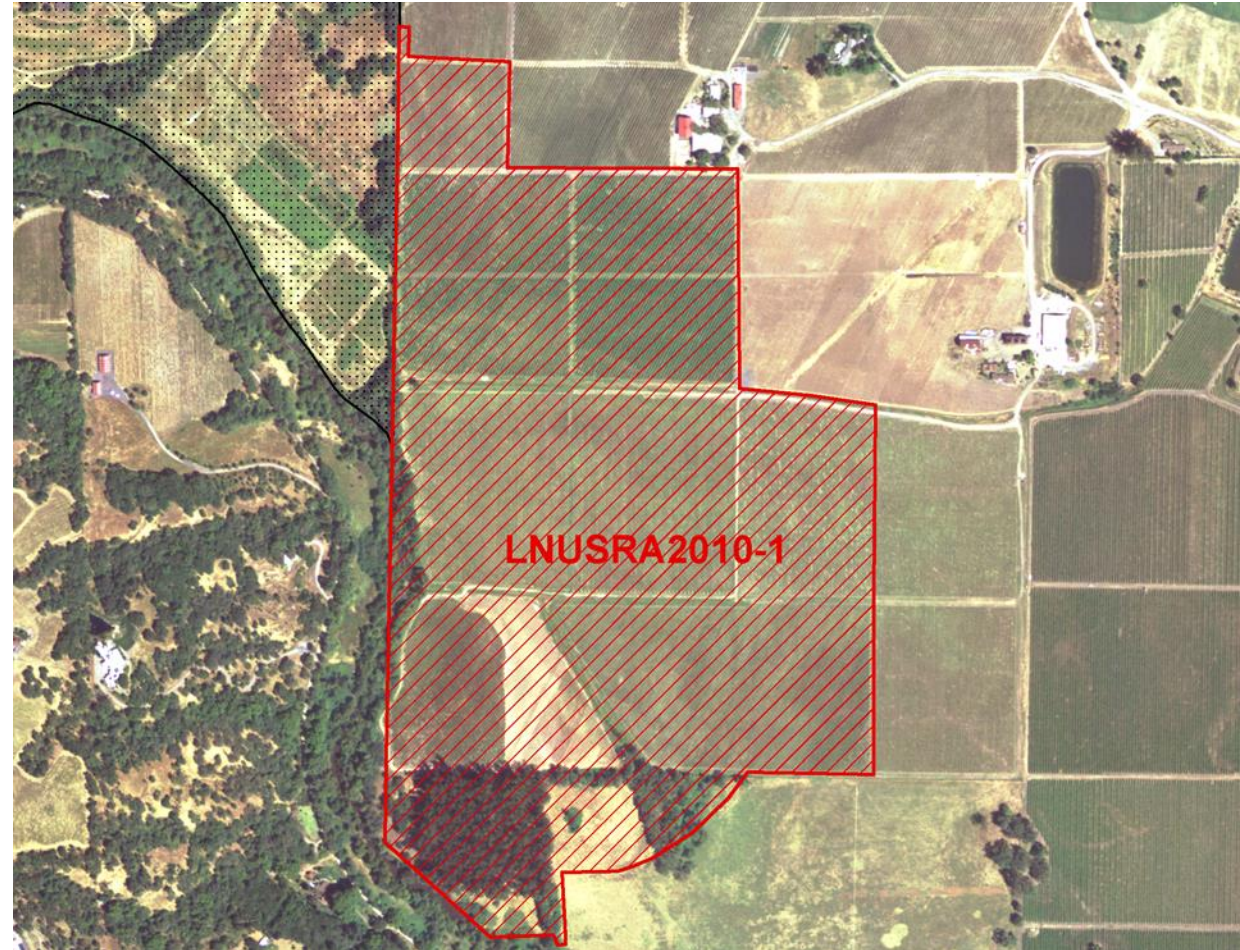
Continuous urbanization averaging more than three residential and/or commercial units per acre over 250 or more acres.





Agricultural

Long term non-flammable crops such as orchards and vineyards which are irrigated and cultivated. (Annuals such as row crops and grain, are not, a long-term modification.)





2020 SRA '5-Year' Review

Questions?

