

General Plan Safety Element Assessment

Board of Forestry and Fire Protection



Table of Contents

| | |
|--|---|
| Purpose and Background..... | 1 |
| Methodology for Review and Recommendations..... | 2 |
| Safety Element Assessment..... | 3 |
| Sample Safety Element Recommendations | 6 |
| Fire Hazard Planning in Other Elements of the General Plan | 8 |

Purpose and Background

Upon the next revision of the housing element on or after January 1, 2014, the safety element is required to be reviewed and updated as necessary to address the risk of fire for land classified as state responsibility areas and land classified as very high fire hazard severity zones. (Gov. Code, § 65302, subd. (g)(3).)

The safety element is required to include:

- Fire hazard severity zone maps available from the Department of Forestry and Fire Protection.
- Any historical data on wildfires available from local agencies or a reference to where the data can be found.
- Information about wildfire hazard areas that may be available from the United States Geological Survey.
- The general location and distribution of existing and planned uses of land in very high fire hazard severity zones (VHFHSZs) and in state responsibility areas (SRAs), including structures, roads, utilities, and essential public facilities. The location and distribution of planned uses of land shall not require defensible space compliance measures required by state law or local ordinance to occur on publicly owned lands or open space designations of homeowner associations.
- The local, state, and federal agencies with responsibility for fire protection, including special districts and local offices of emergency services. (Gov. Code, § 65302, subd. (g)(3)(A).)

Based on that information, the safety element shall include goals, policies, and objectives that protect the community from the unreasonable risk of wildfire. (Gov. Code, § 65302, subd. (g)(3)(B).) To carry out those goals, policies, and objectives, feasible implementation measures shall be included in the safety element, which include but are not limited to:

- Avoiding or minimizing the wildfire hazards associated with new uses of land.
- Locating, when feasible, new essential public facilities outside of high fire risk areas, including, but not limited to, hospitals and health care facilities, emergency shelters, emergency command centers, and emergency communications facilities, or identifying construction methods or other methods to minimize damage if these facilities are located in the SRA or VHFHSZ.
- Designing adequate infrastructure if a new development is located in the SRA or VHFHSZ, including safe access for emergency response vehicles, visible street signs, and water supplies for structural fire suppression.
- Working cooperatively with public agencies with responsibility for fire protection. (Gov. Code, § 65302, subd. (g)(3)(C).)

The safety element shall also attach or reference any fire safety plans or other documents adopted by the city or county that fulfill the goals and objectives or contains the information required above. (Gov. Code, § 65302, subd. (g)(3)(D).) This might include Local Hazard Mitigation Plans, Unit Fire Plans, Community Wildfire Protection Plans, or other plans.

There are several reference documents developed by state agencies to assist local jurisdictions in updating their safety elements to include wildfire safety. The Fire Hazard Planning, General Plan Technical Advice Series from the Governor's Office of Planning and Research, referenced in Government Code section 65302, subdivision (g)(3) and available at

1400 Tenth Street
Sacramento, CA 95814
(916) 322-2318

https://www.opr.ca.gov/docs/Final_6.26.15.pdf

provides policy guidance, information resources, and fire hazard planning examples from around California that shall be considered by local jurisdictions when reviewing the safety element of its general plan.

The Board of Forestry and Fire Protection (Board) utilizes this Safety Element Assessment in the Board's review of safety elements under Government Code section 65302.5. At least 90 days prior to the adoption or amendment of their safety element, counties that contain SRAs and cities or counties that

contain VHFHSZs shall submit their safety element to the Board. (Gov. Code, § 65302.5, subd. (b).) The Board shall review the safety element and respond to the city or county with its findings regarding the uses of land and policies in SRAs or VHFHSZs that will protect life, property, and natural resources from unreasonable risks associated with wildfires, and the methods and strategies for wildfire risk reduction and prevention within SRAs or VHFHSZs. (Gov. Code, § 65302.5, subd. (b)(3).)

The CAL FIRE Land Use Planning team provides expert fire protection assistance to local jurisdictions statewide. Fire captains are available to work with cities and counties to revise their safety elements and enhance their strategic fire protection planning.

Methodology for Review and Recommendations

Utilizing staff from the CAL FIRE Land Use Planning team, the Board has established a standardized method to review the safety element of general plans. The methodology includes

- 1) reviewing the safety element for the requirements in Government Code section 65302, subdivision (g)(3)(A),
- 2) examining the safety element for goals, policies, objectives, and implementation measures that mitigate the wildfire risk in the planning area (Gov. Code, § 65302, subd. (g)(3)(B) & (C)), and
- 3) making recommendations for methods and strategies that would reduce the risk of wildfires (Gov. Code, § 65302.5, subd. (b)(3)(B)).

The safety element will be evaluated against the attached Assessment, which contains questions to determine if a safety element meets the fire safety planning requirements outlined in Government Code, section 65302. The reviewer will answer whether or not a submitted safety element addresses the required information, and will recommend changes to the safety element that will reduce the wildfire risk in the planning area. These recommended changes may come from the list of sample goals, policies, objectives, and implementation measures that is included in this document after the Assessment, or may be based on the reviewer's knowledge of the jurisdiction in question and their specific wildfire risk. By answering the questions in the Assessment, the reviewer will determine if the jurisdiction's safety element has adequately addressed and mitigated their wildfire risk. If it hasn't, any specific recommendations from the reviewer will assist the jurisdiction in revising the safety element so that it does.

Once completed, the Assessment should provide clear guidance to a city or county regarding any areas of deficiency in the safety element as well as specific goals, policies, objectives, and implementation measures the Board recommends adopting in order to mitigate or reduce the wildfire threat in the planning area.

General Plan Safety Element Assessment

| | | | |
|-------------------------------------|---------------------------------|---------------------------------|--------------------------|
| Jurisdiction: Town of Mammoth Lakes | Notes: | CAL FIRE Unit: San Bernardino | Date Received: Ongoing |
| County: Mono | LUPP Reviewer: Raymond Martinez | UNIT CONTACT: Shane Littlefield | Date Reviewed: 6/25/2019 |

Background Information Summary

Specific background information about fire hazards in each jurisdiction.

Indicate whether the safety element includes the specified information. If YES, indicate in the comments where that information can be found; if NO, provide recommendations to the jurisdiction regarding how best to include that information in their revised safety element.

| | Yes | No | Comments/Recommendations |
|--|-----|----|---|
| Are Fire Hazard Severity Zones Identified? <i>CAL FIRE or Locally Adopted Maps</i> | X | | MAP figure 6 located in the general plan Health and Safety Element |
| Is historical data on wildfires or a reference to where the data can be found, and information about wildfire hazard areas that may be available from the United States Geological Survey, included? | X | | Located in the safety element page 57 Figure 7 historical fire perimeters. |
| Has the general location and distribution of existing and planned uses of land in very high fire hazard severity zones (VHFHSZs) and in state responsibility areas (SRAs), including structures, roads, utilities, and essential public facilities, been identified? | X | | Located in figure 6 of the safety element page |
| Have local, state, and federal agencies with responsibility for fire protection, including special districts and local offices of emergency services, been identified? | X | | Emergency Preparedness S.4.D Policy Maintain mutual aid agreement with Federal, State, and local emergency agencies |
| Are other fire protection plans, such as Community Wildfire Protection Plans, Local Hazard Mitigation Plans, CAL FIRE Unit or Contract County Fire Plans, referenced or incorporated into the Safety Element? | X | | Fire S.6. GOAL: Promote community resilience through collaboration on the preparation of the LHMP and CWPP |
| Any other relevant information regarding fire hazards in SRAs or VHFHSZs? | | | |

Goals, Policies, Objectives, and Feasible Implementation Measures

A set of goals, policies, and objectives based on the above information to protect the community from unreasonable risk of wildfire and implementation measures to accomplish those stated goals, policies, and objectives.

Critically examine the submitted safety element and determine if it is adequate to address the jurisdiction's unique fire hazard. Answer YES or NO appropriately for each question below. If the recommendation is irrelevant or unrelated to the jurisdiction's fire hazard, answer N/A. For NO, provide information in the Comments/Recommendations section to help the jurisdiction incorporate that change into their safety element revision. This information may utilize example recommendations from Sample Safety Element Recommendations and Fire Hazard Planning in Other Elements of the General Plan below, may indicate how high of a priority this recommendation is for a jurisdiction, or may include other jurisdiction-specific information or recommendations.

Avoiding or minimizing the wildfire hazards associated with new uses of land.

| | Yes | No | N/A | Comments/Recommendations |
|---|-----|----|-----|---|
| Land Use | | | | |
| Does local ordinance require development standards that meet or exceed title 14, CCR, division 1.5, chapter 7, subchapter 2, articles 1-5 (commencing with section 1270) (SRA Fire Safe Regulations) and title 14, CCR, division 1.5, chapter 7, subchapter 3, article 3 (commencing with section 1299.01) (Fire Hazard Reduction Around Buildings and Structures Regulations) for SRAs and/or VHFHSZs? | X | | | Located in Policy S.5.A and Subsequent Actions and Policy S.6.B and corresponding Actions) S6F and corresponding actions. The Town and MLFPD adopted the Chapter 7A, 66474.02 sub division law |
| Are there goals and policies to avoid or minimize new residential development in VHFHSZs? | X | | | PolicyS.5. A. 1-3 Actions – Collaborate and coordinate with MLFPD on fire planning, preparedness, and response |
| Has fire safe design been incorporated into future development requirements? | X | | | S.6.B.1-3Policy: Evaluate development proposals for wildfire risk reductions. Policy S5A Policy S5A1 (Policy S.6.I and S.6.I.1) Mammoth also requires Fire Protection Plans to be developed in all new development in the VHFHSZs. 6SB2 policy |
| Are new essential public facilities located outside high fire risk areas, such as VHFHSZs, when feasible? | X | | | S.6.J.Policy: Review and mitigate critical infrastructure for wildfire vulnerabilities..6.J.1.Action: Periodically update the Town's critical infrastructure inventory to determine changes to vulnerability from wildfire.S.6.J.2.Action: Coordinate with MLFPD to conduct parcel level assessments of critical infrastructure and provide mitigation recommendations.S.6.J.3. Action: Develop mitigation requirements for future critical infrastructure and facilities.S.6.J.4. Action: Identify ongoing maintenance and long-term integrity requirements and funding sources to address deficiencies in existing and planned critical infrastructure. |
| Are there plans or actions identified to mitigate existing non-conforming development to contemporary fire safe standards, in terms of road standards and vegetative hazard? | X | | | S.6.D (1)(2). Identify neighborhoods with limited access that may require secondary routes for first responders and the public during a fire event S6F Addresses fuel mitigation to town to reduce wildfire risk. |
| Does the plan include policies to evaluate re-development after a large fire? | X | | | S.6.C.3. Identify potential post-fire recovery assistance needs, including hazardous tree and debris removal and other landowner recovery measures. The element does require new development to follow current code requirements related to road, construction, and vegetation management and does address re-development post large fire under S6C4 stated as recovery which covers this activity specifically. |

| Fuel Modification | | | |
|--|---|--|---|
| Is fuel modification around homes and subdivisions required for new development in SRAs or VHFHSZs? | x | | S.5.A.2 – Action: Prepare wildfire mitigation landscape standards to address wildfire hazard within the structure ignition zone S.6.B.3. – Action: Evaluate future development application for their potential impacts on risk reductions, such as the location of golf courses, community parks, and other uses that are fire adapted or incorporate significant areas of fuel modification |
| Are fire protection plans required for new development in VHFHSZs? | X | | S.5.A.1 Fire safety Standards-Action; Mammoth Requires all new development to comply with fire safety standards and requirements of the Fire Dept. and Town of ML as well as requires a Fire Protection Plans before approval. |
| Does the plan address long term maintenance of fire hazard reduction projects, including community fire breaks and private road and public road clearance? | X | | S.5.C.1-2 – Improve wildfire management coordination with prescribed burns and affected agencies The Mammoth CWPP addresses. Policy S.6.A, Action S.6.C.1; 2; 4, Policy S.6.F, Policy S.6.G S.6.F.4 – focused on long term maintenance needs for fuels management. |
| Access | | | |
| Is there adequate access (ingress, egress) to new development in VHFHSZs? | X | | S.5A.1. Action: Require all new development to comply with fire safety standards and requirements of the MLFPD and Town of Mammoth Lakes. S.6.D.3. Require new development in the VHFHSZ to provide adequate roadway widths and lengths in compliance with Chapter 7A requirements. |
| Are minimum standards for evacuation of residential areas in VHFHSZs defined? | x | | S.6.D.1-2 – Policy: Identify neighborhoods with limited access that may require secondary routes for first responders and the public during a fire event. |
| If areas exist with inadequate access/evacuation routes, are they identified? Are mitigation measures or improvement plans identified? | x | | S.4.A-F Develop a policy that development will be prioritized in areas with an adequate road network and associated infrastructure. |
| Are there policies or programs promoting public outreach about defensible space or evacuation routes? Are there specific plans to reach at-risk populations? | x | | S.5.4.G-.1 Adaptation Policy: Work with local and regional partners to launch a coordinated preparedness education campaign to encourage community members to take action to improve resiliency |
| Fire Protection | | | |
| Does the plan identify future water supply for fire suppression needs? | X | | Located in Policy S.6.J, Policy S.6.K. Text located on SE page 54 states flow requirements. |

| | | | | |
|--|-----|----|-----|--|
| Does new development have adequate fire protection? | X | | | Map located on page 56 figure 6 from the SE shows VHFHSZs and faculties. |
| Develop adequate infrastructure if a new development is located in SRAs or VHFHSZs. | | | | |
| | Yes | No | N/A | Comments/Recommendations |
| Does the plan identify adequate infrastructure for new development related to: | | | | |
| Water supply and fire flow? | X | | | Policy S.6.J, Policy S.6.K Text located on SE page 54 states flow requirements. |
| Location of anticipated water supply? | X | | | Policy S.6.J, Policy S.6.K |
| Maintenance and long-term integrity of water supplies? | X | | | Located in the following policies: Policy S.6.J, Policy S.6.K |
| Evacuation and emergency vehicle access? | X | | | S.5. Goal: Collaborate and coordinate with Mammoth Lakes Fire Protection District on the planning, preparedness and response.S6D S.6.D. Policy: Identify neighborhoods within and outside the Very High Fire Hazard Severity Zones, with limited access that may require secondary routes for first responders and the public during a fire event. S6D1 Action: Evaluate alternative emergency access routes in neighborhoods that have single ingress/egress. S.6.D2. Action: Develop an evacuation plan for high tourism seasons/events. |
| Fuel modification and defensible space? | X | | | S.6. Goal: Promote community resilience through collaboration on the preparation of the LHMP and CWPP – S.6. F.4.Action: Identify long term maintenance actions and funding mechanisms for fuels management and modification, especially along critical roadways and adjacent to critical infrastructure. Incorporate healthy forest management policies into the Open Space and Conservation Elements of the General Plan, future development, and including actions to integrate wildfire mitigation into trails and open space management practices planning. S.6.F. Policy: Work with MLFPD to identify fuel treatments that will reduce wildfire threat to the town. S.6. F.1.Action: Coordinate with the Valentine Reserve, Camp High Sierra, and other partners to identify potential fuel mitigation projects that reduce wildfire risk and support grant funding applications for these projects. |
| Vegetation clearance maintenance on public and private roads? | X | | | S.6. Goal: Promote community resilience through collaboration on the preparation of the LHMP and CWPP S.6. F.4.Action: Identify |

| | | | | |
|---|-----|----|-----|--|
| | | | | <p>long term maintenance actions and funding mechanisms for fuels management and modification, especially along critical roadways and adjacent to critical infrastructure. Incorporate healthy forest management policies into the Open Space and Conservation Elements of the General Plan, future development, and including actions to integrate wildfire mitigation into trails and open space management practices planning.</p> <p>S.6.F. Policy: Work with MLFPD to identify fuel treatments that will reduce wildfire threat to the town.</p> <p>S.6. F.1.Action: Coordinate with the Valentine Reserve, Camp High Sierra, and other partners to identify potential fuel mitigation projects that reduce wildfire risk and support grant funding applications for these projects.</p> |
| Visible home and street addressing and signage? | X | | | Located in Municipal Code Chapter 16.32.606 thru .140 policy requiring WUI building standards and FPP requirements. |
| Are community fire breaks identified in the plan? Is there a discussion of how those fire breaks will be maintained? | X | | | <p>S6F Policy Work with MLFPD to identify fuel treatments that will reduce wildfire threat to the town. S.6.F.1. Action: Coordinate with the Valentine Reserve, Camp High Sierra, and other partners to identify potential fuel mitigation projects that reduce wildfire risk and support grant funding applications for these projects.</p> <p>S.6.F.2.Action: Consider Updates to building and landscaping requirements and protocols that integrate Cal Fire and MLFPD regulations and procedures. S.6.F.3. Adaptation Action: Encourage a drought tolerant and fire-resistant landscaping demonstration garden to encourage public participation in water conservation and fire preparedness efforts.S.6.F.4. Action: Identify long term maintenance actions and funding mechanisms for fuels management and modification, especially along critical roadways and adjacent to critical infrastructure.S.6.G. Policy: Increase funding for wildfire mitigation and protection.S.6.G.1. Action: Pursue grant funding opportunities to support private property owner vegetation clearing and treatments.</p> |
| Working cooperatively with public agencies responsible for fire protection. | | | | |
| | Yes | No | N/A | Comments/Recommendations |
| Is there a map or description of existing emergency service facilities and areas lacking service, specifically noting any areas in SRAs or VHFHSZs? | X | | | The 2019 CWPP identifies future development and emergency service needs. The town is actively planning for these needs and addresses service requirements throughout the safety element. The town has mapped seven zones which identify service needs and there was no identified service lack. There is policy throughout their |

| | | | |
|--|---|--|--|
| | | | general plan to address future service needs and infrastructure requirements. |
| Does the plan include an assessment and projection of future emergency service needs? | X | | The 2019 CWPP identifies future development and emergency service needs. The town is actively planning for these needs and addresses service requirements throughout the safety element. |
| Are goals or standards for emergency services training described? | X | | Training standards for the district are in the 2019 CWPP and needs. |
| Does the plan outline inter-agency preparedness coordination and mutual aid multi-agency agreements? | x | | S.5.C.1-2 Policy: Improve wildfire management coordination between the Town and other entities |

Sample Safety Element Recommendations

These are examples of specific policies, objectives, or implementation measures that may be used to meet the intent of Government Code sections 65302, subdivision (g)(3) and 65302.5, subdivision (b). Safety element reviewers may make recommendations that are not included here.

| |
|--|
| A. Maps, Plans and Historical Information |
| 1. Include or reference CAL FIRE Fire Hazard Severity Zone maps or locally adopted wildfire hazard zones. |
| 2. Include or reference the location of historical information on wildfires in the planning area. |
| 3. Include a map or description of the location of existing and planned land uses in SRAs and VHFHSZs, particularly habitable structures, roads, utilities, and essential public facilities. |
| 4. Identify or reference a fire plan that is relevant to the geographic scope of the general plan, including the Unit/Contract County Fire Plan, Local Hazard Mitigation Plan, and any applicable Community Wildfire Protection Plans. |
| 5. Align the goals, policies, objectives, and implementation measures for fire hazard mitigation in the safety element with those in existing fire plans, or make plans to update fire plans to match the safety element. |
| 6. Create a fire plan for the planning area. |
| B. Land Use |
| 1. Develop fire safe development codes to use as standards for fire protection for new development in SRAs or VHFHSZs that meet or exceed the statewide minimums in the SRA Fire Safe Regulations. |
| 2. Adopt and have certified by the Board of Forestry and Fire Protection local ordinances which meet or exceed the minimum statewide standards in the SRA Fire Safe Regulations. |
| 3. Identify existing development that do not meet or exceed the SRA Fire Safe Regulations or certified local ordinances. |
| 4. Develop mitigation measures for existing development that does not meet or exceed the SRA Fire Safe Regulations or certified local ordinances or identify a policy to do so. |
| C. Fuel Modification |
| 1. Develop a policy to communicate vegetation clearance requirements to seasonal, absent, or vacation rental owners. |
| 2. Identify a policy for the ongoing maintenance of vegetation clearance on public and private roads. |
| 3. Include fuel breaks in the layout/siting of subdivisions. |

| |
|--|
| 4. Identify a policy for the ongoing maintenance of existing or proposed fuel breaks. |
| 5. Identify and/or map existing development that does not conform to current state and/or locally adopted fire safety standards for access, water supply and fire flow, signing, and vegetation clearance in SRAs or VHFHSZs. |
| 6. Identify plans and actions for existing non-conforming development to be improved or mitigated to meet current state and/or locally adopted fire safety standards for access, water supply and fire flow, signing, and vegetation clearance. |
| D. Access |
| 1. Develop a policy that approval of parcel maps and tentative maps in SRAs or VHFHSZs is conditional based on meeting the SRA Fire Safe Regulations and the Fire Hazard Reduction Around Buildings and Structures Regulations, particularly those regarding road standards for ingress, egress, and fire equipment access. (See Gov. Code, § 66474.02.) |
| 2. Develop a policy that development will be prioritized in areas with an adequate road network and associated infrastructure. |
| 3. Identify multi-family housing, group homes, or other community housing in SRAs or VHFHSZs and develop a policy to create evacuation or shelter in place plans. |
| 4. Include a policy to develop pre-plans for fire risk areas that address civilian evacuation and to effectively communicate those plans. |
| 5. Identify road networks in SRAs or VHFHSZs that do not meet title 14, CCR, division 1.5, chapter 7, subchapter 2, articles 2 and 3 (commencing with section 1273.00) or certified local ordinance and develop a policy to examine possible mitigations. |
| E. Fire Protection |
| 1. Develop a policy that development will be prioritized in areas with adequate water supply infrastructure. |
| 2. Plan for the ongoing maintenance and long-term integrity of planned and existing water supply infrastructure. |
| 3. Map existing emergency service facilities and note any areas lacking service, especially in SRAs or VHFHSZs. |
| 4. Project future emergency service needs for the planned land uses. |
| 5. Include information about emergency service trainings or standards and plans to meet or maintain them. |
| 6. Include information about inter-agency preparedness coordination or mutual aid agreements. |

Fire Hazard Planning in Other Elements of the General Plan

When updating the General Plan, here are some ways to incorporate fire hazard planning into other elements. Wildfire safety is best accomplished by holistic, strategic fire planning that takes advantage of opportunities to align priorities and implementation measures within and across plans.

| |
|--|
| Land Use Element |
| Goals and policies include mitigation of fire hazard for future development or limit development in very high fire hazard severity zones. |
| Disclose wildland urban-interface hazards, including fire hazard severity zones, and/or other vulnerable areas as determined by CAL FIRE or local fire agency. |
| Design and locate new development to provide adequate infrastructure for the safe ingress of emergency response vehicles and simultaneously allow citizen egress during emergencies. |
| Describe or map any Firewise Communities or other fire safe communities as determined by the National Fire Protection Association, Fire Safe Council, or other organization. |
| Housing Element |
| Incorporation of current fire safe building codes. |
| Identify and mitigate substandard fire safe housing and neighborhoods relative to fire hazard severity zones. |
| Consider diverse occupancies and their effects on wildfire protection (group housing, seasonal populations, transit-dependent, etc). |
| Open Space and Conservation Elements |
| Identify critical natural resource values relative to fire hazard severity zones. |
| Include resource management activities to enhance protection of open space and natural resource values. |
| Integrate open space into fire safety planning and effectiveness. |
| Mitigation for unique pest, disease and other forest health issues leading to hazardous situations. |
| Circulation Element |
| Provide adequate access to very high fire hazard severity zones. |
| Develop standards for evacuation of residential areas in very high fire hazard severity zones. |
| Incorporate a policy that provides for a fuel reduction maintenance program along roadways. |

Town of Mammoth Lakes General Plan 2007

Includes 2019 Safety Element Update



Text highlighted in this document has been added since the Public Review Draft based on consultation with Cal FIRE in conformance with SB 1241 requirements for Safety Elements



TOWN COUNCIL

Cleland Hoff, Mayor
Bill Sauser, Mayor Pro Tem John
Wentworth, Councilmember
Linda Salcido Councilmember
Kirk Stapp, Councilmember

PLANNING AND ECONOMIC DEVELOPMENT COMMISSION

Michael Vanderhurst, Chair
Jennifer Burrows, Vice-Chair
Paul Chang, Commissioner
Greg Eckert, Commissioner
Jessica Kennedy,
Commissioner

RECREATION COMMISSION

~~Elizabeth Truax, Chair~~
~~Sean Turner, Vice-Chair~~
~~Dan O'Connell, Commissioner~~
~~Laurel Martin, Commissioner~~
~~Christie Osborne, Commissioner~~

TOWN ADMINISTRATION

Daniel C. Holler, Town Manager
Pam Kobylarz, Assistant to the Town Manager
Jamie Gray, Town Clerk
Grady Dutton, Public Works Director
Rob Patterson, Administrative
Services/Finance Director
Nate Greenburg, IT Director
Brian Picken, Airport Manager
Al Davis, Chief of Police
Stuart Brown, Parks and Recreation Director
Andrew Morris, Town Attorney
Sandra Moberly, Community and Economic Development
Director

Photography courtesy of Mammoth Mountain Ski Area / Peatross
and Andy Thies Photography



RPC 1 (a)



| | PAGE |
|---|-----------|
| INTRODUCTION..... | 7 |
| Community Vision. | 7 |
| Planning a Successful Community | 8 |
| Components of the General Plan. | 8 |
| Community Goals for each Element. | 9 |
| ECONOMY | 12 |
| Sustainable Economy | 12 |
| Economic Development. | 12 |
| Air Service. | 12 |
| Marketing, Promotion, and Special Events. | 13 |
| Sustainable Tourism..... | 13 |
| Diversify Economy..... | 13 |
| Business and Employment. | 13 |
| Education. | 13 |
| ARTS, CULTURE, HERITAGE & NATURAL HISTORY..... | 14 |
| Unique Natural History | 14 |
| Rich Community Culture. | 14 |
| Expressive of Community | 15 |
| COMMUNITY DESIGN | 16 |
| Community Character | 16 |
| Celebrate Public Spaces. | 16 |
| Celebrate the Spectacular Natural Surroundings. | 16 |
| Careful Site Planning. | 17 |
| Distinctive Architecture. | 17 |
| Comfortable Building Height, Mass, and Scale. | 17 |
| Community Design and Streetscape. | 17 |
| Natural Environment. | 20 |
| Night Sky, Light Pollution, and Glare. | 21 |
| Quiet Community..... | 21 |
| NEIGHBORHOOD AND DISTRICT CHARACTER..... | 22 |
| Community Character | 24 |
| Districts | 24 |
| Main Street, Old Mammoth Road, and Shady Rest. .. | 24 |
| Gateway..... | 25 |
| North Village. | 26 |
| Sierra Star..... | 27 |
| Snowcreek | 27 |
| Mountain Portals. | 27 |
| Eagle Lodge/Mountain Portal | 27 |
| Canyon Lodge/Mountain Portal. | 27 |
| Main Lodge/Mountain Portal. | 28 |
| Village/Mountain Portal. | 28 |
| Special Study Areas. | 29 |

LIST OF FIGURES

| | |
|----------------|------|
| Figure | PAGE |
| Education..... | 52 |

| | |
|--|-------------|
| LAND USE..... | PAGE |
| Livability..... | 30 |
| Housing..... | 31 |
| Small Town Character | 31 |
| Accommodations and Community Amenities. | 32 |
| Urban Growth Boundary..... | 33 |
| District Planning..... | 33 |
| Land Use Designations..... | 33 |
| Other State Requirements..... | 37 |
| Build-out | 37 |
| MOBILITY | 38 |
| Way- finding..... | 38 |
| Regional Transportation..... | 38 |
| In – Town Transportation..... | 38 |
| Walking and Bicycling..... | 39 |
| Transit System..... | 40 |
| Parking..... | 40 |
| Streets | 40 |
| Traffic Calming..... | 41 |
| Snow Management..... | 41 |
| PARKS, OPEN SPACE AND RECREATION | 42 |
| A Town Within a Park..... | 42 |
| Trail System..... | 42 |
| Recreational Opportunities..... | 43 |
| Connected Throughout..... | 43 |
| RESOURCE MANAGEMENT AND CONSERVATION..... | 44 |
| Habitat Resources..... | 44 |
| Healthy Ecosystem..... | 45 |
| Mammoth Creek..... | 45 |
| Water Resources..... | 45 |
| Erosion and Sedimentation..... | 46 |
| Energy Resources..... | 46 |
| Green Technology | 46 |
| Energy Conservation..... | 46 |
| Solid Waste..... | 47 |
| Air Quality..... | 47 |
| PUBLIC HEALTH AND SAFETY | 49 |
| Public Health..... | 49 |
| Public Safety | 49 |
| Police Enforcement..... | 49 |
| Hazards..... | 50 |
| Carbon Dioxide..... | 51 |
| Mineral Resource Management..... | 51 |
| Emergency Preparedness..... | 51 |
| Public Facilities and Services..... | 52 |



| | | |
|----|---|----|
| 1. | Major View Corridors and Vistas. | 18 |
| 2. | Vistas and Landmarks. | 19 |
| 3. | Neighborhood Character Map | 23 |
| 4. | Planning, Municipal, and Urban Growth Boundary | 34 |
| 5. | Land Use Diagram..... | 35 |

**LIST OF
TABLES**

| | |
|-------|----------------------------------|
| Table | |
| 1. | General Plan Organization.9 |

APPENDICES

| | |
|------------------|---|
| APPENDIX | A: ACTION TABLE |
| APPENDIX | B: TRANSECT DIAGRAM |
| APPENDIX | C: PHYSICAL DEVELOPMENT |
| CONCEPT APPENDIX | D: MOBILITY |
| APPENDIX | E: USEFUL TERMS FOR UNDERSTANDING THE GENERAL PLAN |



PUBLIC HEALTH AND SAFETY

INTENT

The Town of Mammoth Lakes recognizes the potential impacts climate change can have on a community. In response, the Town initiated the Resilient Mammoth Lakes project, funded by a Caltrans funded SB 1 grant, which is a comprehensive review of how climate change and its related hazards may affect the Town in the coming years and decades. As part of the Resilient Mammoth Lakes project, and in response to SB 379 and SB 1241, the Town of Mammoth Lakes completed a climate change vulnerability assessment and comprehensive review of fire hazards within the Town. The vulnerability assessment was prepared to inform how the following exposures will affect sensitive assets in the community:

- Drought
- Extreme heat
- Flooding
- Forestry pests and diseases
- Human health hazards
- Landslides and mudflows
- Severe weather
- Severe winter weather
- Wildfire
- Smoke and ash

The Resilient Mammoth Lakes project identified strategies to ensure the people, buildings, economy, and natural environment will have the tools to prepare, respond, and recover from hazards exacerbated by climate change. The resulting strategies are identified as “adaptation policies” and “adaptation actions”, which will help increase the resiliency of the population, built environment, the economy, and natural environment within the Town.

The Public Health and Safety Element will increase resiliency to natural and manmade hazards to improve our quality of life and to encourage people to live and work in Mammoth Lakes. The community will be comfortable and safe. Facilities that are important to creating a livable, comfortable, and safe community will be supported, provided, and encouraged. Awareness of climate change hazards through public agency coordination, ~~coordinated~~ organized public information, and continuous education is a priority.

Public Health

S.1. GOAL: Support high quality health care and child care for Mammoth Lakes’ residents and visitors.

- S.1.A. Policy: Encourage an adequate, affordable and diverse supply of infant and child care facilities and services.
- S.1.A.1. Action: Work with Mono County Office of Education and other organizations to support and promote child care facilities and services.
- S.1.B. Policy: Support adequate hospital, paramedic and other health facilities.
- S.1.B.1. Action: Provide emergency operation centers.
- S.1.C. Policy: Support school and agency programs on matters of public health.
- S.1.D. Policy: Encourage development and expansion of senior services and facilities to serve the senior population.
- S.1.E. Policy: Permit day care facilities in residential zones.
- S.1.E.1. Action: Amend the Zoning Code to enable state-mandated incentives for child care facilities.

Public Safety

S.2. GOAL: Keep Mammoth Lakes a safe place to live, work and play.

- S.2.A. Policy: Maintain safe and efficient municipal operations and services.
- S.2.A.1. Action: Develop and maintain a Municipal Operation Plan that includes sites for storage and/or disposal of hazardous material, trash, propane, snow, and forestry products.

Police Enforcement

- S.2.B. Policy: Ensure effective code enforcement and policing programs.

S.2.C. Policy: Provide public safety facilities at multiple locations to facilitate prompt response times.

S.2.D. Policy: Increase public access to police services.

S.2.D.1. Action: Use foot and bicycle patrols to increase community policing.

S.2.D.2. Action: Promote establishment and/ or expansion of neighborhood watch programs for residential areas.

S.2.D.3. Action: Continue enforcement of the California Motor Vehicle Code, local speed controls, and chain controls.

S.2.D.4. Action: Reduce criminal behavior in the community by involving the community and coordinating with other agencies.

Hazards

S.3. GOAL: Minimize loss of life, injury, property damage, and natural resource destruction from all public safety hazards.

Snow Management

S.3.A. Policy: Design all structures in Mammoth Lakes to ~~withstand~~ withstand snow loads, and to reduce any additional hazards created by snow accumulation.

S.3.B. Policy: Design buildings so that snow shed, ice shed, and snowmelt are not a hazard to people and property.

S.3.C. Policy: All developments shall provide and maintain adequate on-site snow storage or maintain a Town-approved snow-hauling and storage program.

S.3.D. Policy: Maintain safe public access and circulation through comprehensive snow removal programs provided by the Town or by private entities.

~~S.3.D.~~ S.3.E. **Adaptation Policy:** Provide education and outreach to community members on mobility options during winter weather conditions including strategies to shelter in place during extreme events.

S.3.E.1. **Adaptation Action:** Provide information to residents and visitors regarding safe and convenient transportation options including strategies to shelter in place during severe winter weather.

S.3.F. **Adaptation Policy:** Build on existing collaboration between the Town, Mammoth Mountain Ski Area, local businesses and Caltrans to ensure that snow management is more effective, equitable and safer for the entire community.

S.3.F.1. **Adaptation Action:** Improve snow removal and storage systems, modeling after specific needs of residents. Look to community-based snow management systems already used by condominiums, town programs, and private snow storage.

S.3.F.2. **Adaptation Action:** Create equitable and affordable snow removal options for low-income and older residents.

S.3.F.3. **Adaptation Action:** Explore the establishment of local snow shoveling teams, and snow removal equipment lending programs that serve disadvantaged and vulnerable populations.

S.3.F.4. **Adaptation Action:** Explore funding opportunities to support local snow management efforts.

S.3.F.5. **Adaptation Action:** Create and implement a more effective snow removal and storage system to ensure benefits to all residents and visitors, including those populations with limited access to private snow removal equipment.

S.3.F.6. **Adaptation Action:** Ensure that vulnerable populations have access to appropriate mobility and

transportation options during severe winter weather events.

S.3.F.7. **Adaptation Action:** Improve snow removal systems to clear walkways for pedestrian traffic.

S.3.D.1.S.3.F.8. **Adaptation Action:** Explore innovative snow management strategies including use of geothermal resources.

S.3.F.9. **Adaptation Action:** Explore strategies to enable snow-load retrofits to structures that do not meet current standards.

S.3.F.10. **Action:** Promote access to fire hydrants during winter snow periods through greater community outreach and engagement with contractors to provide on-call services, when needed.

S.3.F.11. **Action:** Periodically review and update a mutual aid agreement with Caltrans for snow management and removal along Highway 203 located within Town limits.

S.3.F.12. **Action:** Promote retention of MLFPD contracts with CalFIRE to assist in hydrant access.

Avalanche

S.3.E.S.3.G. Policy: Development shall mitigate potential avalanche hazards.

S.3.F.S.3.H. Policy: Require an Avalanche Risk Assessment, as part of a use permit application, for all development proposed within the Snow Deposition Design Zone.

S.3.F.1.S.3.H.1. Action: The Town shall identify limits of avalanche run-out areas and potential avalanche hazard areas that may impact existing or new development.

S.3.G.S.3.I. Policy: Only open space or low-density seasonal occupancy uses may be permitted in high avalanche hazard zones, unless adequate mitigation is provided.

S.3.G.1.S.3.I.1. Action: Post warning signs on Town roads subject to avalanche hazards.

Geologic and Seismic

S.3.H.S.3.J. Policy: Restrict development in areas prone to geologic hazards (landslides, steep topography, slope instability, etc.), unless adequately mitigated. ~~with steep slopes.~~

S.3.I.S.3.K. Policy: Require geotechnical evaluations and implement mitigation measures prior to development in areas of potential geologic or seismic hazards, consistent with State requirements.

S.3.I.1. Action: ~~Minimize soil erosion and slope instability by amending Municipal Code to include advances in construction techniques.~~

S.3.K.1. Action: Inform residents and businesses regarding earthquake preparedness and response by coordinating with other agencies to promote public education efforts.

S.3.J.S.3.L. Policy: Promote expanded building requirements for commercial and residential structures that maintain structural integrity after a geologic and/or seismic event.

Flood

S.3.M. Policy: Maintain a flood hazard management program that is adaptable to new and changing conditions.

S.3.M.1. **Adaptation Action:** Promote green infrastructure strategies that increase flood mitigation capacity within the Town by improving flood control, surface retention, and subsurface water storage.

S.3.M.2. **Adaptation Action:** Identify and prioritize key neighborhoods for stormwater capture and green infrastructure development.

S.3.M.3. **Adaptation Action:** Develop projects that restore existing flood controls and riparian corridors.

S.3.M.4. **Adaptation Action:** Support tourism and protect natural resources by expanding active outdoor opportunities in green infrastructure areas.

S.3.N. Policy: Restrict development in flood prone areas and near perimeter of natural or engineered water bodies, unless adequately mitigated.

S.3.O. Policy: Require onsite stormwater retainage on new developments/redevelopments.

S.3.O.1. Action: Update Town Standards to include recommendations from the Storm Water Management Plan.

S.3.O.2. Action: Require commercial developments with more than 4,000 square feet of impervious space to provide 20% additional capacity for stormwater retention.

S.3.O.3. Action: Industrial uses shall provide an Industrial Stormwater Permit or waiver prior to issuance of a use permit.

S.3.P. Policy: Upgrade and modify existing storm drains and size new storm drains to convey 120% of current design requirements.

S.3.Q. **Adaptation Policy:** Improve resiliency of wastewater systems through grey water and green infrastructure improvements.

S.3.O.1. **Adaptation Action:** Encourage MCWD to continue Rrehabilitateion and maintainmaintenance of water andthe sewer systems as a preventative measure and to improve the system's resilience to flooding events.

S.3.O.2. **Adaptation Action:** Work with partners to assess wastewater system flow capacity and determine/ anticipate potential flooding risks/ damage and develop appropriate mitigation strategies, where feasible.

S.3.J.1.S.3.O.3.**Adaptation Action:** Encourage rain and stormwater capture gardens and other green spaces.

S.3.J.2.S.3.O.4.**Adaptation Action:** Assess and

improve stormwater storage.

S.3.K. ~~FirePolicy:~~ All construction shall comply with wildland fire safe standards, including standards established for emergency access, signing and building numbering, private water supply reserves available for fire use, and vegetation modification.

S.3.L. ~~Policy:~~ Involve local fire department in the development review process.

S.3.M. ~~Policy:~~ Minimize the incidence of fires by supporting the Mammoth Lakes Fire Protection District's (MLFPD) ability to respond to emergencies.

S.3.M.1. ~~Action:~~ Assist in establishment and implementation of appropriate funding sources so that the MLFPD is prepared to respond to and mitigate emergencies.

S.3.M.2. ~~Action:~~ Update Town specific policies that further protect people and property from the risks of wildland and structural fire hazards

Hazardous Materials

S.3.N.S.3.R. Policy: Provide for safe use and disposal of hazardous materials.

S.3.N.1.S.3.R.1. Action: Specify, develop and regulate sites for safe collection of hazardous wastes.

S.3.N.2.S.3.R.2. Action: Educate public about proper use and disposal of hazardous materials and waste through coordination with other public agencies.

S.3.N.3.S.3.R.3. Action: Effectively manage hazardous wastes by coordinating with regional and state agencies.

S.3.N.4.S.3.R.4. Action: Develop and implement a hazardous waste management, **emergency responses,** and minimization program by coordinating with other public agencies and private stakeholders.

~~S.3.O.S.3.S.~~ Policy: Require a Hazardous Materials Disclosure form from all development.

~~S.3.P.S.3.T.~~ Policy: Maintain and implement the Spill Prevention, Control and Countermeasure Plan for the Mammoth Yosemite Airport.

Carbon Dioxide

~~S.3.Q.S.3.U.~~ Policy: Support the Inyo National Forest’s effort to minimize potential carbon dioxide hazards.

~~S.3.Q.1.S.3.U.1.~~ Action: Collaborate with Inyo National Forest and United States Geological Survey (USGS) in developing public education efforts to inform residents and businesses regarding hazards of CO2 and high hazard areas.

Mineral Resource Management

~~S.3.R.S.3.V.~~ Policy: All mineral resource development projects shall meet or exceed applicable environmental regulations through implementation of the Surface Mining and Reclamation Act and Town environmental permitting.

~~S.3.S.S.3.W.~~ Policy: If geothermal power generating facilities are developed on National Forest lands west of State Scenic U.S. Highway 395, the Town shall work with the Mono County Local Agency Formation Commission to review the municipal boundary of the Town and shall annex development if appropriate.

Emergency Preparedness

S.4. GOAL: Maintain adequate emergency response capabilities.

S.4.A. Policy: Aid emergency vehicle access and emergency evacuation of all residents and visitors, including those with access and functional needs, by providing and maintaining secondary access routes to all portions of the community, consistent with the Mammoth Lakes Fire Protection District (MLFPD) requirements.

S.4.B. Policy: Maintain and periodically update an Emergency Management Plans.

S.4.C. Policy: Cooperate with emergency response

agencies to maintain preparedness to respond to all types of emergencies.

S.4.C.1. Action: Update and implement emergency response and evacuation plans.

S.4.C.2. Action: Develop and utilize an emergency notification and information system.

S.4.C.3. Adaptation Action: Expand the use of Spanish translation for information distributed to the public during a disaster event.

S.4.D. Policy: Maintain mutual aid agreements with federal, State, and local other police, fire, and emergency service response agencies.

S.4.E. Policy: Establish community facilities that can be used as a designated cooling, heating, or smoke relief center during inclement weather episodes.

S.4.F. **Adaptation Policy:** Prepare a comprehensive Town emergency response plan that identifies or creates a central and safe refuge location for emergency situations. Improve evacuation routes for emergency situations to serve both local residents and visitors.

S.4.F.1. **Adaptation Action:** Encourage local and regional partnerships to create evacuation routes, evacuation and shelter locations, and resiliency centers to provide safe refuge during emergencies.

S.4.F.2. **Adaptation Action:** Encourage residents on single-access roads to maintain emergency supplies to last at least three days.

S.4.F.3. **Adaptation Action:** Encourage local and regional partnerships to provide safe evacuation and shelter services that accommodate the needs of populations that are homeless and lack permanent shelter.

S.4.F.4. **Adaptation Action:** Plan transportation routes and transit systems that can support residents and

visitors during evacuation situations.

S.4.F.5. Adaptation Action: Encourage the incorporation of backup powered emergency response systems into evacuation centers (locations where _____ services.

S.4.F.6. Adaptation Action: Encourage local and regional partnerships to create an alert system that can be used by local residents and visitors. Encourage collaboration and partnership with local _____ enhancements.

S.4.F.7. Adaptation Action: Analyze the potential to create and reinforce emergency nodes and routes of transportation, including new or alternative routes for single-access roadways.

S.4.G. Adaptation Policy: Work with local and regional partners to launch a coordinated preparedness education campaign to encourage community members to take action to improve resilience.

S.4.G.1. Adaptation Action: Develop a public outreach and education program for homeowners and residents to better prepare for wildfire mitigation and protection.

Fire

Fire Response Services

The Mammoth Lakes Fire Department is a fire protection district (District) created in 1948 to serve the Mammoth Lakes community. The District boundaries encompass approximately 24 square miles of which only 4.6 sq miles is non-federal land (the land within the Town's Urban Growth Boundary). 90% of the urban growth boundary is developed with over 7,500 residents and over 1,500,000 sq. ft. of commercial development. The population can vary from the 7,500 permanent residents to over 40,000 residents and visitors during peak weekends and holidays. The District currently conducts fire safe regulation inspections for existing

and proposed developments within the Town. The Mammoth Community Water District supplies potable water to the Town. In accordance with their 2015 Urban Water Management Plan, fire flows to support fire suppression activities are 2,000 gallons per minute, which is deemed adequate by the District.

According to the 2019 Draft Community Wildfire Protection Plan (CWPP), wildfire response characteristics within the town include:

- Of the ten hazard zones identified in the CWPP, one zone located in the Lakes District is considered to have an extreme fire hazard rating.
- Most areas of the Town are located within 2 miles of an existing fire station
- Most areas of the Town are supplied by fire hydrants that support fire suppression activity
- While the municipal water system can support fire suppression, key recommendations are identified to better support suppression activities

In addition to these characteristics regarding wildfire risk and response, the 2019 Draft CWPP also recognized the training regimen that is either used or will be followed by the District.

Wildfire Hazard Severity Zones

The Town of Mammoth Lakes is located within the Inyo National Forest, in the eastern region of the Sierra Nevada mountain range. Portions of the area are heavily forested, which increases the vulnerability of the Town to wildfire. Figure 6 identifies the Fire Hazard Severity Zones designated by Cal FIRE, which illustrate the fire hazard severity within the Town's Urban Growth Boundary and surrounding areas. The Town includes Very High, High, and Moderate zones of fire hazard severity.

The Town's one area within the Very High Fire Hazard Severity Zone is isolated to the southwest corner of town just below the Lakes District. This area is designated for open space use and single family residential development.

For areas located within this zone, additional vegetation management requirements will be required:

Vegetation Management

Vegetation management is considered an effective method of wildfire hazard management and mitigation. To address vegetation management within the Town, a Fire Protection Plan (FPP) approved by the fire code official, is required for

all new development within the WUI area. FPPs are required to include mitigation strategies that take into consideration location, topography, geology, flammable vegetation, sensitive habitats/species, and climate of the proposed site. FPPs must address water supply, street name and address markings (consistent with Chapter 16.32 of the Mammoth Municipal Code), access, building ignition and fire resistance, fire protection systems and equipment, defensible space, vegetation management, and long-term maintenance. All required FPPs must be consistent with the requirements of the California Building Code Chapter 7A, International Wildland-Urban Interface Code, and the Town of Mammoth Lakes Municipal Code.

These vegetation management requirements are optional (but highly recommended) for portions of the Town located within the High and Moderate Fire Hazard Severity Zones.

Wildfire History

Wildfires a critical component to ecosystem health for this part of the State. Figure 7 identifies the historic wildfires that have occurred within the Town and surrounding areas. Based on this mapping five major wildfire incidents have occurred within or in close proximity to the Town, since 1966. While the perimeters have not significantly impacted properties within Town limits, current analysis within the 2019 Draft CWPP suggest that future risk to wildfire will increase based on available fuels and changes associated with climate change.

S.5. GOAL: Collaborate and coordinate with Mammoth Lakes Fire Protection District (MLFPD) fire response agencies. on fire planning, preparedness, and response.

S.5.A. Policy: Involve local fire department in the development review process. Continue to facilitate MLFPD's participation in the development review process and coordinate on conditions of approval.

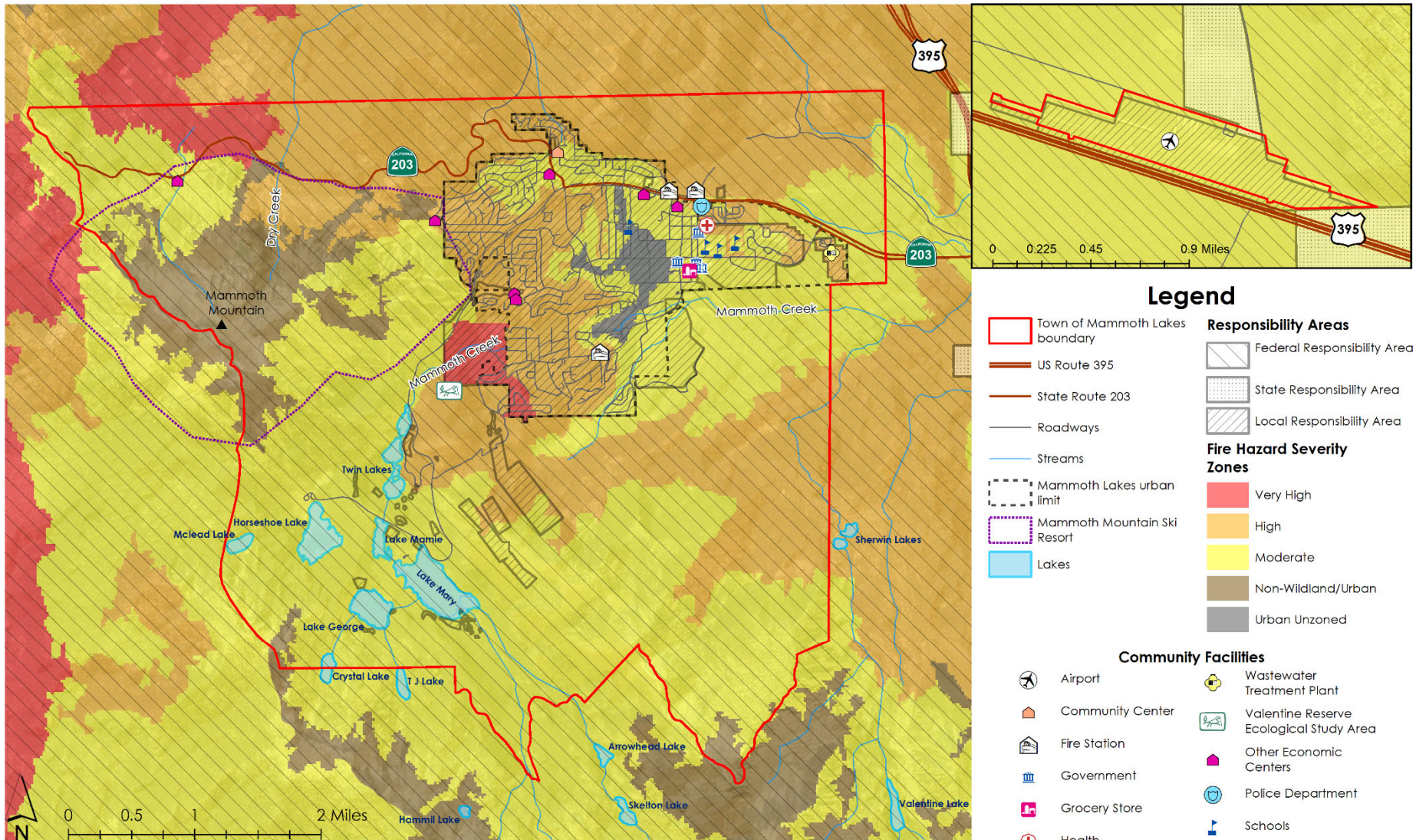
S.5.A.1. Action: Require all new development to comply with fire safety standards consistent with the requirements of the International Wildland-Urban Interface Code, and the Town of Mammoth Lakes Municipal Code, and support ratification of the MLFPD Local Ordinance, specifically Chapter 49, Requirements

for Wildland-Urban Interface Fire Areas, and requirements of the MLFPD and Town of Mammoth Lakes.

Action: Prepare wildfire mitigation landscape standards to address wildfire hazard within the Structure Ignition Zone.#

Figure 6

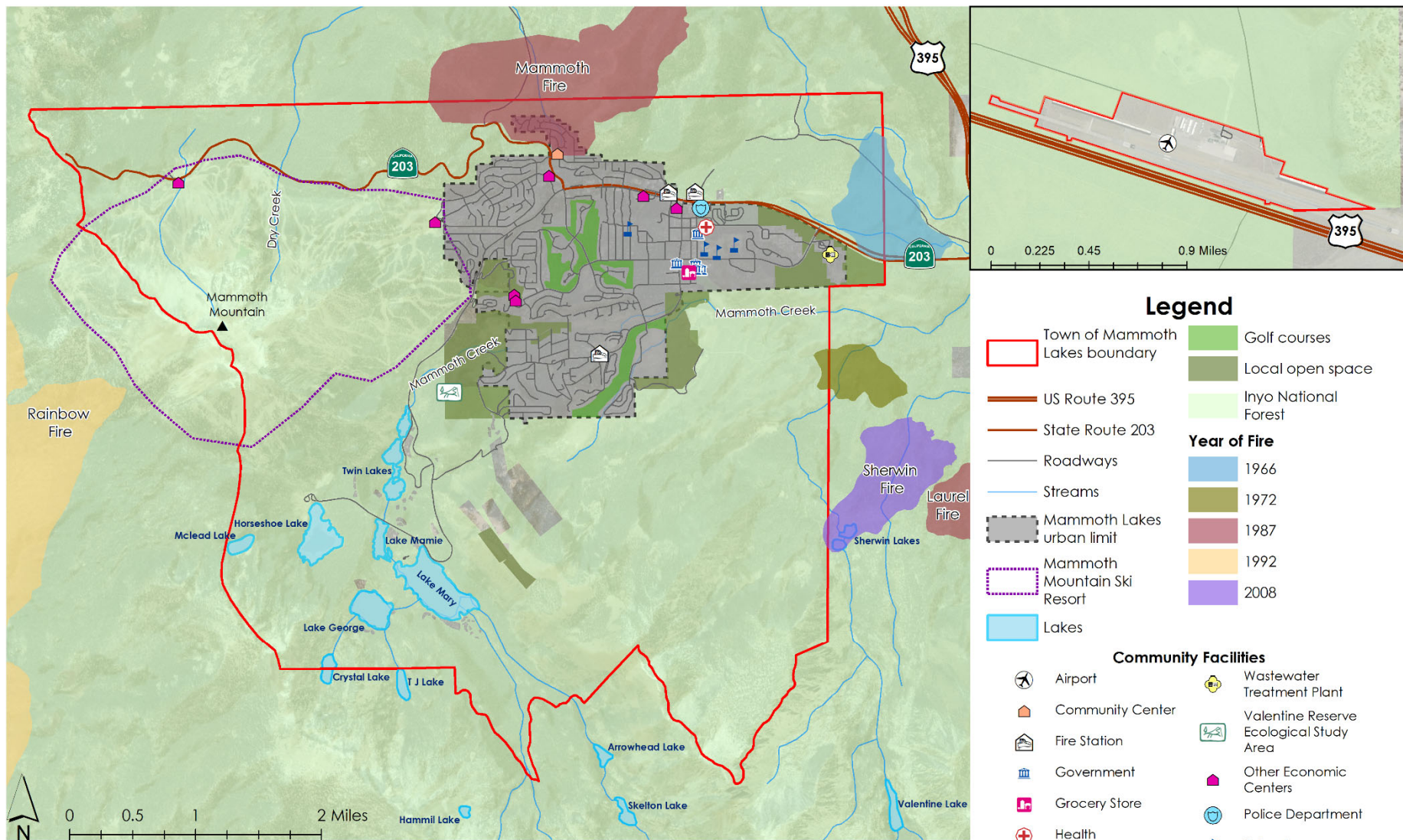
Fire Hazard Severity Zones and Responsibility Areas



Sources: CalFire 2018, Town of Mammoth Lakes 2019, Mono County 2019

Figure 7

Historic Wildfire Perimeters



Sources: CalFire 2018, Town of Mammoth Lakes 2019, Mono County 2019

Legend

| | |
|--------------------------------|----------------------|
| Town of Mammoth Lakes boundary | Golf courses |
| US Route 395 | Local open space |
| State Route 203 | Inyo National Forest |
| Roadways | |
| Streams | |
| Mammoth Lakes urban limit | |
| Mammoth Mountain Ski Resort | |
| Lakes | |

Year of Fire

| |
|------|
| 1966 |
| 1972 |
| 1987 |
| 1992 |
| 2008 |

Community Facilities

| | |
|------------------|---|
| Airport | Wastewater Treatment Plant |
| Community Center | Valentine Reserve Ecological Study Area |
| Fire Station | Other Economic Centers |
| Government | Police Department |
| Grocery Store | Schools |
| Health | |

S.5.A.2. Action: Prepare wildfire mitigation landscape standards to address wildfire hazard within the Structure Ignition Zone.

S.5.A.3. Action: Review the Zoning Code to ensure compatibility with wildfire mitigation landscape standards and modify if necessary.

S.5.B. Policy: Minimize the incidence of fires and/or impacts of fires by supporting the MLFPD's ability to respond to emergencies.

S.5.B.1. Action: Assist in establishment and implementation of appropriate funding sources so that the MLFPD is prepared to respond to and mitigate emergencies.

S.5.B.2. Action: Update Town-specific policies that further protect people and property from the risks of wildland and structural fire hazards.

S.5.C. **Adaptation Policy:** Improve wildfire management coordination between the Town, the Great Basin Unified Air Pollution Control District, Cal FIRE, and U.S. Forest Service (USFS), to mitigate economic impacts of prescribed or managed fires.

S.5.C.1. **Adaptation Action:** Improve fire management coordination between the Town and USFS by working to develop a prescribed and managed burning strategy that acknowledges the busy tourist season.

S.5.C.2. **Adaptation Action:** Encourage the USFS to consider community economic impact into the decision-making process.

S.6. GOAL: Promote community resilience through collaboration on the preparation of the Local Hazard Mitigation Plan, and Community Wildfire Protection Plan, and adoption of fire safe regulations and fire

S.6.A. Policy: Coordinate and participate with MLFPD on the preparation of a CWPP.

S.6.A.1. Action: Encourage MLFPD to align the Wildfire Hazard Assessment with future updates to CAL FIRE VHFHSZs.

S.6.A.2. Action: Encourage MLFPD to secure Cal FIRE recognition of TOML CWPP hazard mapping when it is more accurate than Cal FIRE VHFHSZ maps.

S.6.B. Policy: Evaluate development proposals for wildfire risk reduction.

S.6.B.1. Action: Determine whether additional conditions of approval should be required by evaluating allowable land uses that may pose a wildfire hazard.

S.6.B.2. Action: Encourage wildfire mitigation best practices in future developments.

S.6.B.3. Action: Evaluate future land uses/development applications for their potential impacts on risk reduction, such as the location of golf courses, community parks, and other uses that are fire-adapted or incorporate significant areas of fuel modification.

S.6.B.4. **Adaptation Action:** Work with MLFPD to create a Land Inventory using GIS to identify fuel reduction status and points of contact.

S.6.C. Policy: Link land use planning activities to hazard plans and post-disaster recovery.

S.6.C.1. Action: Work with MLFPD to facilitate implementation and ongoing updates of the CWPP.

S.6.C.2. Action: Work with partners to update the MJHMP, CWPP, and Safety Element periodically to incorporate the latest information and data and evaluate progress on actions.

- S.6.C.3. Action: Identify potential post-fire recovery assistance needs, including hazardous tree and debris removal and other landowner recovery measures.
- S.6.C.4. Action: Coordinate with other agencies to develop a Fire Hazards Response and Recovery Plan for the urban-wildland interface.
- S.6.D. Policy: Identify neighborhoods within and outside the Very High Fire Hazard Severity Zones, with limited access that may require secondary routes for first responders and the public during a fire event.
- S.6.D.1. Action: Evaluate alternative emergency access routes in neighborhoods that have single ingress/egress.
- S.6.D.2. Action: Develop an evacuation plan for high tourism seasons/events.
- S.6.D.3. Require new development in the VHFHSZ to provide adequate roadway widths and lengths in compliance with Chapter 7A requirements.
- S.6.E. Policy: Consider wildfire risk as part of trails and open space planning activities.
- S.6.E.1. Action: Work with local stakeholders to identify risks associated with trails and open space.
- S.6.E.2. Action: Incorporate healthy forest management policies into the ~~Open Space and Conservation Elements of the General Plan, future development, and including actions to integrate wildfire mitigation into trails and open space management practices~~planning.
- S.6.F. Policy: Work with MLFPD to identify fuel treatments that will reduce wildfire threat to the town.
- S.6.F.1. Action: Coordinate with the Valentine Reserve, Camp High Sierra, and other partners to identify potential fuel mitigation projects that reduce wildfire risk and support grant funding applications for these projects.
- S.6.F.2. Action: ~~Consider u~~Update s to building and landscaping requirements and protocols that integrate Cal Fire and MLFPD regulations and procedures.
- S.6.F.3. **Adaptation Action:** Encourage a drought tolerant and fire-resistant landscaping demonstration garden to encourage public participation in water conservation and fire preparedness efforts.
- S.6.F.4. Action: Identify long term maintenance actions and funding mechanisms for fuels management and modification, especially along critical roadways and adjacent to critical infrastructure.
- S.6.G. Policy: Increase funding for wildfire mitigation and protection.
- S.6.G.1. Action: Pursue grant funding opportunities to support private property owner vegetation clearing and treatments.
- S.6.G.2. **Adaptation Action:** Provide education and outreach for funding opportunities for residents and business owners.
- S.6.G.3. **Adaptation Action:** Advocate for use of State grants on federal land through the Mammoth Lakes Fire Safe Council.
- S.6.H. Policy: Ensure construction methods for new development reduce susceptibility to wildfire risk.
- S.6.H.1. Action: Research funding sources to implement a program to support wildfire mitigation retrofits for residential and commercial development.
- S.6.H.2. Action: Review and align Town Design Guidelines with wildfire construction

standards adopted by the Town and MLFPD.

S.6.H.3. Action: Analyze the relationship between wildfire risk and proximity to steep slopes and establish minimum slope setbacks for new construction areas as necessary.

S.6.I. **Adaptation Policy:** Incentivize **fire-proofing structural-hardening** of buildings and homes through increasing education, awareness, and retrofit funding opportunities.

S.6.I.1. **Adaptation Action:** Work with partners to provide education and outreach to private property owners to increase or improve defensible space, in addition to increases in individual preparedness and prevention measures.

S.6.J. Policy: Review and mitigate critical infrastructure for wildfire vulnerabilities.

S.6.J.1. Action: Periodically update the Town's critical infrastructure inventory to determine changes to vulnerability from wildfire.

S.6.J.2. Action: Coordinate with MLFPD to conduct parcel level assessments of critical infrastructure and provide mitigation recommendations.

S.6.J.3. Action: Develop mitigation requirements for future critical infrastructure and facilities.

S.6.J.4. Action: Identify ongoing maintenance and long-term integrity requirements and funding sources to address deficiencies in existing and planned critical infrastructure.

S.6.K. Policy: ~~Policy:~~ Support provision of adequate water flow throughout the town and provision of adequate water storage to meet future peak fire demand during times of peak domestic demands.

S.7. GOAL: Expand coordination and resource sharing

with the U.S. Forest Service, Cal Fire, Long Valley Fire Department, and Mammoth Lakes Fire Protection District.

S.7.A. Policy: Collaborate with local, State, and federal fire protection and land management agencies to advance wildfire mitigation and safety.

S.7.A.1. Action: Participate and support Fire Safe Council meetings, activities, and safety strategy.

S.7.A.2. Action: Continue to work with MLFPD to communicate on wildfire and planning topics.

S.7.A.3. Action: Continue to work with U.S. Forest Service and other federal land managers on fuel mitigation opportunities that benefit ecological goals and achieve wildfire risk reduction.

S.7.A.4. Action: Continue to work with CAL FIRE to coordinate mitigation activities and responsibilities.

S.7.B. Policy: Work with partners to promote integrated policies that consider water and air quality impacts associated with wildfire hazards and mitigation efforts.

S.7.B.1. Action: Ensure that wildfire risk areas in close proximity to water sources and waterways are prioritized for fuels treatment and mitigation.

S.7.B.2. Action: Work with partners to pursue grant funding sources focused on water quality and air quality as part of the community's wildfire strategy.

S.7.C. Policy: Develop a wildfire smoke hazard mitigation program smoke management initiative with local and federal partners that addresses residents, visitors, and vulnerable communities.

S.7.C.1. Action: Facilitate educational and relationship-building events that bridge public concerns on smoke with land

management policies to improve understanding and communication between federal land managers, local residents, and businesses.

S.7.C.2. Action: Work with partners to pursue grant funding to stockpile N95 masks, air purifiers, and water, and develop a protocol and procedures for the distribution and use of these masks to residents and businesses, when necessary.

S.7.C.3. **Adaptation Action:** Establish public outreach and education programs to inform residents, businesses, and visitors of air quality alerts.

S.7.C.4. **Adaptation Action:** Create or improve access to weatherization programs and other home fortification resources.

S.7.C.5. **Adaptation Action:** Work with partners to establish smoke relief centers that are accessible to populations that are homeless and lack permanent shelter.

Climate Change Adaptation and Resiliency

S.8. Adaptation GOAL: Increase the resiliency of residents, buildings and infrastructure, the natural environment, and Town economy to climate change hazards.

Human Resiliency

S.8.A. **Adaptation Policy:** Continue to work with the Mammoth Lakes Mosquito Abatement District to reduce the presence of mosquitos in the Town.

S.8.A.1. **Adaptation Action:** Expand the Mammoth Lakes Mosquito Abatement District to include all areas within the Town boundary.

S.8.B. **Adaptation Policy:** Continue to improve transportation network and mobility options to help people who walk or who use two-wheel-drive vehicles to travel.

S.8.B.1. **Adaptation Action:** Create reliable, year-round transportation systems and explore alternative transit options for extreme weather events such as heavy or wet snow, including centralized parking lots to increase transit ridership.

S.8.B.2. **Adaptation Action:** Implement comprehensive snow removal practices that benefit both motorized vehicle users and pedestrians, and those with limited access to private snow removal equipment.

S.8.C. **transportation—routesAdaptation Policy:** Encourage Mono County and local health advocates to create partnerships and programs to reduce food disparity and increase food security and equity.

S.8.C.1. **Adaptation Action:** Assess food security, food transportation routes, and vital services to strengthen and diversify local and regional food systems.

S.8.C.2. **Adaptation Action:** Work with local grocery stores, Mono County, and local health advocates to create a community food storage system.

S.8.C.3. **Adaptation Action:** Coordinate with local food banks and homeless organizations to increase food security and storage systems.

S.8.C.4. **Adaptation Action:** Collaborate with Mono County and local health advocates to establish emergency food storage system.

S.8.C.5. **Adaptation Action:** Create a more robust local food system by expanding year-round local agriculture to include indoor or greenhouse locations.

Built Environment Resiliency

S.8.D. **Adaptation Policy:** Work with Mammoth Community Water District to increase resiliency of

water systems for the Town and residents.

S.8.D.1. Adaptation Action: Collaborate with MCWD to improve and protect existing wells and water resources.

S.8.D.2. Adaptation Action: Support MCWD in the continuation of current drought policy and water restrictions with hourly water metering as available.

S.8.D.3. Adaptation Action: Encourage Mammoth Community Water District (MCWD) to add water wells to increase water supply reliability during drought years.

S.8.E. Adaptation Policy: Increase resilience of the energy supply and distribution system to improve grid reliability and energy independence through coordinated efforts with South California Edison (SCE)

S.8.E.1. Adaptation Action: Encourage the creation of a powered emergency response center (PERC).ⁱⁱⁱ

S.8.E.2. Adaptation Action: Encourage continued undergrounding of electrical lines and explore other ways to improve infrastructure to better resist impacts associated with wildfire.

S.8.F. Adaptation Policy: Encourage SCE to explore feasibility of supply side diversification, resilient electrical distribution infrastructure, and facilitate access to local, decentralized renewable energy.

S.8.F.1. Adaptation Action: Explore feasible local renewable energy options, including solar, wind, geothermal, and biomass, at a scale that fits -the community and local ecology.

S.8.F.2. Adaptation Action: Support biomass-to-energy facilities and systems locally and regionally that are scaled appropriately for the community and local ecology.

S.8.G. Adaptation Policy: Reduce energy system reliance on fossil fuels through demand side reductions, increasing energy efficiency, and renewable energy procurement.

S.8.G.1. Adaptation Action: Increase energy efficiency, renewable energy, and encourage incorporation of electrical battery storage.

S.8.G.2. Adaptation Action: Create policies that encourage solar and other renewable energy generation. (i.e. reducing permit fees, streamlining permitting process, etc.)

Economic Resiliency

S.8.H. Adaptation Policy: Support sustainable and feasible forest thinning byproduct economies and markets to create a revenue stream for mechanical treatments required to meet wildfire mitigation and protection needs.

S.8.H.1. Adaptation Action: Seek wood product innovation grants and financing mechanisms to build a market for biomass thinning.

S.8.H.2. Adaptation Action: Explore the feasibility of a biomass supply chain from fuel management plans, in order to expand biomass renewable energy.

S.8.H.3. Adaptation Action: Explore feasibility of establishing biomass renewable energy in Mammoth Lakes.

S.8.I. Adaptation Policy: Continue to fund Reserve for Economic Uncertainty (REU).

S.8.I.1. Adaptation Action: Use funding to maintain critical services during and after an emergency or disaster.

S.8.J. Adaptation Policy: Expand workforce preparedness training to include programs for restoring Town services after a major disaster or emergency.

S.8.J.1. **Adaptation Action:** Explore potential partnerships to expand workforce trainings to include emergency preparedness.

S.8.K. **Adaptation Policy:** Work with local partners to support business resiliency through preparedness education, trainings, and resources.

S.8.K.1. **Adaptation Action:** Increase access to emergency preparedness and mitigation resources specifically for businesses.

S.8.K.2. **Adaptation Action:** Support the business community in increasing their resiliency and ability to reopen after disaster occurs (access to FEMA, SBA, and other financial assistance).

S.8.K.3. **Adaptation Action:** Support efforts to expand business resiliency trainings, data backup plans, and other resources specific to business owners.

S.8.L. **Adaptation Policy:** Diversify jobs and the economy in Mammoth Lakes to reduce dependence on snow and the winter recreation economy.

S.8.L.1. **Adaptation Action:** Encourage education partners to increase Science, Technology, Engineering, Art/Design, and Math (STEAM) programs, training, and employment.

S.8.L.2. **Adaptation Action:** Facilitate the improvement of broadband connectivity to spur job growth and economic development.

S.8.L.3. **Adaptation Action:** Encourage Mammoth Mountain Ski Area to support additional recreational activities that are less dependent on snowpack levels.

Natural Environment Resiliency

S.8.M. **Adaptation Policy:** Increase the groundwater recharge potential within the Town boundaries

and surrounding areas.

S.8.N. **Adaptation Policy:** Work with MCWD to provide education and increase awareness around water conservation and protection.

S.8.N.1. **Adaptation Action:** Continue to encourage water-recycling programs.

S.8.N.2. **Adaptation Action:** Foster partnerships with the fishing and water recreation community to encourage water conservation and habitat protection.

S.8.O. **Adaptation Policy:** Encourage the creation of wildlife corridors and migration paths (i.e. overpass & underpass) to accommodate migration patterns of animals and plants.

S.8.O.1. **Adaptation Action:** Create areas that provide wildlife corridors and habitat to accommodate animal migration patterns.

S.8.P. **Adaptation Policy:** Identify benefits of ecosystem services^{iv} and improve public education and outreach to protect and conserve local and regional habitat.

S.8.P.1. **Adaptation Action:** Support projects focused on minimizing the impact of summer recreation on critical habitat.

S.8.P.2. **Adaptation Action:** Work with partners to improve education surrounding the migration of new plant and animal species to the area including the effects of tourism and recreation on the natural environment.

S.4.E.S.8.O. **Adaptation Policy:** Support local partners to conserve and expand healthy conifer cover in forested areas to protect ecosystem services including carbon sequestration, soil retention, and water supply.

Education

S.5.S.9. GOAL: Support high quality educational

services and life-long learning resources within the community.

S.5.A.S.9.A. Policy: Encourage development and enhancement_____of school sites and other____administrative, educational and recreational facilities.

S.5.A.1.S.9.A.1. Action: Maximize use of educational facilities by creating broader partnerships and adopting joint-use agreements.

S.5.B.S.9.B. Policy: Support expansion of____educational opportunities within the community.

Public Facilities and Services

S.6.S.10. GOAL: Enhance quality of life by encouraging and supporting high quality facilities and services.

S.6.A.S.10.A. Policy: Establish Level of Service standards for facilities, operations and services and resource management.

S.10.A.1. Action: Annually review and update the Town of Mammoth Lakes Master Facilities Plan, Capital Improvement Plan and the Development Impact Fee Schedule.

S.10.B. Adaptation Policy: Build partnerships between public, private, and nonprofit sectors to provide critical services to vulnerable populations and foster community connections.

S.10.B.1. Adaptation Action: Use State incentives and programs for weatherizing support.

S.10.C. Adaptation Policy: Coordinate with California Public Utilities Commission (CPUC), telecommunication, and internet service providers to improve resilience and redundancy of telecommunication and broadband infrastructure.

S.10.C.1. Adaptation Action: Work with CPUC, telecommunication, and internet service providers to modernize and strengthen

radio and broadband systems, and reinforce barriers to protect vulnerable infrastructure, and open up access for emergency use.

S.10.D. Adaptation Policy: Create redundancy in communication systems

S.10.D.1. Adaptation Action: Capitalize on Digital 395 infrastructure to enhance communication capabilities and redundancies.

S.10.D.2. Adaptation Action: Improve and expand channels of communication between the Town, emergency service providers and the community.

S.10.E. Adaptation Policy: Work with regional partners to identify a technology backup power system and energy resource center to provide alternative telecommunication services.

S.10.E.1. Adaptation Action: Designate community buildings for additional backup services, connections, and power.

~~S.3.J. Policy: Minimize the incidence of fires by supporting the Mammoth Lakes Fire Protection District's (MLFPD) ability to respond to emergencies.~~

~~S3J1. Action: Assist in establishment and implementation of appropriate funding sources so that the MLFPD is prepared to respond to and mitigate emergencies.~~

~~S3J2. Action: Update Town specific policies that further protect people and property from the risks of wildland and structural fire hazards.~~

~~S.3.K.S.3.J. Policy: Support provision of adequate water flow throughout the town and provision of adequate water storage to meet peak fire demand during times of peak domestic demands.~~

~~S.3.L. Policy: Support creation and maintenance of firebreaks in coordination with Inyo National~~

- ~~i Green Infrastructure: Green infrastructure is an approach to water management that protects, restores, or mimics the natural water cycle. (American Rivers 2017)~~
- ~~ii Structure Ignition Zone: The area within zero to ten feet of a structure that is crucial for wildland fire survival.~~
- ~~iii Powered Emergency Response Center (PERC): An emergency response center that is powered by a microgrid or alternative sustainable form on energy.~~
- ~~iv Ecosystem Services: The important benefits for human beings that arise from healthy and functioning ecosystems, including production of oxygen, water filtration, and recreational opportunities.~~

~~Forest and other land management agencies.~~

