

# SAFETY ELEMENT

## INTRODUCTION

The Safety Element provides the framework to reduce risks associated with a range of environmental and human-caused hazards that may pose a risk to life and property in Red Bluff. Inclusion of the Safety Element in the General Plan is required by State law.

The Safety Element includes goals, policies, and actions to protect residents, businesses, visitors, and land uses from hazards, and includes the following topics:

- Geologic and Seismic Hazards
- Flooding and Flood Protection
- Emergency Preparedness and Response
- Fire Protection Services
- Fire Protection Services
- Hazardous Materials
- Climate Resiliency and Adaptation
- Airport Operations
- Wildfire Hazards

The Safety Element supports the City's participation in regional and subregional planning efforts including the Tehama County Multi-Jurisdictional Hazard Mitigation Plan (MJHMP), which is a multi-jurisdictional plan that includes the City of Red Bluff.

Background information regarding safety and hazards is provided in Chapter 4 of the *General Plan Existing Conditions Report*. A Hazards map depicting flood and fire hazard within Red Bluff is included on Figure SA-1.



## GOALS AND POLICIES

### GEOLOGIC AND SEISMIC HAZARDS

#### GOAL SA-1

Minimize community exposure to geologic and seismic hazards.

#### Policies

- SA 1.1:** Require review and mitigation of all potential geologic and seismic hazards for new development in identified hazardous areas.
- SA 1.2:** Ensure that all new development and construction is in conformance with applicable California Building Code standards related to geologic and seismic safety.
- SA 1.3:** Avoid placement of critical structures, public facilities, and high- occupancy buildings in areas prone to ground failure during an earthquake.
- SA 1.4:** Require adequate mitigation on sites with landslide potential or erodible soils to protect against injury and property damage and to assure a standard of development that will not accelerate runoff or degrade water quality.
- SA 1.5:** Require approval of final site development plans, including drainage and erosion control plans, in areas subject to high erosion hazard potential prior to authorization of any initial grading and clearing activities.

#### Actions in Support of Goal SA-1

- SA-1a:** *Require adherence to the requirements of the California Building Code (California Code of Regulations, Title 24) during the plan check review process.*
- SA-1b:** *Periodically review the structural integrity of all existing City-owned critical facilities and, if any facilities are found unsatisfactory, take steps to ensure structural integrity and safety.*
- SA-1c:** *Continue to maintain and provide an inventory of all natural hazards, including active faults, Alquist-Priolo Special Study Zones, hazardous soil conditions, floodplains, and dam failure inundation areas.*
- SA-1d:** *Require protection of exposed soil from erosion during the wet/rainy season (October 15th until April 15th). Require topsoil to be stockpiled and reapplied upon completion of grading to promote vegetative regrowth where feasible.*
- SA-1e:** *Require replanting of vegetation on all slopes prone to erosion and/or instability following development. Drought-resistant plant types shall be used for landscaping on post-development slopes where excess watering might induce land slippage or soil erosion.*



- SA-1f: Prohibit earthmoving operations in areas of high soil and slope erosion hazard potential during the wet/rainy season (October 15th until April 15th) unless preauthorized. If such activities are allowed, measures for sediment containment and erosion control must be in place at the conclusion of each day's work.*
- SA-1g: As part of any new development tentative map, review preliminary grading plans and ensure they are designed to control erosion and prevent sedimentation or damage to off-site properties.*



## FLOODING AND FLOOD PROTECTION

### GOAL SA-2

Reduce risks to human life, property, and public services associated with flooding.

#### Policies

- SA 2.1:** Support and participate in planning efforts undertaken at the local, regional, State, and federal levels to improve flood management facilities and dam safety.
- SA 2.2:** Require all new development projects to demonstrate how stormwater runoff will be detained or retained on-site, treated, and/or conveyed to the nearest drainage facility as part of the development review process. Project applicants shall demonstrate that project implementation would not result in increases in the peak flow runoff to adjacent lands or drainage facilities that would exceed the design capacity of the drainage facility or result in an increased potential for off-site flooding.
- SA 2.3:** Ensure that construction activities and new development do not serve to aggravate the flooding potential of the streams and creeks that flow through Red Bluff, especially at times of peak flow.
- SA 2.4:** Ensure that construction activities and new development projects will not result in adverse impacts to existing properties and flood control and drainage structures.
- SA 2.5:** Regulate land uses in flood-prone areas and allow development in those areas only with appropriate mitigation.
- SA 2.6:** Promote community awareness regarding the severity and extent of potential local flooding.
- SA 2.7:** Maintain and periodically update City flood safety plans, floodplain management ordinances, zoning ordinance, building codes, and other related sections of the Municipal Code to reflect Safety Element goals, policies and standards, applicable federal and State law, and National Flood Insurance Program requirements.
- SA 2.8:** Ensure that the impacts of potential flooding are adequately analyzed when considering areas for future urban expansion.
- SA 2.9:** Update flood hazard maps as necessary to reflect impacts from climate change in terms of long-term flood safety and long-term flood event probabilities.



## Actions in Support of Goal SA-2

- SA-2a: Use the FEMA 100-year flood profile for all streams and creeks as a basis for evaluating future land use in floodplain areas.*
- SA-2b: Continue to review projects in flood hazard areas to ensure compliance with Municipal Code Chapter 26 (Flood Damage Prevention).*
- SA-2c: Monitor changes in federal and State laws and regulations related to local flood protection, including the National Flood Insurance Program, and incorporate necessary changes into the Municipal Code and building codes as required, and ensure that the City's regulations continue to require that new development within flood hazard areas is consistent with this Safety Element and is required to meet the flood protection requirements of State law, including but not limited to, Government Code Sections 65007, 65865.5, 65962 and 66474.5.*
- SA-2d: As part of the development review process require new development projects to prepare hydraulic and storm drainage studies as necessary to define the net increase in stormwater run-off resulting from construction, and require mitigation to reduce impacts. Drainage and grading plans shall identify BMP protections and include standards established and recommended by the City that shall be incorporated into development.*
- SA-2e: Periodically review the conditions of bridges, culverts, canals, and other flood control and stormwater conveyance infrastructure, and when feasible include necessary improvements within the capital improvement plan to increase safety and the adequate conveyance of stormwater.*
- SA-2f: Maintain culverts and other drainage facilities on public roads, and eliminate obstructions from existing drainage ways.*



## EMERGENCY PREPAREDNESS AND RESPONSE

### GOAL SA-3

Protect life, safety, and property throughout the community by ensuring emergency preparedness.

#### Policies

- SA 3.1:** Ensure that new critical facilities are located in areas that minimize exposure to potential natural hazards.
- SA 3.2:** Ensure that critical facilities are properly supplied and equipped to provide emergency services.
- SA 3.3:** Support local and regional disaster planning and emergency response planning efforts, and look for opportunities to collaborate and share resources with other municipalities in the region.
- SA 3.4:** Develop programs in cooperation with other public agencies to increase public awareness of hazards in Red Bluff and to educate residents on actions that can help to minimize injury and property loss before, during, and after an emergency.
- SA 3.5:** Maintain effective mutual aid agreements for police, fire, medical response, and other functions as appropriate.

#### Actions in Support of Goal SA-3

- SA-3a:** *Coordinate with the Tehama County Sheriff's Office of Emergency Services (O.E.S.) and other local agencies, as necessary, to participate in and implement the Tehama County Multi-Jurisdictional Hazard Mitigation Plan.*
- SA-3b:** *Conduct periodic emergency response training exercises and/or participate in regional exercises to ensure that key community members, local leaders, and emergency response personnel are adequately trained and prepared for emergency situations. Critical facilities within Red Bluff should also be assessed annually to ensure they are properly equipped and supplied.*
- SA-3c:** *Provide emergency preparedness information on the City's website and encourage residents and community leaders to participate in disaster training programs.*

### Critical Facilities

*Critical Facilities* refers to essential public facilities, such as hospitals, fire stations, emergency communications facilities, and emergency shelters identified for disaster relief and response.



- SA-3d: Develop and annually update an emergency contact list and emergency response information on the City's website. The information should include emergency access routes, available emergency resources, and contact information for emergency responders.*
- SA-3e: As part of the development review process, consult with the Fire Department in order to ensure that the project provides adequate emergency access.*
- SA-3f: Seek funding from State, federal, and other sources to assist in emergency management planning, including community education about defensible space and outreach describing public procedures and evacuation routes in the event of an emergency or natural disaster, with a focus on reaching at-risk populations.*
- SA-3g: Review procedures for local implementation of the Tehama County Emergency Operations Plan and help to educate the community on the need for emergency preparedness.*
- SA-3h: Coordinate with Tehama County periodically to update the Multi-Jurisdiction Hazard Mitigation Plan (LHMP), as needed to meet existing and projected future emergency services needs throughout Red Bluff.*
- SA-3i: Continue to implement the Local Hazard Mitigation Plan Mitigation Actions for Red Bluff.*



## FIRE PROTECTION SERVICES

### GOAL SA-4

Maintain a safe community through the provision of high-quality fire, and emergency medical services.

#### Policies

- SA 4.1:** Maintain adequate levels of service for personnel, equipment, and facilities for fire protection services.
- SA 4.2:** Require all new development to be constructed in accordance with fire safety standards contained in the locally-adopted California Fire Code and California Building Code.
- SA 4.3:** Ensure that adequate water supplies are available for fire suppression throughout the City and that water delivery systems are properly maintained.
- SA 4.4:** Require new development to construct and fund fire suppression infrastructure and equipment needed to provide adequate fire protection services.
- SA 4.5:** Require all new development, including single-family dwellings on existing parcels of record, to provide adequate access for fire protection and emergency vehicle access.
- SA 4.6:** In coordination with the Fire Department, identify and maintain fire hazard reduction projects, including community fuel breaks and private road and public road clearance.
- SA 4.7:** Promote continuing training of Fire Department personnel in hazardous materials handling, response, and emergency medical techniques and procedures.

#### Actions in Support of Goal SA-4

- SA-4a:** *As part of the development review process, consult with the Fire Department in order to ensure that development projects facilitate adequate fire services and fire prevention measures.*
- SA-4b:** *Continue to require all new development to be reviewed for consistency with the relevant State and local Fire Safe Regulations, and the most recently adopted fire code standards.*
- SA-4c:** *Proactively enforce the City's Weed Abatement Ordinance to reduce fuel loads and maintain defensible space in order to minimize risk of wildland fires.*
- SA-4d:** *To the maximum extent feasible conduct periodic inspections of vacant properties to ensure that dry weeds and other combustible fuels are not permitted to accumulate.*





- SA-4e: Promote cooperation between the Red Bluff Fire Department, Tehama County Fire Department, the California Department of Forestry and Fire Protection (CAL FIRE), the U.S. Forest Service, and other agencies and fire districts for training and mutual aid.*
- SA-4f: Review and require all projects to adhere to Municipal Code requirements to ensure adequate safety services. These include, but are not limited to, Chapter 8 (Fire Department) which describes the duties of the Fire Department and the responsibilities of the fire chief in determining imminent health and safety hazards, and the powers associated with such a determination, and Chapter 20 (Subdivisions) which describes the requirements of a subdivider to supply water and provide fire protection within the subdivision.*



## POLICE PROTECTION SERVICES

### GOAL SA-5

Ensure a safe community through the provision of quality police protection for the community and visitors alike.

#### Policies

- SA 5.1:** Maintain adequate levels of service for personnel, equipment, and facilities for police protection services.
- SA 5.2:** Incorporate crime prevention measures into development planning to the extent feasible.
- SA 5.3:** Promote continuing training of Police Department personnel in emergency response and medical techniques and procedures.
- SA 5.4:** Strive to achieve and maintain excellent police services in the areas of calls for service response times, and demand for service.
- SA 5.5:** Work to expand police facilities, outposts, equipment, and support personnel.
- SA 5.6:** Work to increase crime-fighting technologies such as traffic and vehicle reading devices towards crime reduction.
- SA 5.7:** Promote and support programs to expand opportunities for positive police and youth interactions.
- SA 5.8:** Strive to maintain public confidence in the Police Department and the services provided.

#### Actions in Support of Goal SA-5

- SA-5a:** *As part of the development review process, consult with the Police Department in order to ensure that development projects do not impair the provision of law enforcement services through inappropriate site design. The use of physical site planning as an effective means of preventing crime, including lighting, visibility, and video surveillance requirements shall be determined by the Department, where applicable.*
- SA-5b:** *Pursue funding opportunities that will expand the Police Department's services and activities including a Crisis Intervention Response Team (CIRT), Bicycle patrols, Neighborhood Police Unit, School Resource Officers, Community Work Programs, Homeless Liaison Officer, and other efforts.*



## HAZARDOUS MATERIALS

### GOAL SA-6

Protect residents and the environment from hazardous materials.

#### Policies

- SA 6.1:** Utilize resources from the Tehama County Environmental Health Department and the Tehama County Integrated Waste Management Task Force (TCIWMTF) when addressing how to handle waste or materials that pose a threat to human health or the environment by being toxic, reactive, corrosive, or flammable.
- SA 6.2:** Encourage local producers and users of hazardous materials to reduce the amounts of hazardous materials generated.
- SA 6.3:** Encourage the use of pesticides consistent with State and federal requirements and product-specific safety recommendations.
- SA 6.4:** Require hazardous waste generated within the City to be disposed of in a safe manner, consistent with all applicable local, State, and federal laws.
- SA 6.5:** Require hazardous materials to be stored in a safe manner, consistent with all applicable local, State, and federal laws.
- SA 6.6:** Require compliance with the Tehama County Environmental Health Department's hazardous materials and hazardous waste programs.

#### Actions in Support of Goal SA-6

- SA-6a:** *Work with the Tehama County Solid Waste Management Agency and the City's waste hauler to require acceptance of oils, paints, and other recyclable hazardous materials.*
- SA-6b:** *Coordinate with the Tehama County Environmental Health Department as the Certified Unified Program Agency (CUPA) to ensure that businesses that handle hazardous materials prepare and file a Hazardous Materials Business Plan (HMBP). The HMBP shall consist of general business information, basic information on the location, type, quantity, and health risks of hazardous materials, and emergency response and training plans.*
- SA-6c:** *Provide educational opportunities for generators of small quantity, household, and urban agriculture waste products regarding their responsibilities for source reduction and proper and safe hazardous waste management and disposal.*



- SA-6d: Provide information about drop-off programs for the local disposal of household hazardous waste offered in Tehama County. The availability of the programs should be widely publicized throughout the community.*
- SA-6e: Refer all permits for new projects or major additions to existing uses located on sites identified by the State as having or containing likely hazardous substances or materials to the Tehama County Environmental Health Department to ensure compliance with applicable State and local regulations. If warranted, identify and require mitigation measures to ensure the exposure to hazardous materials from historical uses has been mitigated to acceptable levels consistent with EPA and/or California Department of Toxic Substances Control standards.*



## CLIMATE RESILIENCY AND ADAPTATION

### GOAL SA-7

Minimize risks to life, property, and the environment through climate adaptation strategies that enhance and promote community resiliency.

#### Policies

- SA 7.1:** Promote a well-prepared City that can effectively overcome natural disasters and scarcity of resources due to climate change.
- SA 7.2:** Collaborate with local, regional, State, and/or federal jurisdictions and agencies on climate resiliency and adaptation strategies.
- SA 7.3:** Consider climate change impacts and adaptive responses in long-term planning and current development decisions.
- SA 7.4:** Implement necessary actions and programs to improve preparation and response for the most vulnerable community members, areas, and infrastructure.

#### Actions in Support of Goal SA-7

- SA-7a:** *Provide information and resources to the public and businesses regarding steps the City is taking to address the issue of climate change.*
- SA-7b:** *Coordinate with utility providers to protect interconnected infrastructure.*
- SA-7c:** *Periodically assess and monitor the effects of climate change and the associated levels of risk to the community in order to adapt to changing climate conditions.*
- SA-7d:** *Keep the public informed as to the location of important emergency facilities, such as reception centers, cooling centers, and emergency shelter points of distribution (PODs) for administering medical countermeasures (i.e. vaccines or medical testing), and distribution of emergency supplies and/or food.*

### Climate Resiliency

The ability of human and ecological systems to adapt to climate-related stresses while retaining the same basic structure and way of functioning, including the capacity of those systems to cope with, adapt to, and recover fully or partially from climate-related stress and change.

### Climate Adaptation

The process of adjustment to actual or expected climate change and its effects. At the local level this means actions that the City can take to reduce the impacts to its population and infrastructure resulting from climate change impacts.



## AIRPORT OPERATIONS

### GOAL SA-8

Minimize risks to the community from hazards associated with airport operations.

#### Policies

**SA 8.1:** Ensure that land uses within the vicinity of the Red Bluff Municipal Airport are compatible with airport operations.

**SA 8.2:** Ensure that new development proposals do not result in encroachments into future airport expansion areas and do not result in adverse impacts to airport operations.

#### Actions in Support of Goal SA-8

**SA-8a:** *As part of the development review process, new development and expansion proposals within the vicinity of the Red Bluff Municipal Airport shall be:*

- *Reviewed for consistency with setbacks, land use restrictions, and height as determined by the Federal Aviation Administration (FAA) and the Tehama County Airport Land Use Commission; and*
- *Provided to the Airport Land Use Commission for review.*

### Airport Land Use Plan (ALUP)

Land uses surrounding airports and airstrips can result in hazards to aircraft as well as hazards to persons on the ground associated with aircraft accidents and community exposure to noise.

An ALUP is a guidance document used by local agencies and property owners to promote land uses in the vicinity of airports that are compatible with airport operations.



## WILDFIRE HAZARDS

### GOAL SA-9

Minimize risks to life and property from wildfire in both developed and undeveloped areas of the city.

#### Policies

- SA 9-1:** Require development to reduce risks to life and property associated with wildfire events through adherence to the relevant fire safe standards established in the Red Bluff Municipal Code, City Ordinances, and other applicable regulations that meet or exceed title 14, CCR, division 1.5, chapter 7, subchapter 2, articles 1-5 (commencing with section 1270) (SRA Fire Safe Regulations) and title 14, CCR, division 1.5, chapter 7, subchapter 3, article 3 (commencing with section 1299.01) (Fire Hazard Reduction Around Buildings and Structures Regulations). New development, which does not meet the applicable State requirements, shall not be permitted.
- SA 9-2:** Support management of forested lands including fuel management strategies in wildland areas to reduce wildfire hazards.
- SA 9-3:** Require adequate water source and supply systems, including adequate fire flows, and location of anticipated water supply prior to development approvals in areas that include High or Very High Fire Hazard Severity Zones (FHSZs), as defined by CAL FIRE.
- SA 9-4:** New development projects within and adjacent to wildland, forest, or areas or that are included within a Very High Fire Hazard Severity Zone (VHFHSZ) shall prepare and implement wildland fire protection plans that include the following components:
1. Risk Analysis
  2. Fire Response Capabilities
  3. Fire Safety Requirements – Defensible Space, Infrastructure, and Building Ignition Resistance
  4. Mitigation Measures and Design Considerations for Non-Conforming Fuel Modification

### Tehama County Multi- Jurisdiction Hazard Mitigation Plan (MJHMP)

The Multi-Jurisdictional Local Hazard Mitigation Plan (LHMP) for the City of Red Bluff planning area was developed in accordance with the Disaster Mitigation Act of 2000 (DMA 2000) and followed FEMA’s Local Hazard Mitigation Plan guidance. The LHMP incorporates a process where hazards are identified and profiled, the people and facilities at risk are analyzed, and mitigation actions are developed to reduce or eliminate hazard risk. The implementation of these mitigation actions, which include both short and long-term strategies, involve planning, policy changes, programs, projects, and other activities. The Plan is available at:

<https://mitigatehazards.com/tehamacounty-hmp-documents/>



5. Wildfire Education, Maintenance, and Limitations
6. Evacuation Planning.

- SA 9-5:** Continue to implement the Tehama County Multi-Jurisdiction Hazard Mitigation Plan (MJHMP) to reduce risks associated with wildfire, and review new development proposals with High and Very High Fire Hazard Zones for consistency with the MJHMP.
- SA 9-6** Continue to support wildfire planning efforts and programs including the Tehama County Community Wildfire Protection Plan (CWPP) to reduce risks associated with wildfire throughout the Planning Area, and review new development proposals with High and Very High Fire Hazard Zones for consistency with the CWPP.
- SA 9-7** Prior to allowing redevelopment in an area devastated by wildfire, the City shall review safety conditions and require any redevelopment to meet all applicable State and local fire safe development standards.
- SA 9-8** Ensure adequate evacuation routes for new and existing development, and ensure new residential developments located in High and Very High Fire Hazard Zones have at least two emergency evacuation routes.
- SA 9-9** Discourage new development within Very High Fire Hazard Severity Zones (VHFHSZ) and on the periphery of urban areas where wildfire risks are high due to natural factors or provide adequate mitigation measures to address the elevated fire threat.
- SA 9-10** Locate new essential public facilities, such as fire stations, police substations, and emergency evacuation centers outside of High and Very High Fire Hazard Severity Zones.
- SA 9-11** Support management and conservation activities to reduce fire hazards, including fire hazard reduction, fuel management, and long-term maintenance strategies, establishment and maintenance of community fuel breaks, public and private road maintenance and vegetation clearance that meet or exceed Public Resources Code Section 4291 requirements, home hardening, and coordinate with the fire department and property owners to implement management and conservation activities on an on-going basis.

### **Actions in Support of Goal SA-9**

- SA-9a** *Review, and revise if necessary, the City's Development Standards to require fire protection methods, including fuels management, adequate water supply, and road and driveway standards for new development and expansion projects in areas of high and very high Fire Hazard Severity Zones that meet or exceed the requirements established by the State Fire Safe Regulations. Fire protection methods may consist of the establishment of "defensible space" around structures, using fire resistant ground cover, building with fire-resistant roofing materials, fuel load reductions, visible home and street*





*addressing and signage, and other appropriate measures.*

*SA-9b Consult with CAL FIRE during the review of development applications for projects within high and very high Fire Hazard Severity Zones in areas adjacent to SRAs.*

*SA-9c Implement State recommendations for fire prevention in Fire Hazard Severity Zones.*

*SA-9d Create public outreach and awareness programs to reach at-risk populations, promote the development and awareness of evacuation routes, and to promote the development of “defensible space” around structures using areas free of fuel loads, fire resistant landscaping and fire-resistant building materials. Any new development within VHFHSZs shall be required to implement fuel modification efforts to reduce flammable materials around structures, homes, and subdivisions consistent with California Code, Public Resources Code - PRC § 4291.*

*SA-9e Participate in regional efforts to periodically review and update key emergency and fire protection plans, including but not limited to the Tehama County Multi-Jurisdiction Hazard Mitigation Plan (MJHMP) and the Tehama County Community Wildfire Protection Plan (CWPP). Future updates to these plans shall consider new growth and policy direction facilitated by this General Plan, and shall meet all applicable State requirements and incorporate industry best practices for fuel reduction and management, fuel breaks, fire safety, emergency evacuation, and post-fire recovery.*

*SA-9f Continue to work with regional transit agencies to support and prioritize transportation improvements that improve emergency evacuation, and support emergency preparedness goals.*

*SA-9g Consistent with Policy SA 9-4, require new development projects to prepare and implement wildland fire protection plans that meets all applicable State requirements.*

*SA-9h Utilize the most current adopted Fire Hazard Severity Zone (FHSZ) maps from the Office of the State Fire Marshal (OSFM). Available at: <https://osfm.fire.ca.gov>.*

### The Tehama County Community Wildfire Protection Plan (CWPP)

The Tehama County Community Wildfire Protection Plan (CWPP) was developed as a means of describing current fire related conditions within Tehama County, identifying public and private assets threatened by wildfire, and assessing currently in-place infrastructure developed in order to protect those assets. The CWPP is Available at: <https://www.tehamacountyrcd.org/community-wildfire-protection-plans>

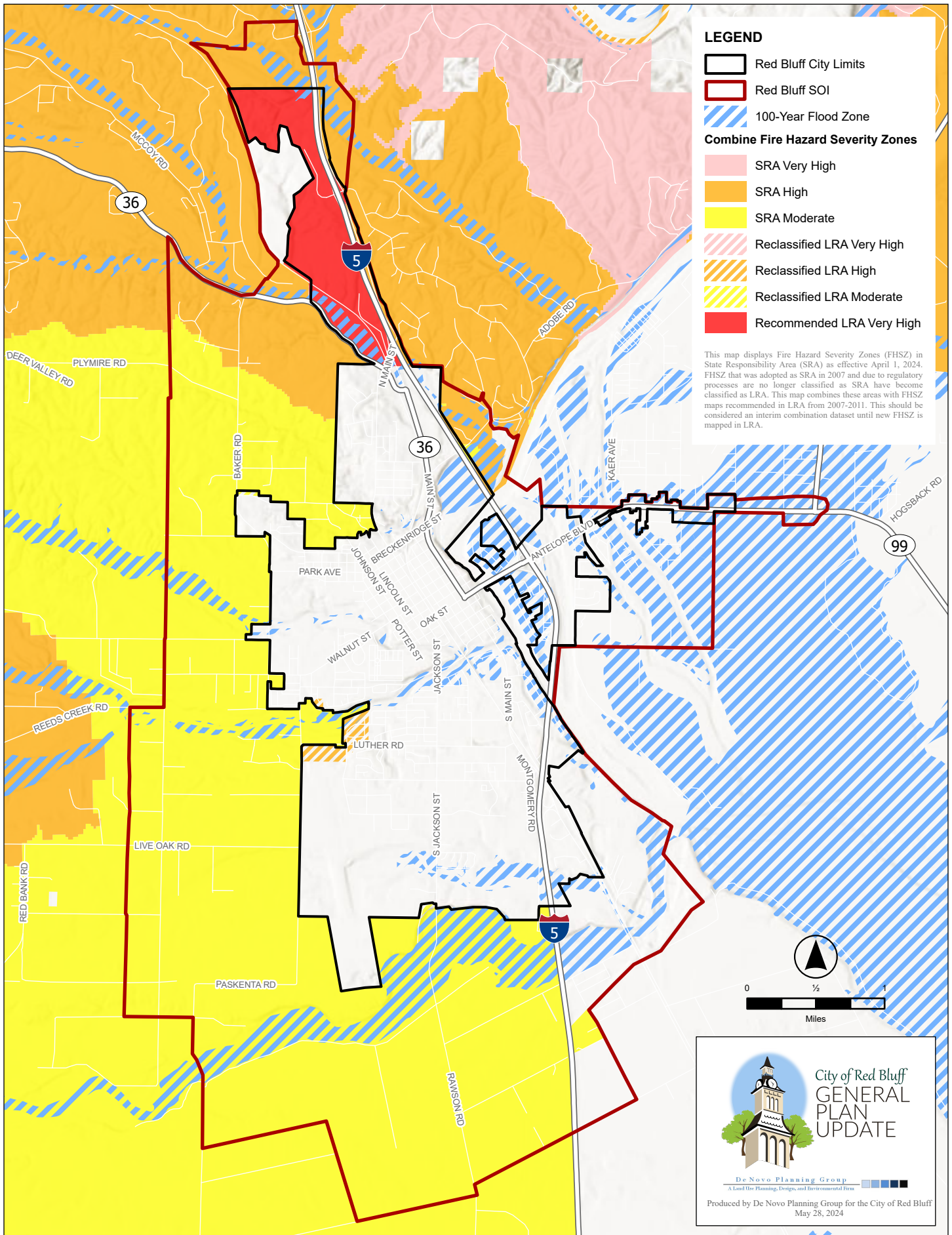
### Unit Strategic Fire Plan Tehama Glenn Unit

The California Department of Forestry and Fire Protection’s (CAL FIRE) Tehama Glenn Unit (TGU) Strategic Fire Plan is to reduce losses and fire suppression costs from wildland fires within the Unit by protecting at risk assets. The Plan is available at: <https://osfm.fire.ca.gov/what-we-do/community-wildfire-preparedness-and-mitigation/pre-fire-planning>.



- SA-9i As part of the development review process, for all new development projects within fire hazard areas, consult with the fire department in order to ensure the project has adequate fire protection including: the ability to service new development, emergency access (ingress, egress), evacuation routes, fire flow, water supply, defensible space pursuant to Public Resources Code Section 4291 and other regulations if applicable, fuel modification, fire-safe measures, and vegetation clearance including for public and private roads. All residential development projects within fire hazard areas shall be evaluated at that time to see if they have at least two emergency evacuation routes.*
- SA-9j As part of the next update to the MJHMP, participate in the update process and ensure that the MJHMP update identifies evacuation routes and their capacity, safety, and viability under a range of emergency scenarios. Improvements should be included on City improvements plans and RTP project lists as appropriate.*
- SA-9k Coordinate with Caltrans to implement vegetation clearance maintenance along State transportation corridors, and work with Fire Safe Councils, Community Organizations, the Tehama County Public Works Department, and other local agencies to address the planning and maintenance of vegetation clearance projects, and private road and public road clearance.*
- SA-9l Implement the policies and actions included Under Goal SA-4 that support the review of projects to maintain adequate and efficient fire protection service levels throughout the community.*

Figure SA-1. Joint Hazards Map



Sources: California Department of Forestry and Fire Protection; FEMA; ArcGIS Map Service; Tehama County GIS; California State Geoportal.



*This page left intentionally blank*